

*Virtual Samples....
anytime,...anywhere !*

.slide

Olympus Soft Imaging Solutions

What is a Virtual Slide ?

Virtual slide is the digital equivalent to real sample slide.

A virtual slide has a large field of view and high resolution.

A virtual slide is always in focus.

A virtual slide lasts forever.

The virtual image is available via the internet, anytime and anywhere.

What is .slide ?

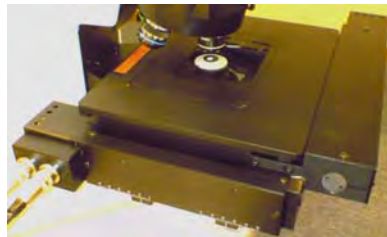
.slide is a fully automatic slide scanner system to produce virtual slides.

.slide is an image gallery of virtual slides.

.slide enables sharing and distribution of virtual slides.

.slide enables online discussions on the virtual slides between multiple parties.

What makes up a .slide system ?



Olympus Soft Imaging Solutions

What are the features ?

Fast scan: Scan speed of ~ 8 Mpix/s. (approx. 10-12 fps).

Optimized image: Real time white balance and color shading correction, exposure correction.

Highly **parallel and simultaneous processing** of tasks.

Real time image compression: Real time compression/decompression of images to reduce data volume.

Fast image navigation: View and navigate around a 100GB image as easily as a 1MB image.

What are the features ?

Seamless stitching: Generates seamlessly stitched frames to form one large image during scanning.

Autofocus.

EFI for **extended focus** during scanning.

Intelligent automatic sample detection.

What are the features ?

Virtual slides accessible from anywhere at any magnification.

Instant web publishing: Instantly publish web browser viewable version of image for LAN/internet access.
(latest version ?)

Conferencing - audio, text and drawing.

Interactive **measurement**.

Image processing.

How big can an image be ?

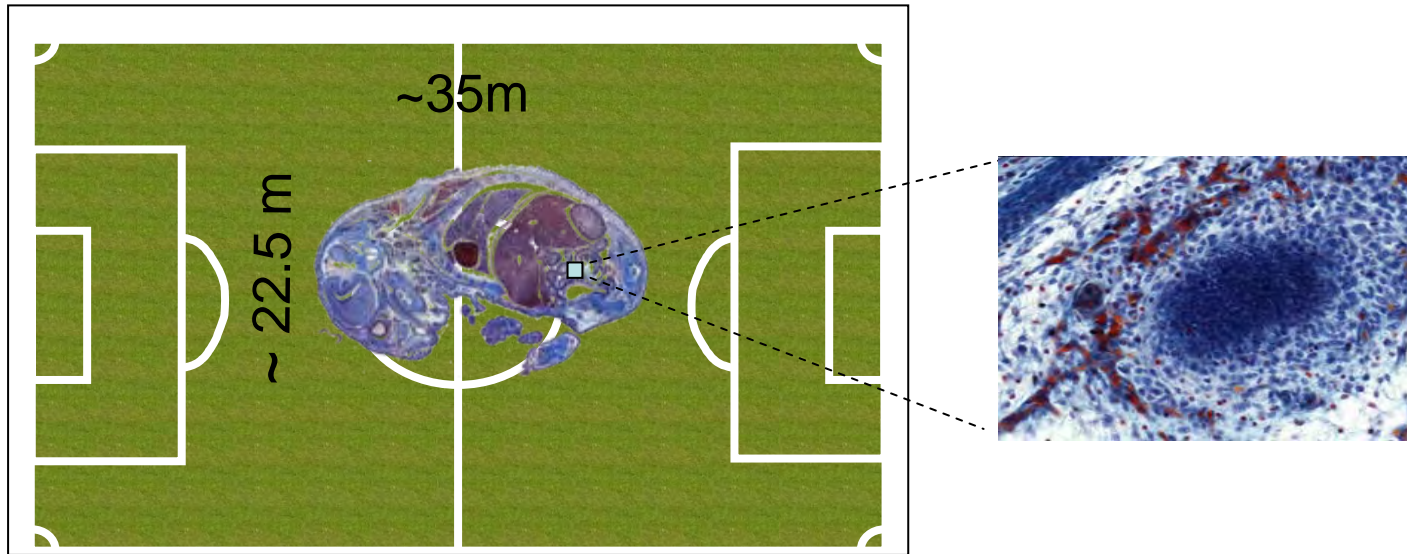


Image was generated by 4,500 single snapshots

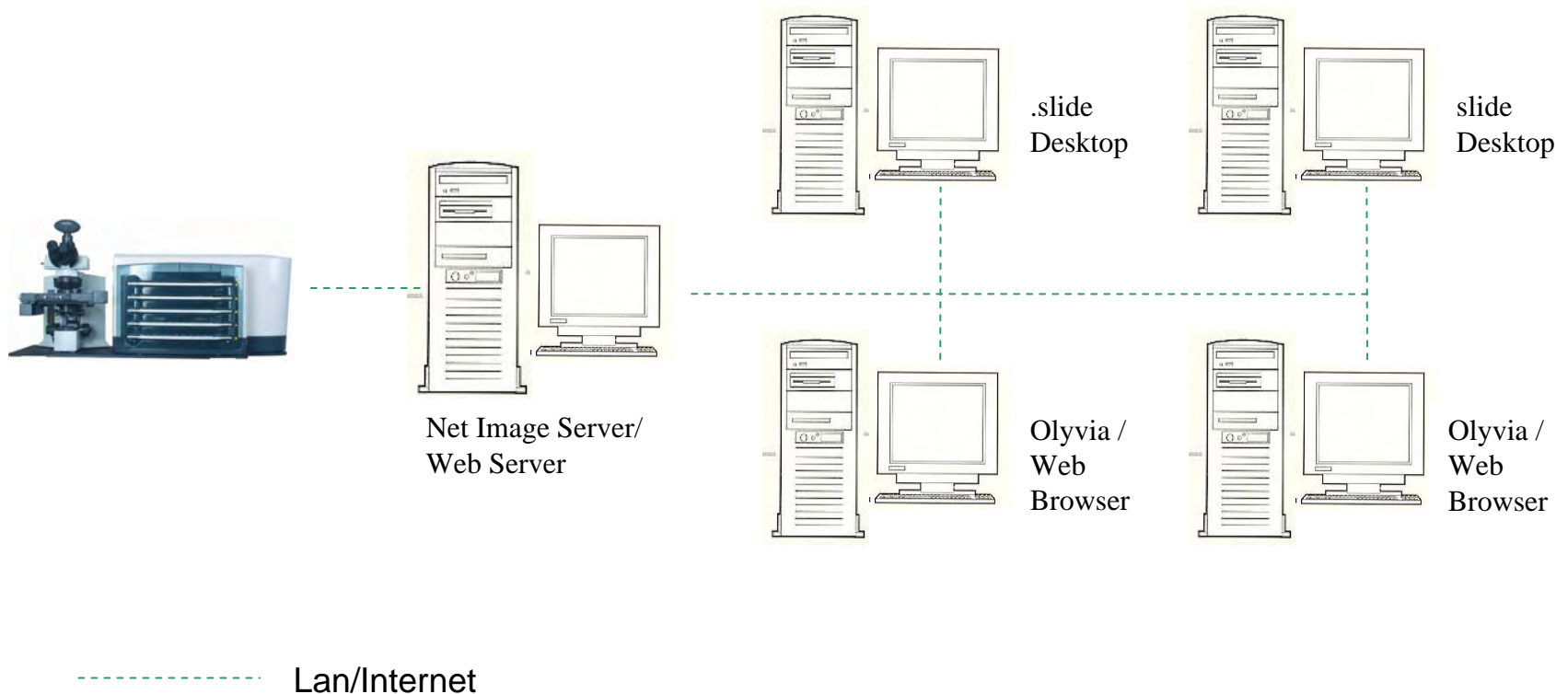
Image size about 124,000 x 76,000 pixels.

This only takes 25 mins to scan with 40x objective.

~ 1 GB compressed image size and 15 GB uncompressed image size.

How to share the virtual slide ?

Net Image Server, Web Server and Olyvia



How do we automate the process ?

SL 50 with Bar Code Reader for 50 slides.

The SL50 is compatible with the common bar types used in clinical and research laboratories in the USA and Europe.

Code 39

Codebar

Code 128

Interleaved 2 of 5



Thank you.