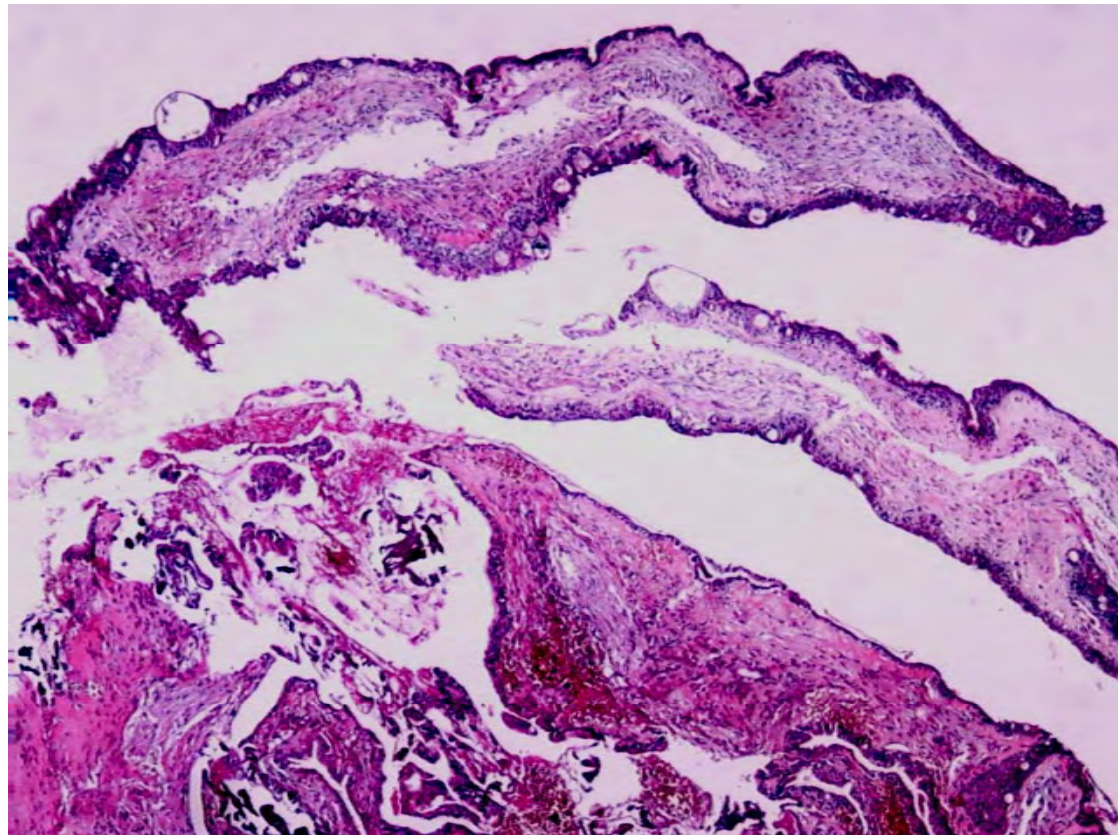


Case 4

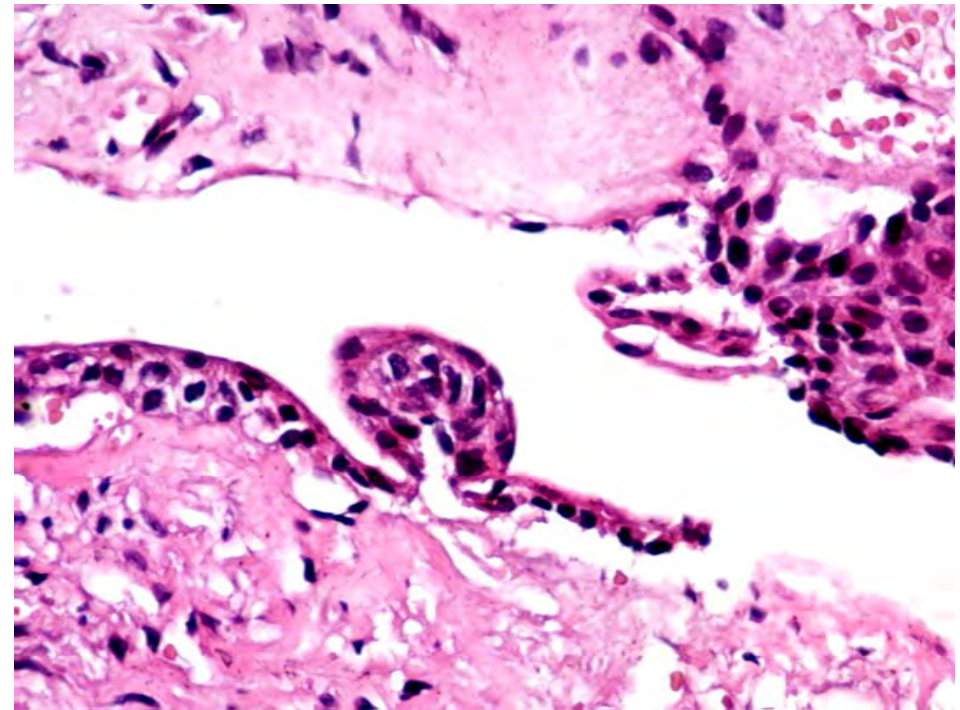
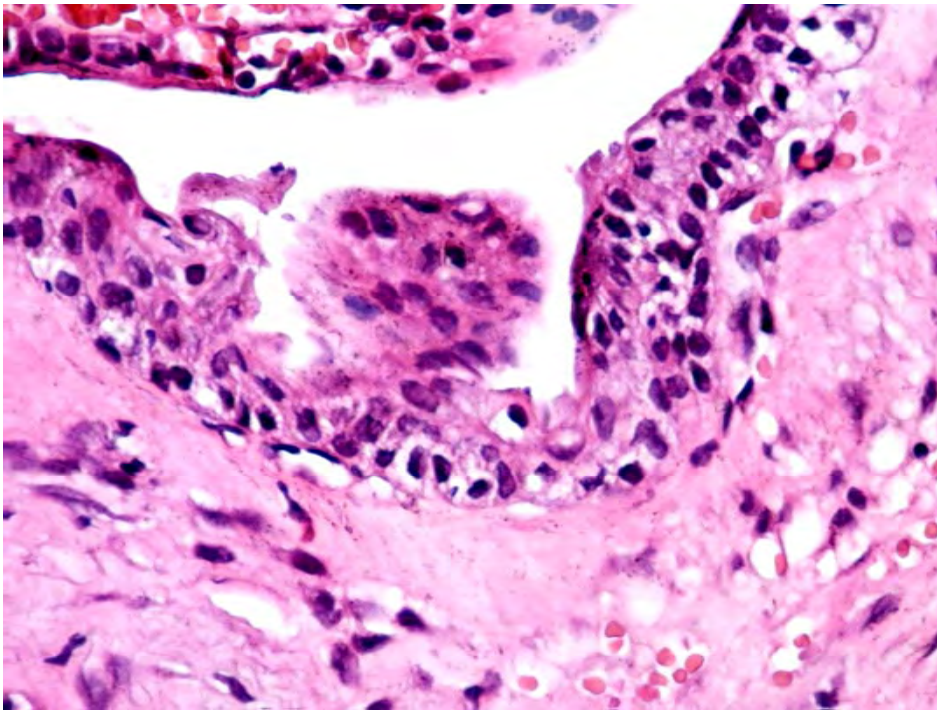
Microscopic Examination– 1

Fibrous wall lined by epithelial lining with intra-epithelial pools containing mucin-like material



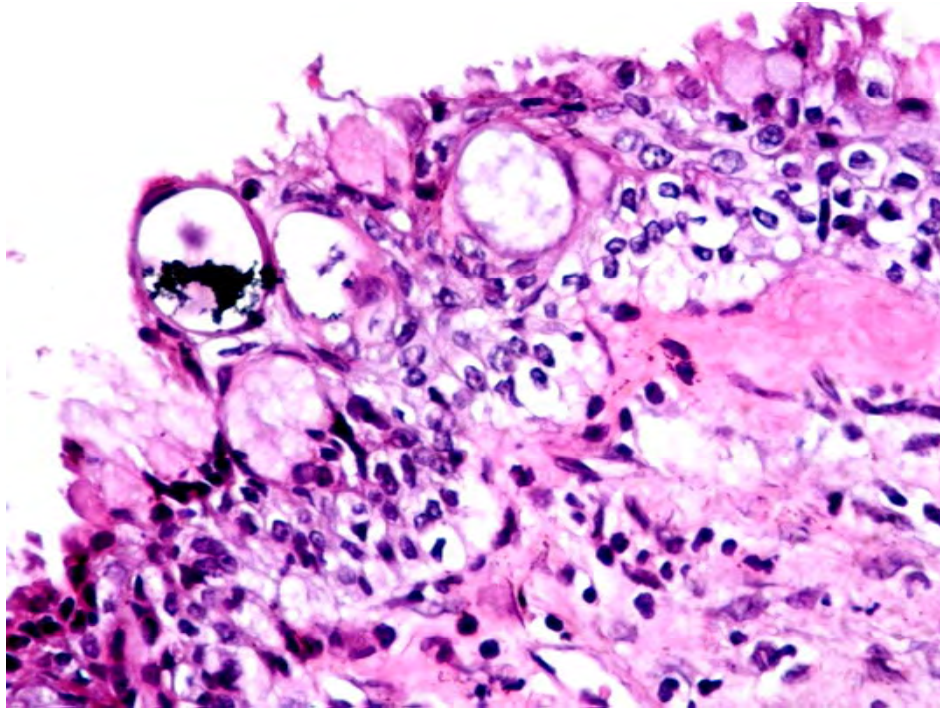
Microscopic Examination– 2

Cuboidal odontogenic epithelial cells with variable thickness and flat epithelium-connective tissue junction, forming small nodules.

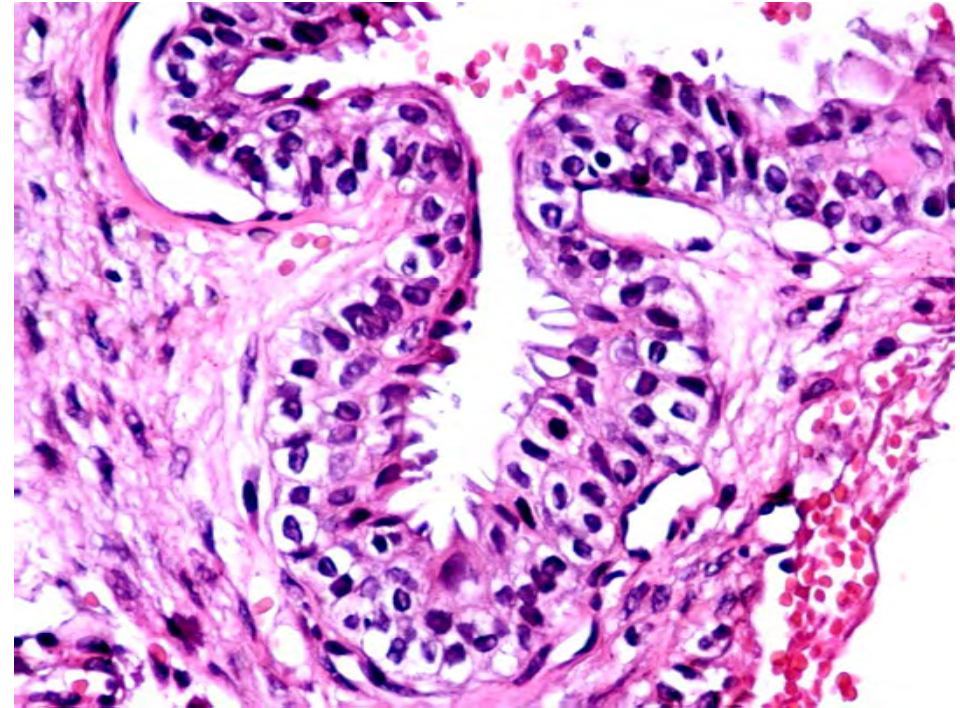


Microscopic Examination– 3

Mucus cells and pools of mucin-like content

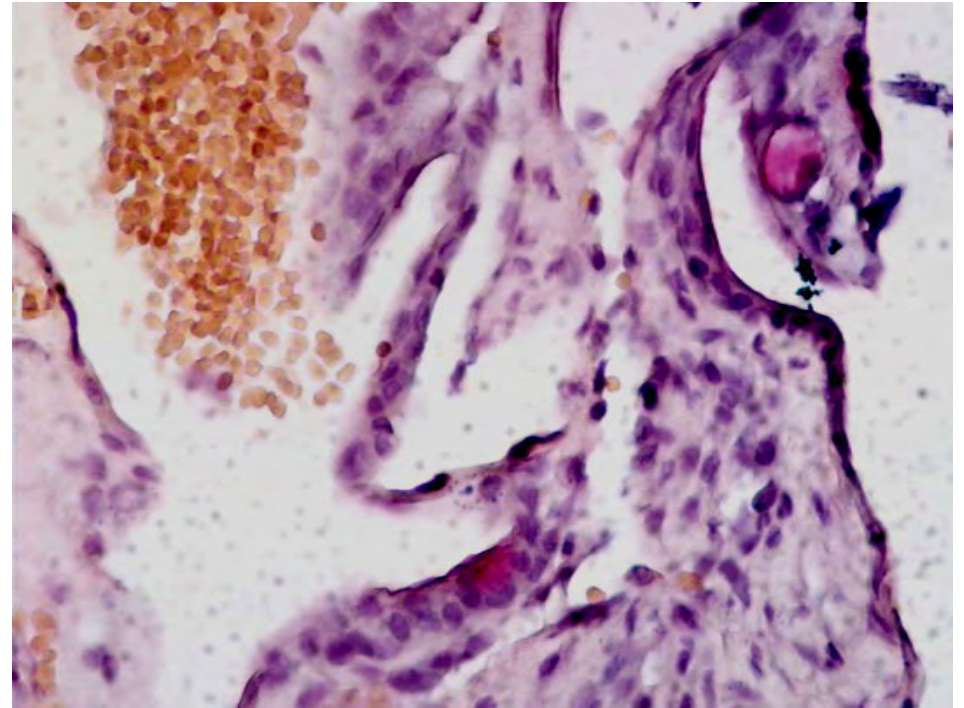
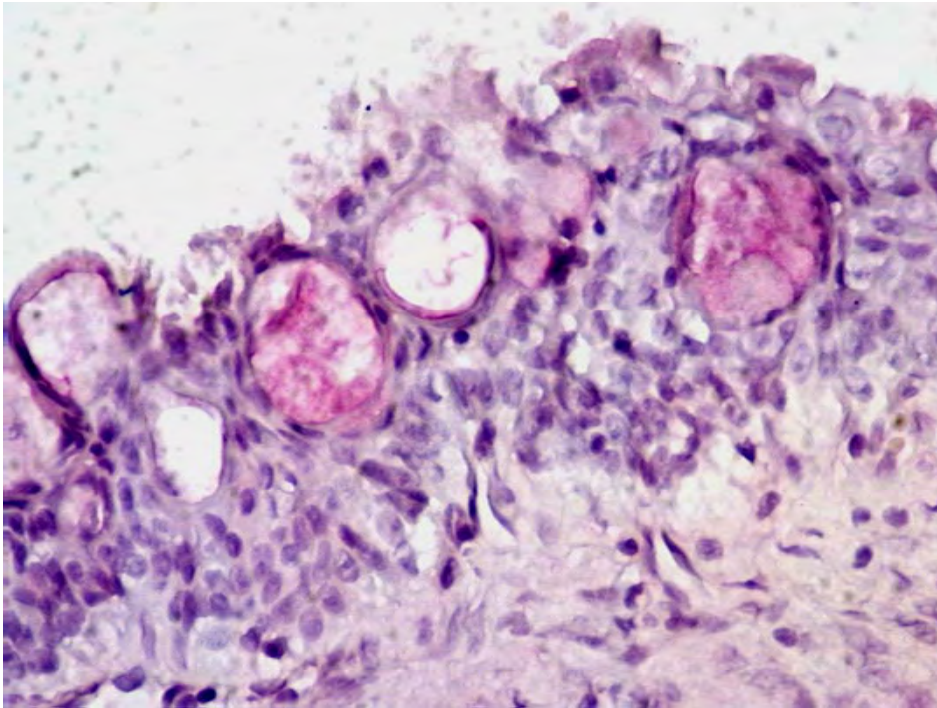


Ciliated surface



Microscopic Examination– 4

Histochemical stain – Mucicarmin(+)



Final Diagnosis

- **Glandular odontogenic cyst**
Bone, Mandible, Apical 43 & 33, Incision