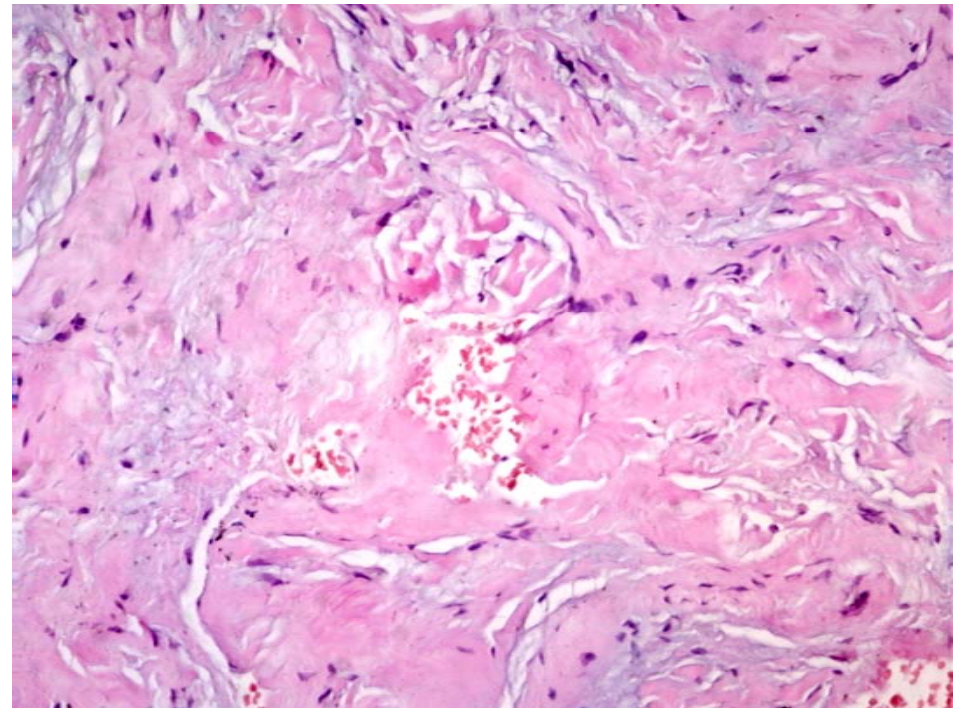
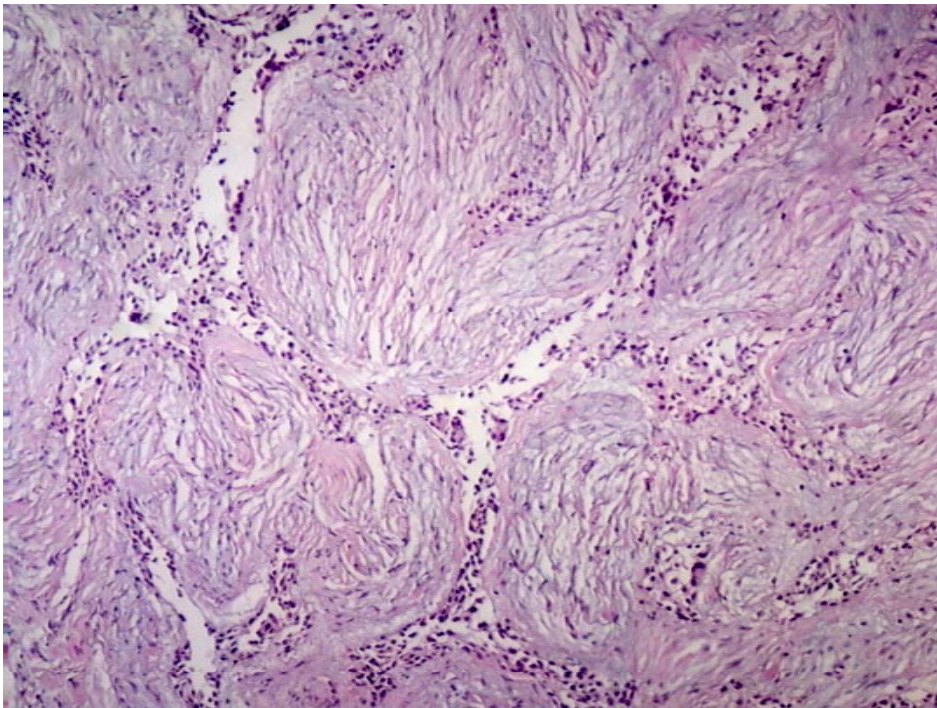


Case 2

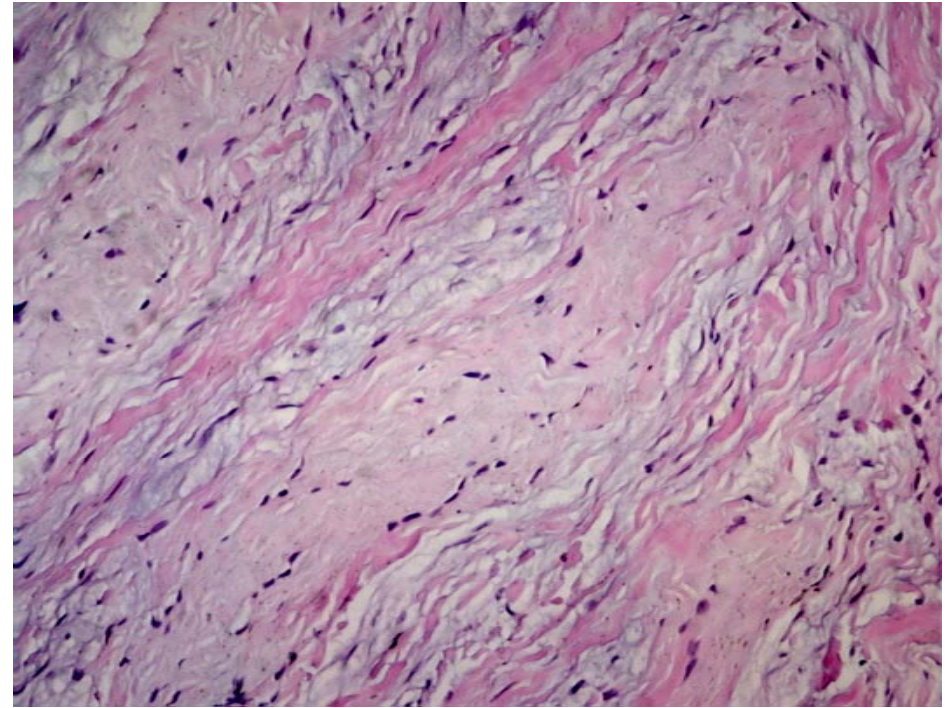
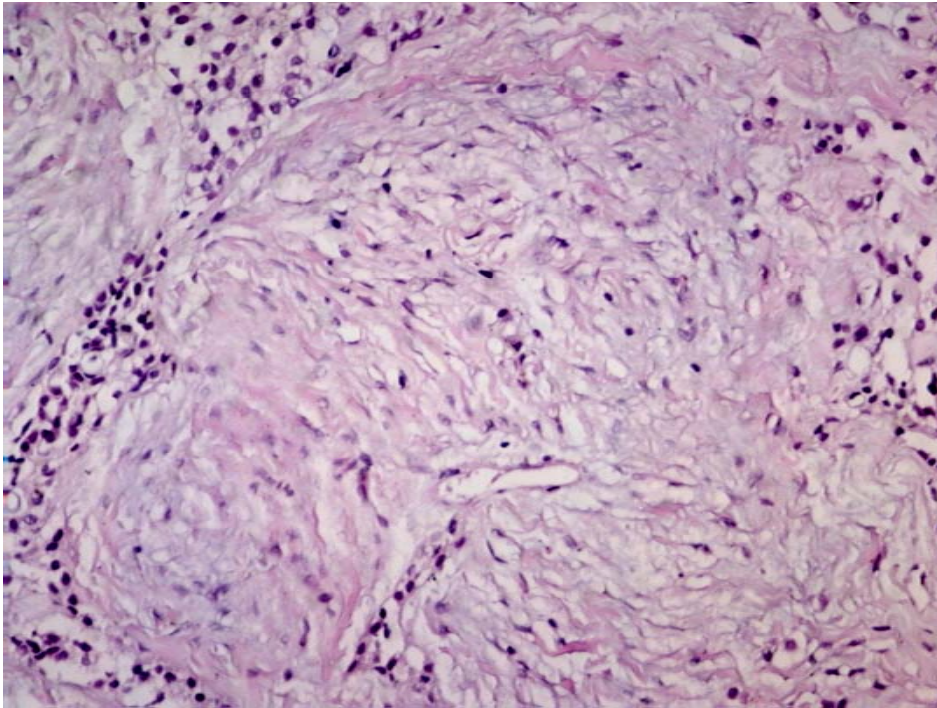
Microscopic Examination– 1

Elongated, spindle-shaped cells arranging in whirled pattern, mixed with dense collagen fibers and fibroblast-like cells.



Microscopic Examination– 2

Axon-like structures consisting of loose, wavy, elongated cells with spindle-shaped nuclei.



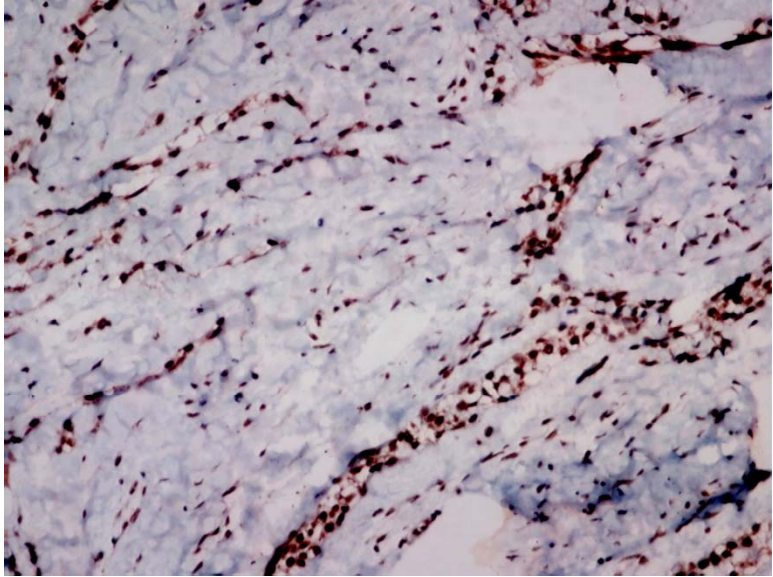
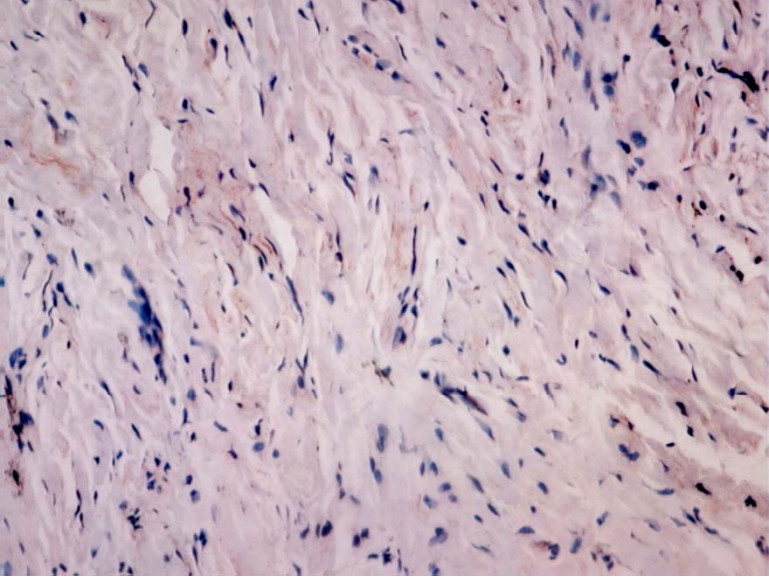
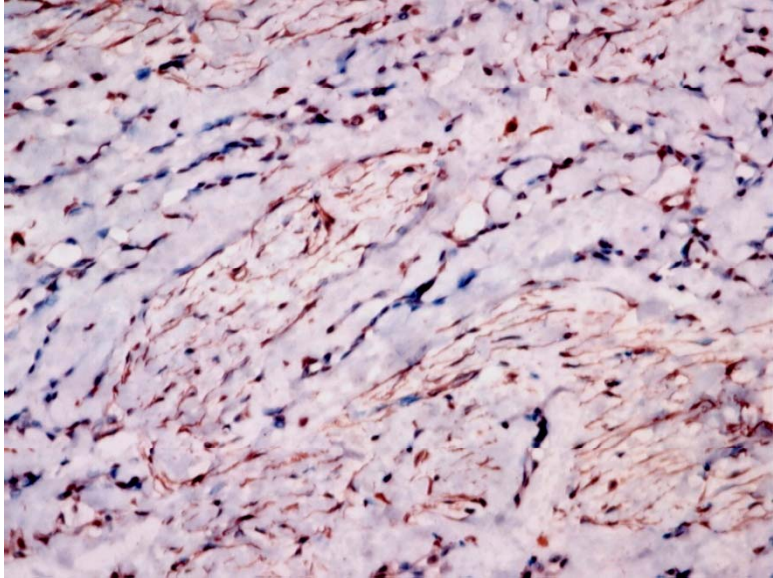
Microscopic Examination– 4

Immunohistochemical stains

Vimentin(+)

NFP(+)

S-100(-)



Final Diagnosis

- **Neurofibroma, central
Bone, Mandible, Anterior and left, Incision**