

原文題目(出處)：	Comparison of digital panoramic radiography versus cone beam computerized tomography for measuring alveolar bone (BioMed Central)
原文作者姓名：	Zunan Tang, Xianchu Liu, Kejia Chen*
通訊作者學校：	Central South University, China
報告者姓名(組別)：	江依芸(K)
報告日期：	2017/06/08

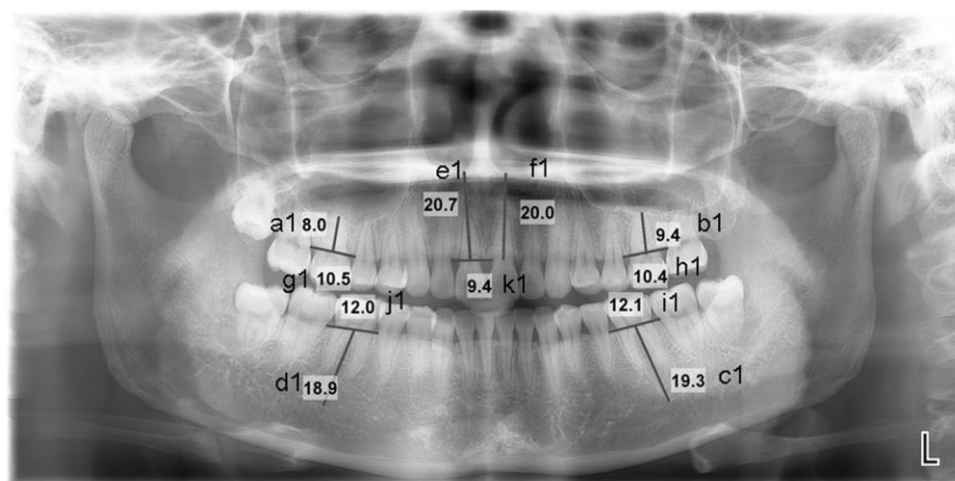
內文：

Background

- The local hospitals usually don't have access to CBCT due to the cost
- The doctors in local hospitals have to make reasonable dental planting using orthopantomography (OPG)
- Determine the magnification rate of OPG to obtain correct diagnosis

Methods

- 86 patients were scanned by CBCT and OPG
- measure
 1. The vertical distance between the alveolar ridge crest of the maxillary first molar and the sinus bottom of the upper jaw
 2. The distance between the alveolar ridge crest of the mandibular first molars and the top of nerviduct in the mandibular alveolar
 3. The distance between the alveolar ridge crest of the maxillary central incisors and the bottoms of the nasal cavities



- The distances between CBCT and OPG were compared using paired t-test

Results

- The mean vertical magnification rates were 5.55% and 4.84% for the central incisors in the upper right and left jaws respectively
- The mean horizontal magnification rates were 6.53% and 7.47% for the central incisors

in the upper right and left jaws respectively

- the mean vertical magnification rates were 11.38% and 12.95% vertically and 8.55% and 9.43% horizontally for the first molars

Conclusion

The magnification rates of OPG at these teeth are different. The distances measured by OPG were highly correlated with that measured by CBCT.

題號	題目
1	<p>According to this article, which distance is not measured when comparing CBCT and OPG ?</p> <p>(A) The distance between the alveolar ridge crest of the maxillary first molar and the sinus bottom of the upper jaw</p> <p>(B) The distance between the alveolar ridge crest of the mandibular first molars and the top of nerviduct in the mandibular alveolar</p> <p>(C) The distance between the alveolar ridge crest of the maxillary central incisors and the bottoms of the nasal cavities</p> <p>(D) The faciolingual thickness of bone plate</p>
答案 (D)	<p>出處：OPG as two-dimensional imaging is not able to provide information regarding the thickness</p>
題號	題目
2	<p>Which kind of patients are not suggested to implant based on OPG Alone?</p> <p>(A) Patients with caries</p> <p>(B) Patients with periodontal disease</p> <p>(C) Patients with temporalmandibular disease</p> <p>(D) Patients with psychological disease</p>
答案 (B)	<p>出處：To lower the risks, patients with moderate or severe periodontal diseases are not suggested to implant based on OPG alone.</p>