

NO. 071 Dermoid cyst

<ul style="list-style-type: none"> ➤ Cyst 的三個要件 : cystic wall、lumen / cavity、lining epithelium ➤ Cyst wall 上有皮膚衍生物 (skin appendage) : hair follicle、sweat gland、sebaceous gland、這些可與 070 Epidermoid cyst 做區別。 ➤ 在 cystic wall 上有特別處，為有 smooth muscle。這些肌肉沒有橫紋，所以非骨骼肌，此部份也非正常的部分。 ➤ Lining epithelium 是 stratified squamous epithelium (orthokeratinized)。 	<p>標記重點：</p> <ol style="list-style-type: none"> 1. Cyst 三要素：cystic wall (Fig. 1 green ↑)、lumen / cavity (Fig. 1 yellow ↑)、lining epithelium (Fig. 1 blue ↑) 2. Orthokeratinized Keratinized stratified squamous epithelium (Fig. 1 blue ↑) 3. Smooth muscle (Fig. 2 blue ↑) 4. Infiltration of inflammatory cell (Fig. 2 yellow ↑) 5. Skin appendage：sweat gland (Fig. 2 green ↑)、sebaceous gland (Fig. 1&2 red ↑)
---	---

Fig. 1

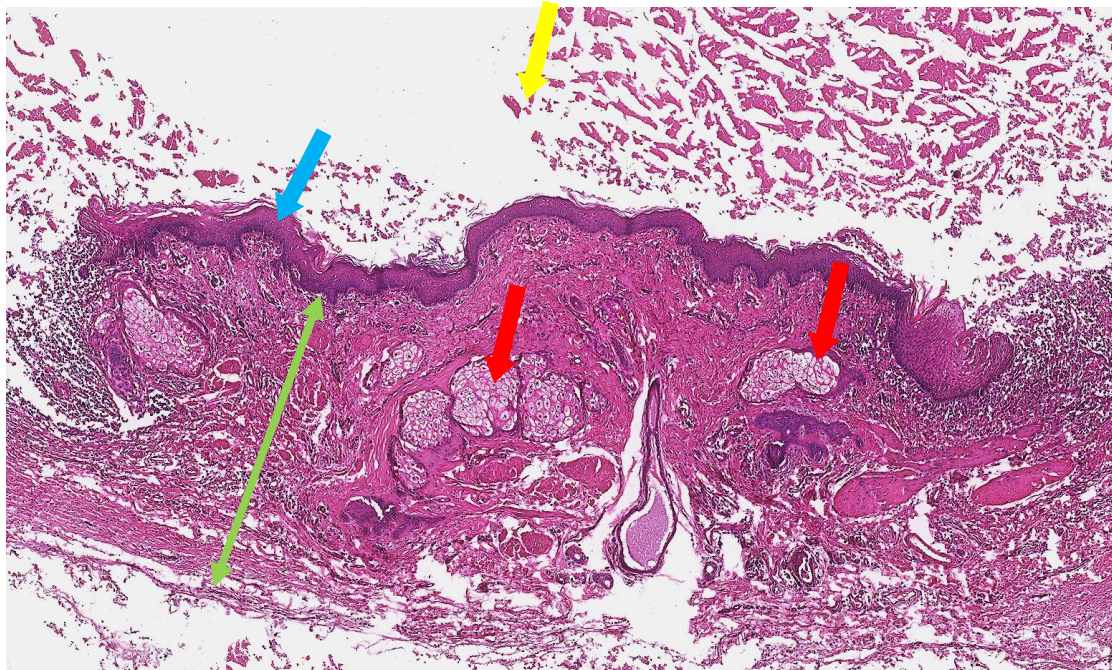


Fig. 2

