

## NO. 065 Nasopalatine duct cyst

<ul style="list-style-type: none"><li>➤ Cyst 的三個要件：cystic wall、lumen / cavity、lining epithelium</li><li>➤ Lining epithelium 包含 low-cuboidal cells (Fig. 2), stratified squamous epithelium (Fig. 3)與 pseudostratified columnar epithelium (Fig. 1)·有些地方還看到纖毛 ( ciliated )</li><li>➤ Cystic fibrous wall 中可見 moderate-sized nerves and small muscular arteries and veins</li></ul>	<p>標記重點：</p> <ol style="list-style-type: none"><li>1. Cyst 三要素：cystic wall、lumen / cavity、lining epithelium</li><li>2. Pseudostratified columnar epithelium (Fig. 3)(ciliated) (Fig. 1 blue ↑)</li><li>3. Goblet cells (Fig. 1 yellow ↑)</li><li>4. Moderate-sized nerves (Fig. 4 green ↑) and small muscular arteries and veins (Fig. 4 yellow ↑)</li></ol>
---	--

Fig. 1

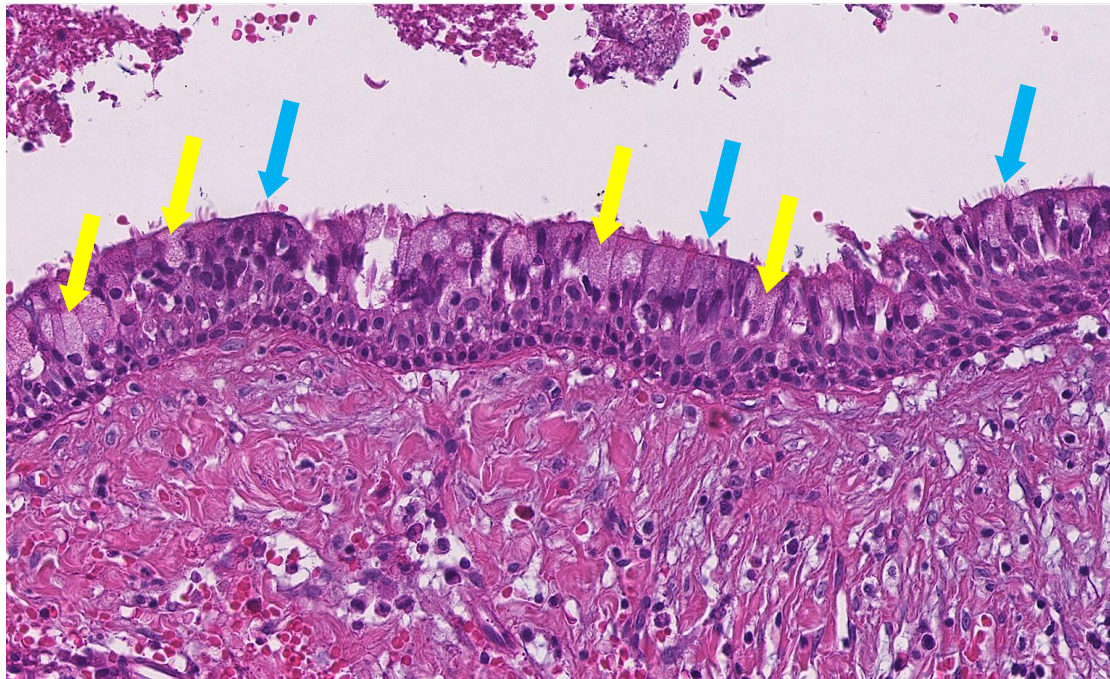


Fig. 2

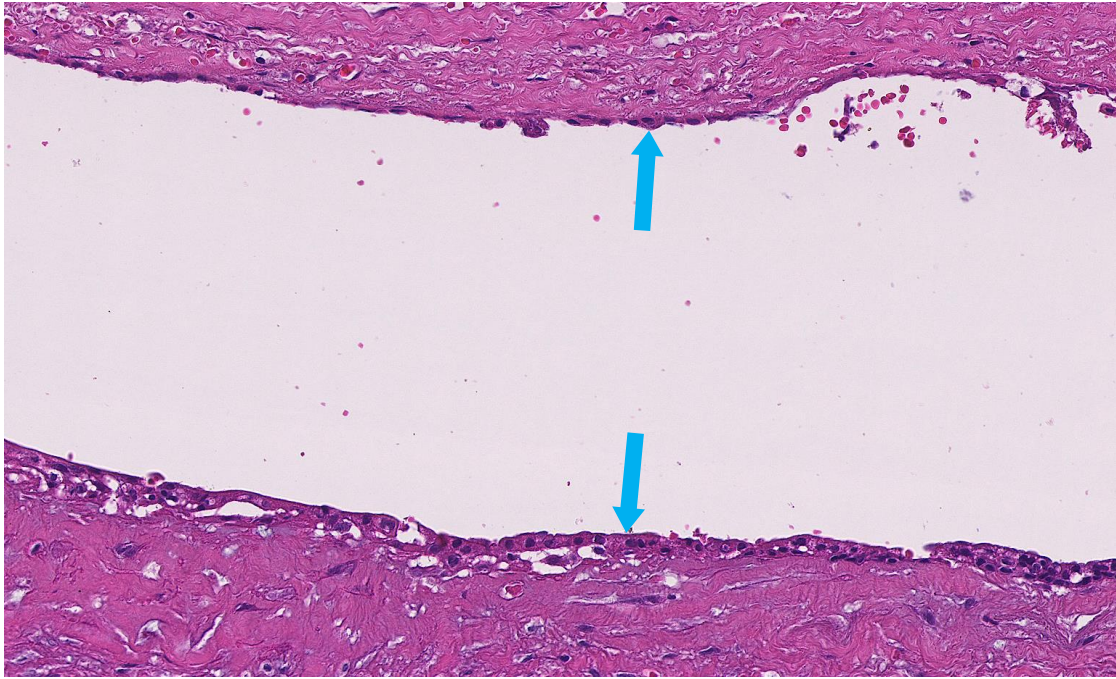


Fig. 3

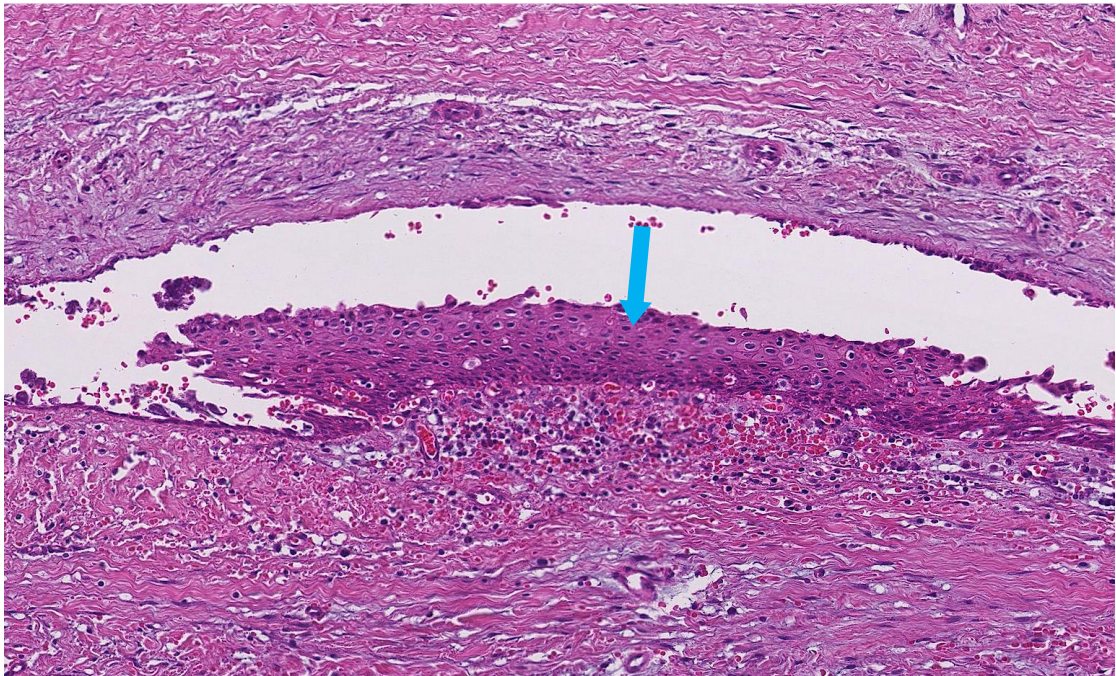


Fig. 4

