

NO. 064 Glandular odontogenic cyst

<p>➤ Cyst 必備三個要件</p> <ul style="list-style-type: none"> ■ cavity / lumen ■ cystic wall (為 Fibrous tissue) ■ lining epithelium <p>➤ Glandular odontogenic cyst 有 10 大特徵:</p> <ul style="list-style-type: none"> - Eosinophilic cuboidal cells - Microcysts - Apocrine snouting - Clear (vacuolated) cells - Variable thickness - Tufting (papillary projections) - Mucous cells - Epithelial spheres - Multiple compartments - Cilia <p>若有達 7 個或更多特徵，則有極高的機會為 GOC。若只有 5 個以下，則非 GOC 的機會較高。 本片符合 7 個特徵</p>	<p>標記重點：</p> <ol style="list-style-type: none"> 1. Cyst 三要素： <ul style="list-style-type: none"> 甲、Cystic wall (fibrous tissue) 乙、Lumen / cavity 丙、Lining epithelium 2. Apocrine snouting (Fig. 1 red ↑) 3. Clear (vacuolated) cells (Fig. 1&4 yellow ↑) 4. Variable thickness (Fig. 2 yellow ↑) 5. Tufting (papillary projections) (Fig. 4 red ↑) 6. Mucous cells (Fig. 1&2 green ↑) 7. Cilia (Fig. 1&4 blue ↑) 8. Microcyst (Fig. 3 yellow ↑)
--	--

Fig. 1

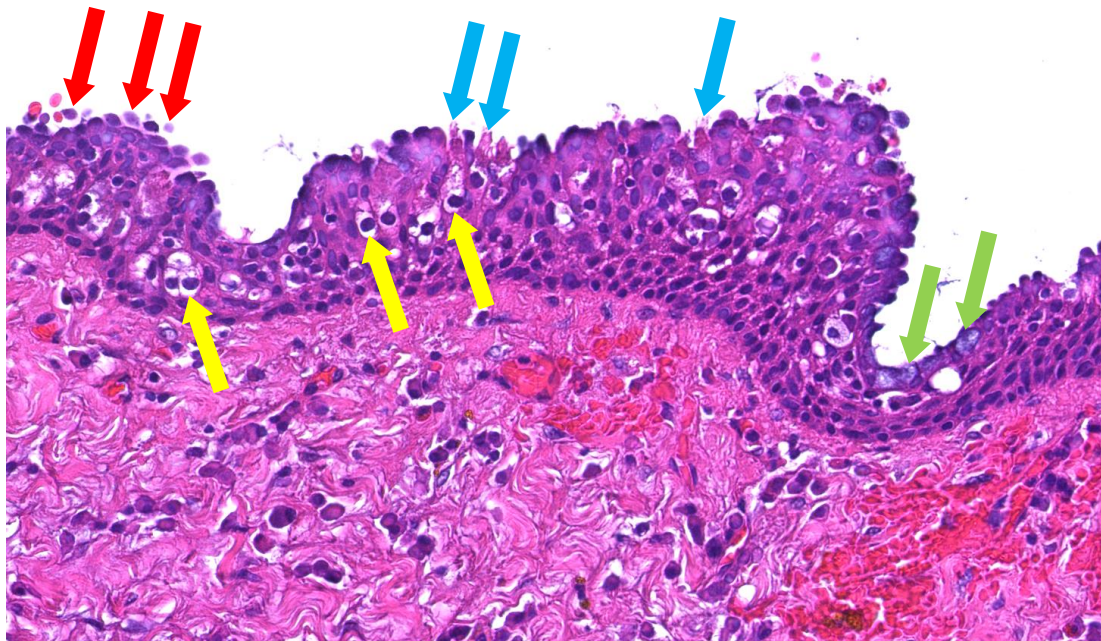


Fig. 2

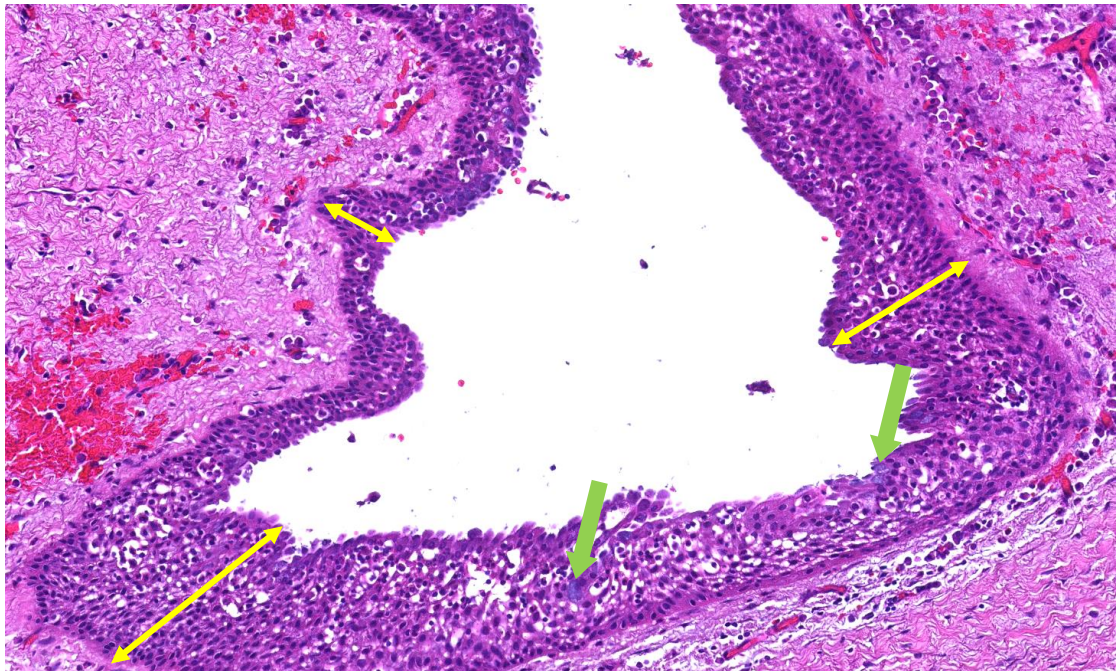


Fig. 3

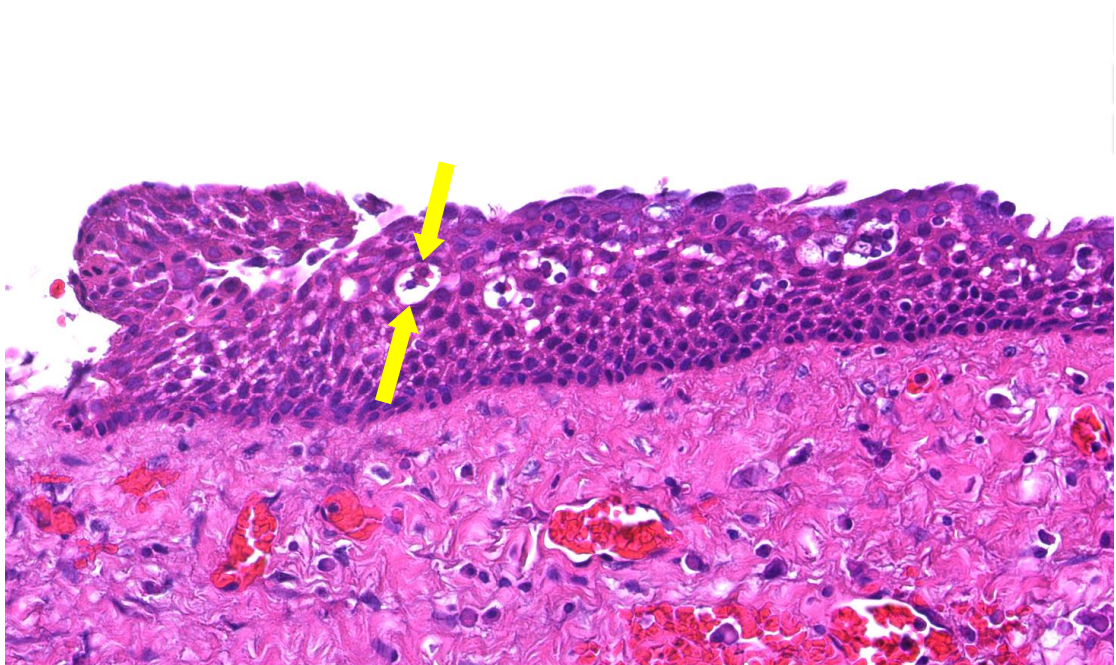


Fig. 4

