

NO. 063 Gorlin cyst with odontoma (type 1b)

| | |
|--|---|
| <ul style="list-style-type: none">➤ Cyst 的三個要件：cystic wall、lumen / cavity、lining epithelium➤ Lining epithelium 大多由 nonkeratinized stratified squamous epithelium (Fig. 1 blue ↑) 組成。也有部分有 ameloblastoma-like features (Fig. 3)➤ 一樣有 ghost cell 及 osteodentin➤ 不同的是，可見到 tubular dentin，毛狀部份是 enamel matrix 的部份 (odontoma：dentin + enamel matrix)➤ 因為有 odontoma combined 一起，故本片為 Gorlin cyst type 1b | <p>標記重點：</p> <ol style="list-style-type: none">1. Cyst 三要件：cystic wall (Fig. 1 green ↑)、lumen / cavity (Fig. 1 yellow ↑)、lining epithelium (Fig. 1 blue ↑)2. Osteodentin (Fig. 1&2 black ↑)3. Ghost cell (Fig. 1 red ↑)4. Enamel matrix (Fig. 2 yellow ↑)5. Dentin with dentinal tubule (Fig. 2 blue ↑) |
|--|---|

Fig. 1

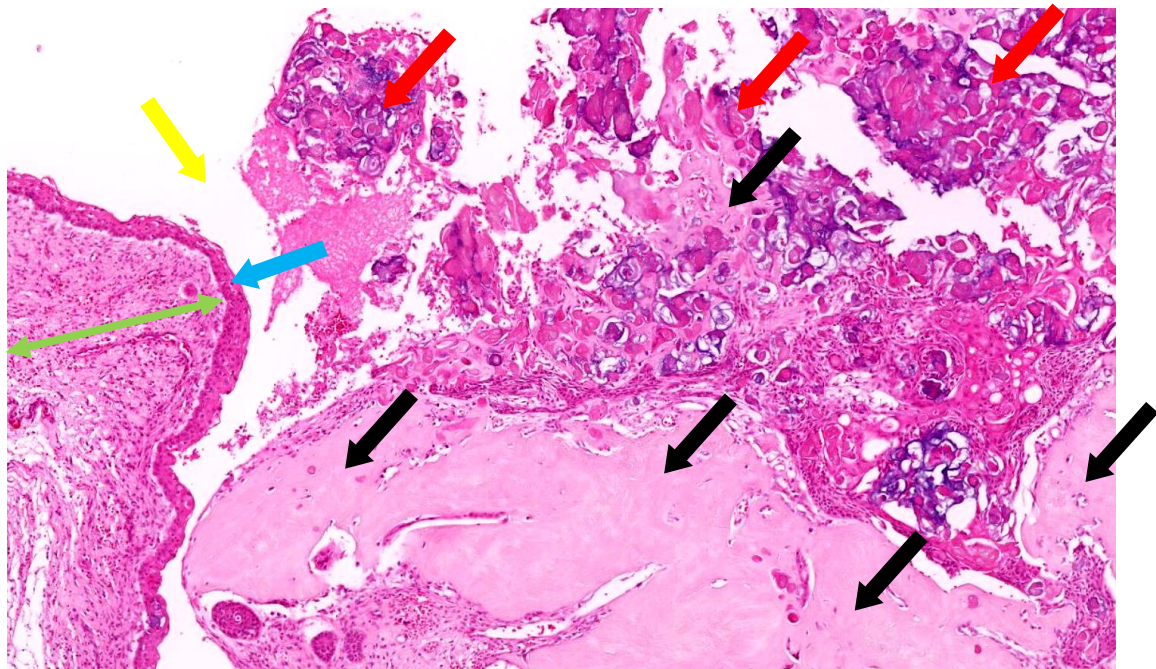


Fig. 2

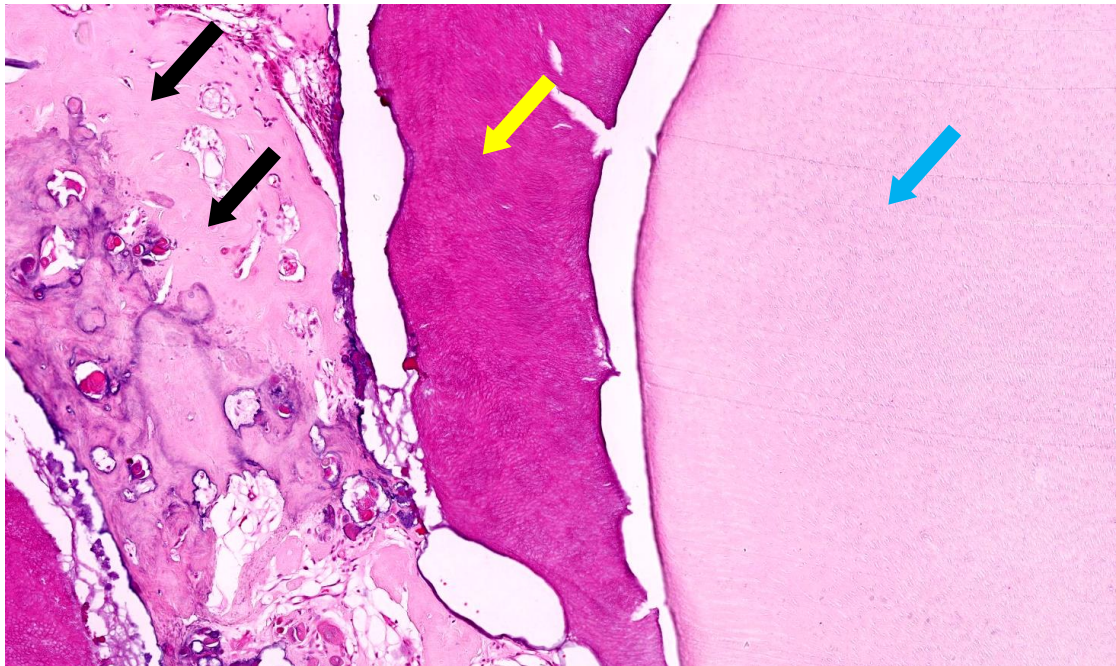


Fig. 3

