

NO. 062 Calcifying odontogenic cyst (Gorlin cyst)

<p>➤ Gorlin cyst type 1 可分三種類型：</p> <ul style="list-style-type: none"> ■ type 1a : simple type ■ type 1b: 有 odontoma combined ■ type 1c : lining epithelium 像是 ameloblastoma <p>062 屬 type 1c · 而 063 屬 type 1b</p> <p>➤ 一樣要畫出 cyst 的三個要件：cystic wall · lumen / cavity · lining epithelium</p> <p>➤ 在 lumen 或是 lining epithelium 附近可見粉紅色圓形的 ghost cell · ghost cell 久了會鈣化成紫色 · ghost cell 看不到細胞核 · 另外常有些 ghost cell 會混在 osteodentin 中 (Fig. 5)</p>	<p>標記重點：</p> <ol style="list-style-type: none"> 1. Cyst 三要件：cystic wall (Fig. 1 green ↑) · lumen / cavity (Fig. 1 yellow ↑) · lining epithelium (Fig. 1 blue ↑) 2. Ameloblast-like cell (Fig. 2&3 blue ↑) 3. Stellate reticulum-like cells (Fig. 2&3 green ↑) 4. Island of odontogenic epithelium (Fig. 4 blue ↑) 5. Osteodentin (Fig. 4&5 yellow ↑) 6. Ghost cells (Fig. 1-5 red ↑)
---	--

Fig. 1

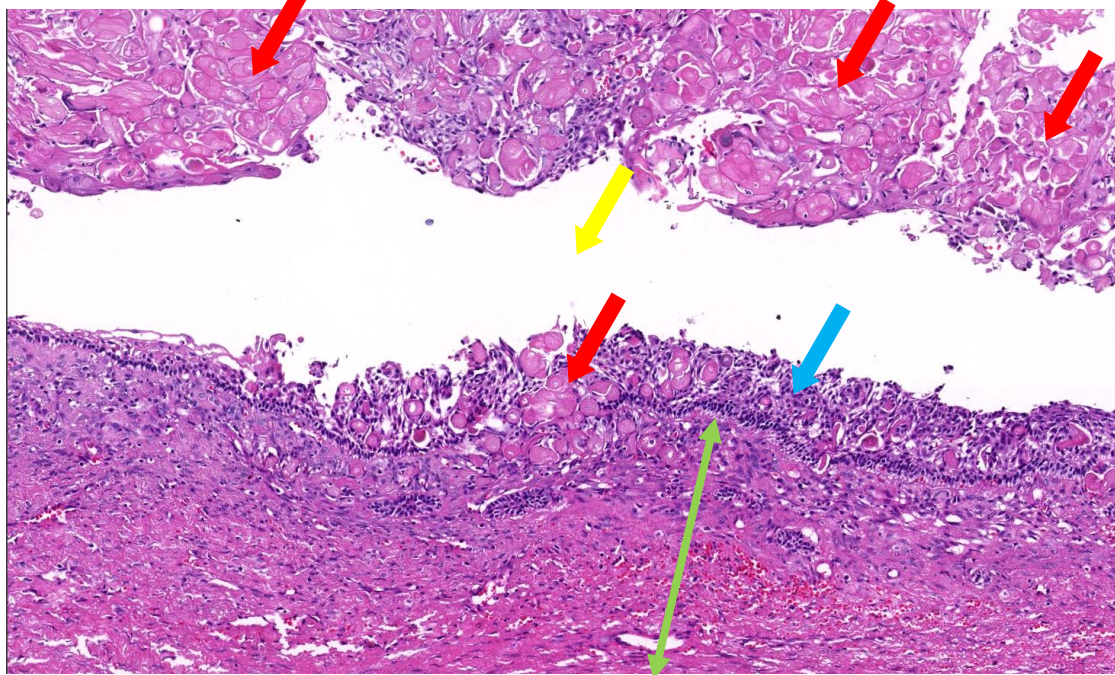


Fig.2

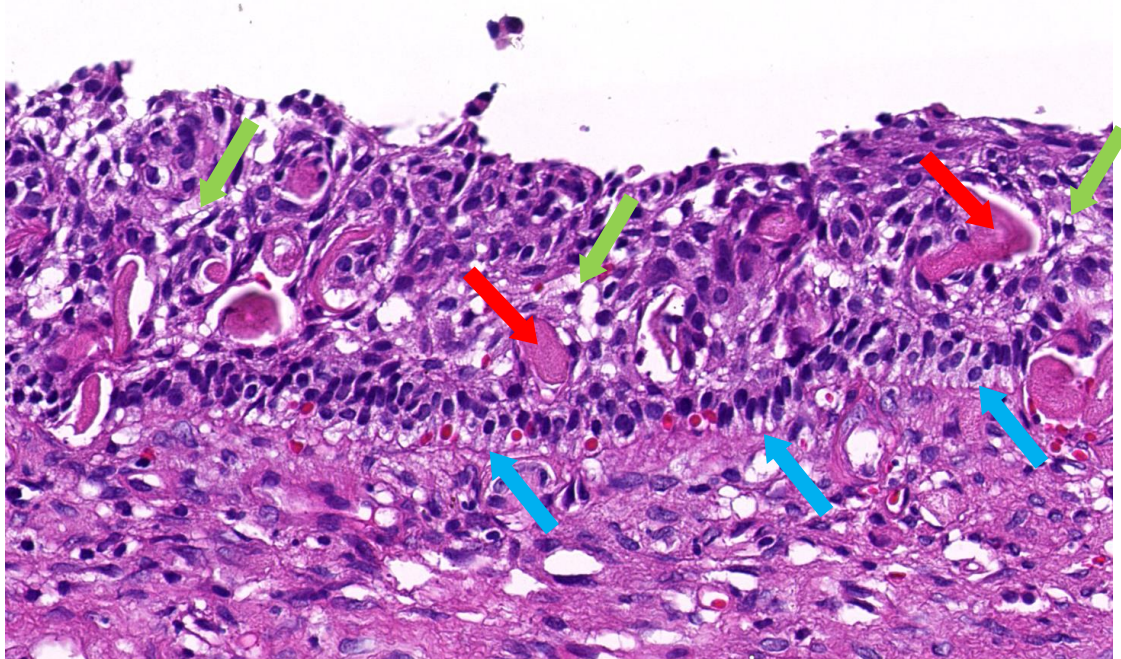


Fig. 3

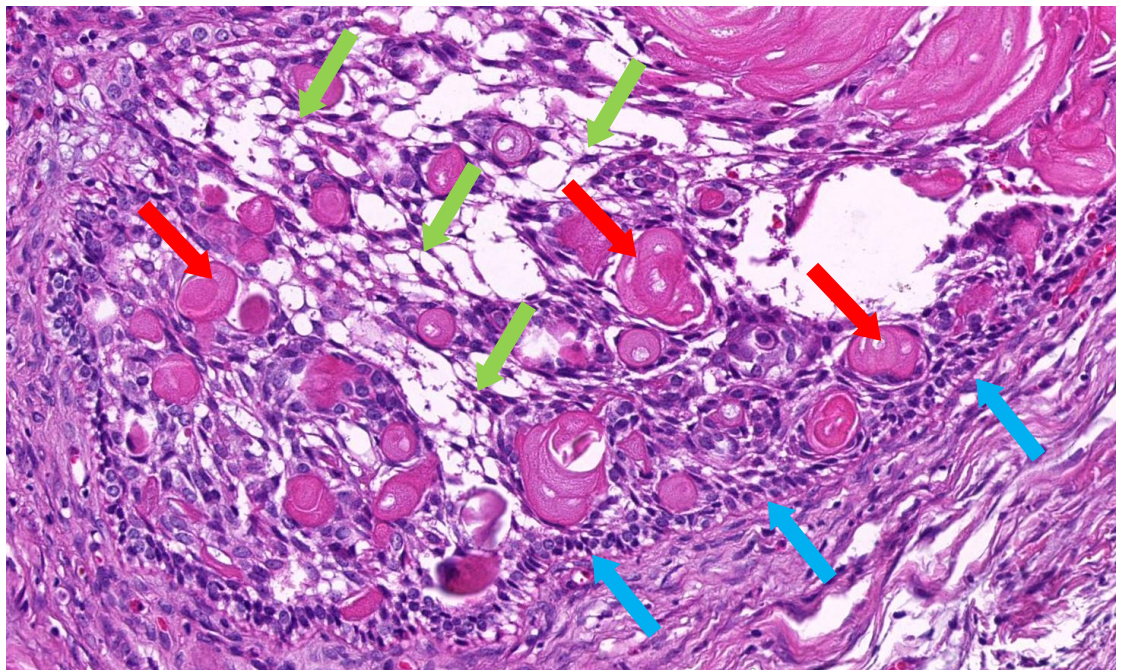


Fig. 4

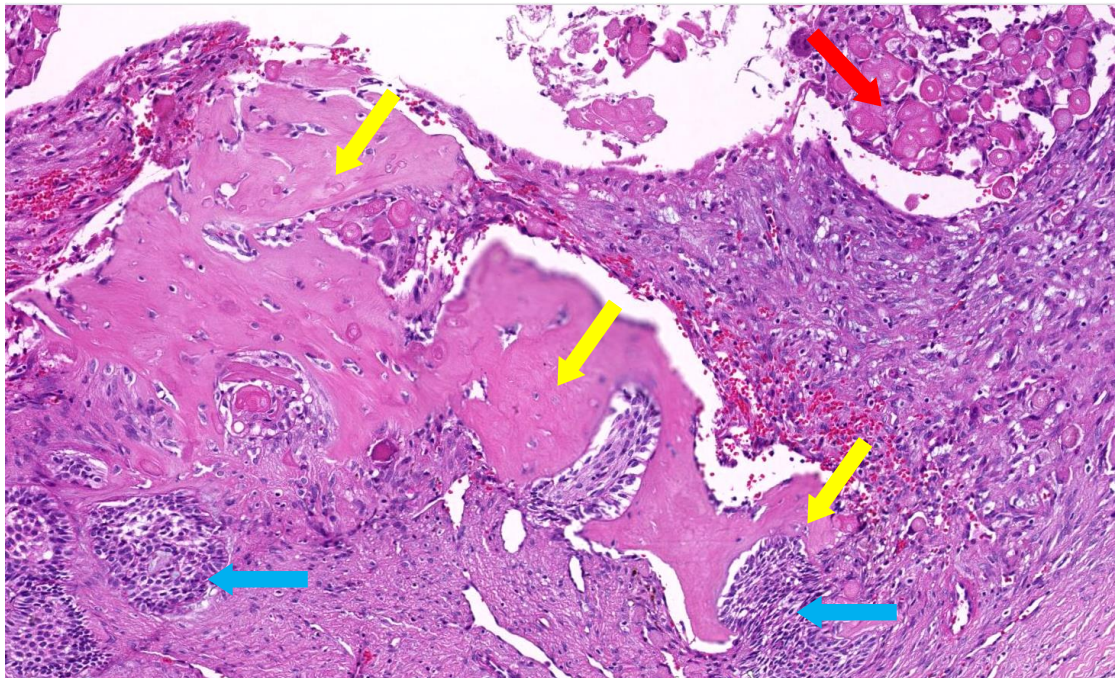


Fig. 5

