

NO. 061 SCC ex orthokeratinized odontogenic cyst

<ul style="list-style-type: none"> ➤ 此 case 是由 mandible 中取出，低倍下可見部分 cystic structure 與增生的上皮 ➤ Cyst 的三個要件：cystic wall、lumen / cavity、lining epithelium ➤ Cystic wall 可見很多的 inflammatory cells (Fig. 3 green ↑) ➤ Lining epithelium 是 stratified squamous epithelium，有些部分呈現 hyperplasia，上皮厚度增厚 (acanthosis) 並有 blunt rete ridges (Fig. 2 blue ↑) ➤ Lining epithelium 有部分變成 SCC，往 fibrous wall 增生、侵犯，可以看到細胞呈現：pleomorphism、hyperchromatism、N/C ratio 增加、abnormal mitosis、dyskeratosis 	<p>標記重點：</p> <ol style="list-style-type: none"> 1. Cyst 三要件：cystic wall (Fig. 1&2 green ↑)、lumen / cavity (Fig. 1&2 yellow ↑)、lining epithelium (Fig. 1&2 blue ↑) 2. Orthokeratinized stratified squamous epithelium (Fig. 1&2 red ↑) 3. Acanthosis (Fig. 2 blue ↑) 4. Keratin pearl (Fig. 3 blue ↑) 5. Tumor island： <ul style="list-style-type: none"> - pleomorphism (Fig. 4&5) - hyperchromatism (Fig. 5 yellow ↑) - N/C ratio 增加 (Fig. 5 yellow ↑) - abnormal mitosis (Fig. 4&5. blue ↑) - dyskeratosis (Fig. 4&5 red ↑)
---	--

Fig. 1

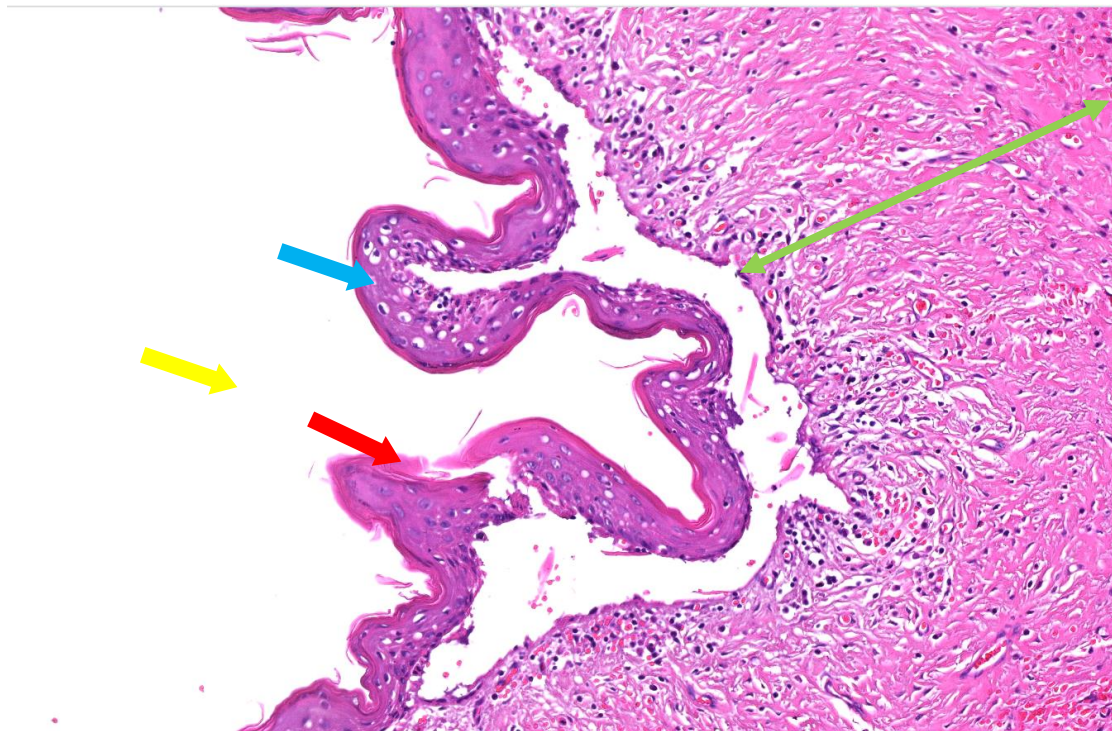


Fig. 2

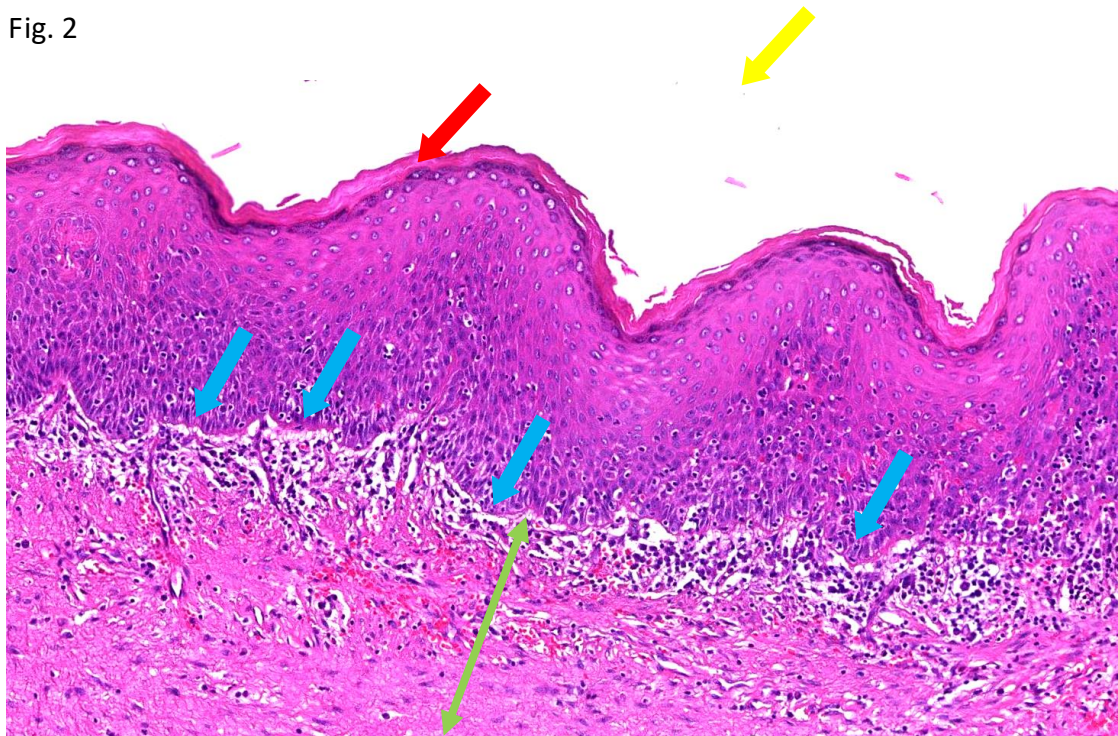


Fig. 3

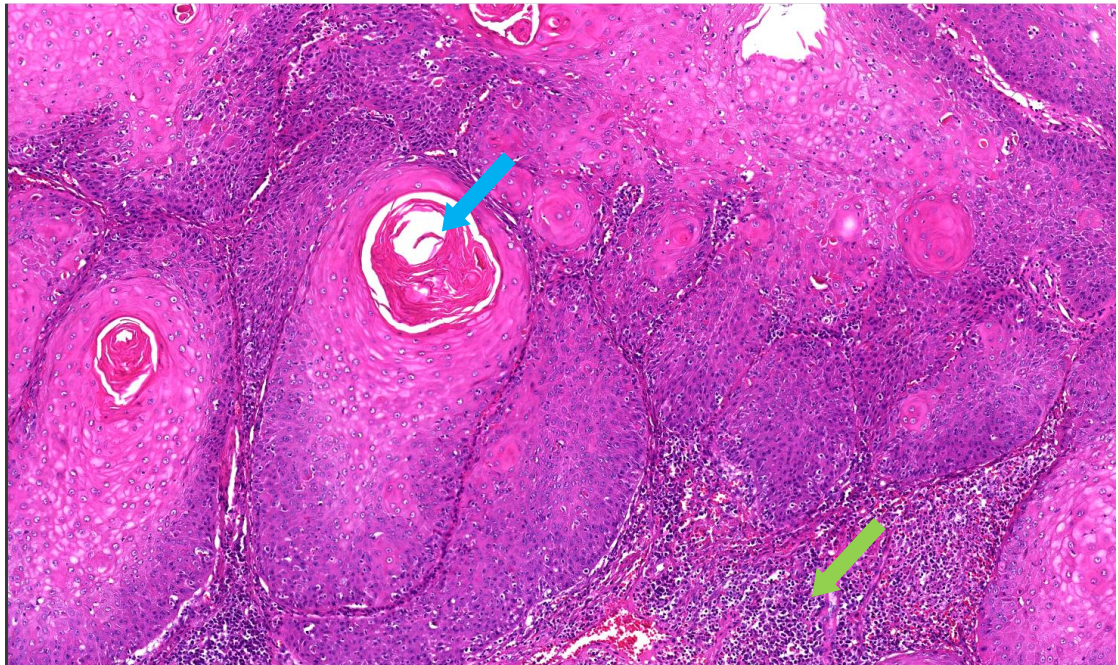


Fig. 4

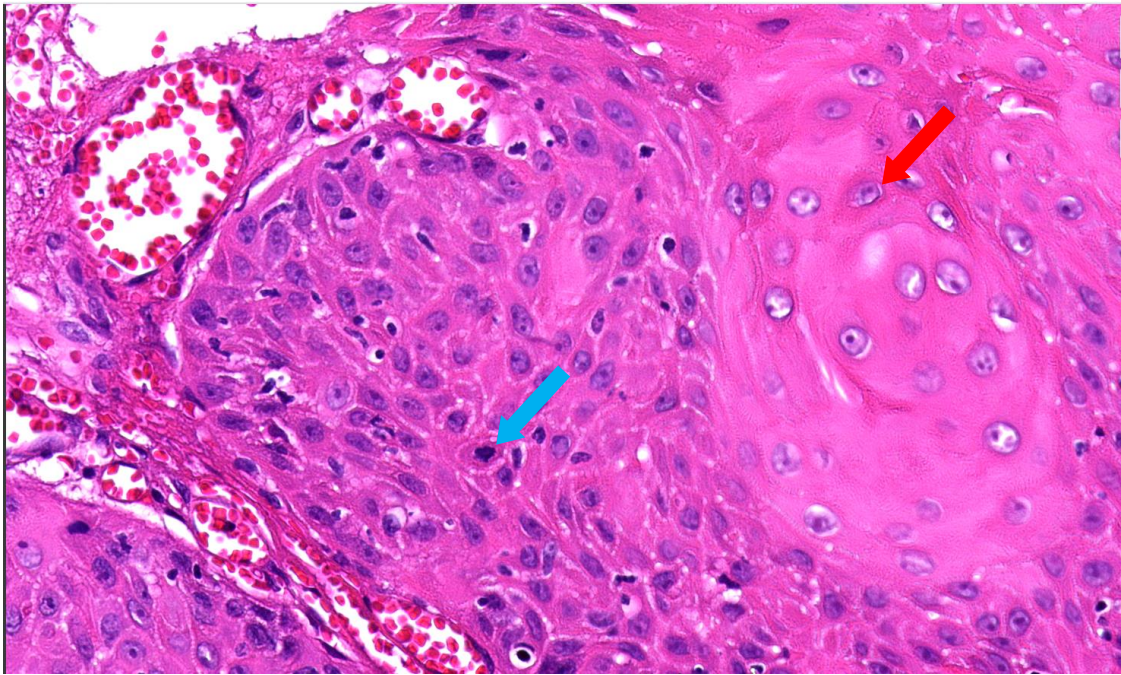


Fig. 5

