

NO. 052 Syphilis

*請大家看玻片左半部較淡染的組織，其細胞細節比較清楚

<ul style="list-style-type: none">➤ 低倍可見上皮有增生的情形 (elongated, blunt rete ridges) (Fig. 1 red ↑) ; 下方 lamina propria 裡有大量的發炎細胞 (Fig. 1 blue ↑)。➤ 上皮內可見大量的 neutrophils (intense exocytosis of neutrophils into the epithelium)。(Fig. 2 red ↑)➤ 大量的 lymphocytes 與 plasma cells 在 lamina propria。並圍繞在血管 (Fig. 3 yellow ↑) 週邊 (perivascular inflammatory infiltrate)。	<p>標記重點：</p> <ol style="list-style-type: none">1. Epithelial hyperplasia (Fig. 1 red ↑)2. Intense exocytosis of neutrophils into the epithelium (Fig. 2 red ↑)3. Perivascular inflammatory infiltrate<ul style="list-style-type: none">- Plasma cell (Fig. 3 green ↑)- Lymphocyte (Fig. 3 blue ↑)
---	--

Fig. 1

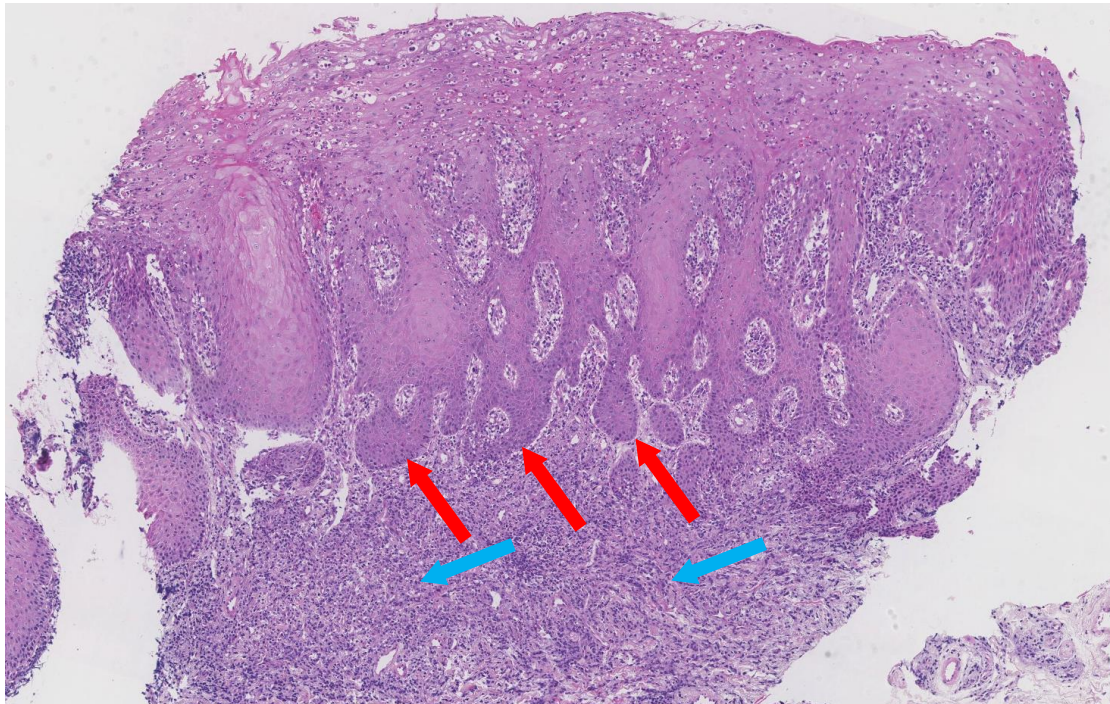


Fig. 2

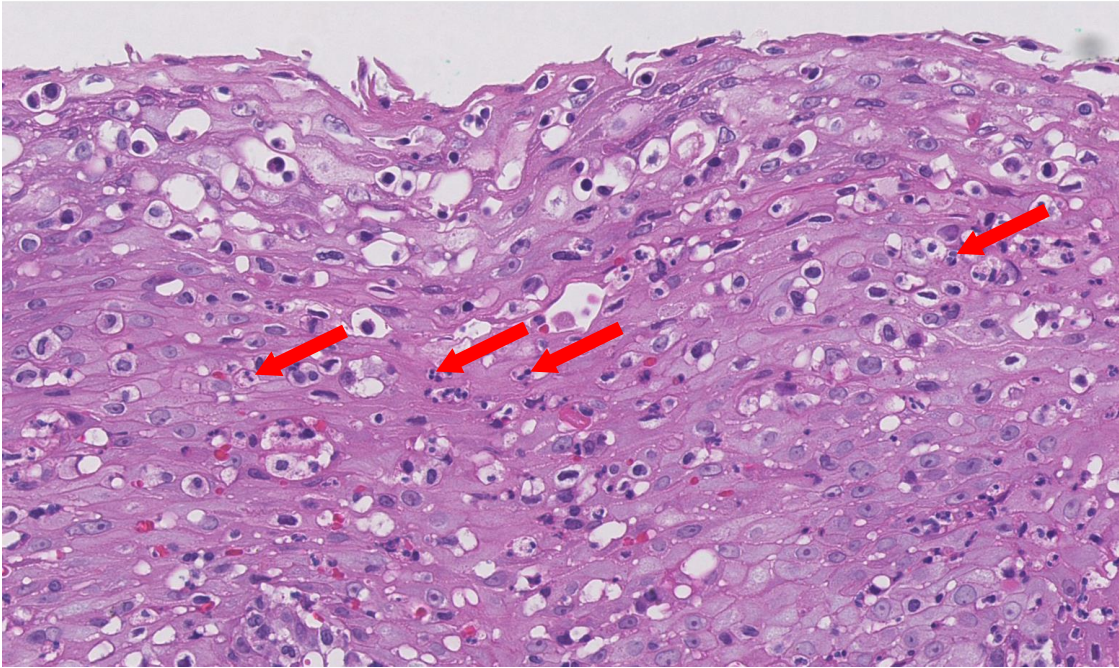


Fig. 3

