

NO. 051 Actinomycosis

<ul style="list-style-type: none">▶ 低倍下，可看到 lamina propria 中有一大區塊為 subacutely inflamed granulation tissue (Fig. 1 red dot line) · 中間有些濃染之菌落 (Fig. 1 blue ↑)。▶ 菌落周圍是放射線狀 (club shape filaments that form a radiating rosette pattern) · 稱為 actinomycotic colony (Fig. 2 red ↑)。▶ Actinomycotic colony 的中心處呈現 basophilic · 周邊則有 eosinophilic club shape filaments。	<p>標記重點：</p> <ol style="list-style-type: none">1. Colonies of actinomycotic organism (Fig. 1 blue ↑)2. Club-shaped filaments that form a radiating rosette pattern (Fig. 2 red ↑)3. Neutrophils (細胞核呈現多葉狀) (Fig. 3 red ↑)4. Lymphocyte (沒有細胞質只有圓、濃染的細胞核) (Fig. 3 yellow ↑)5. Plasma cell (細胞核偏一邊) (Fig. 3 blue ↑)
--	---

Fig. 1

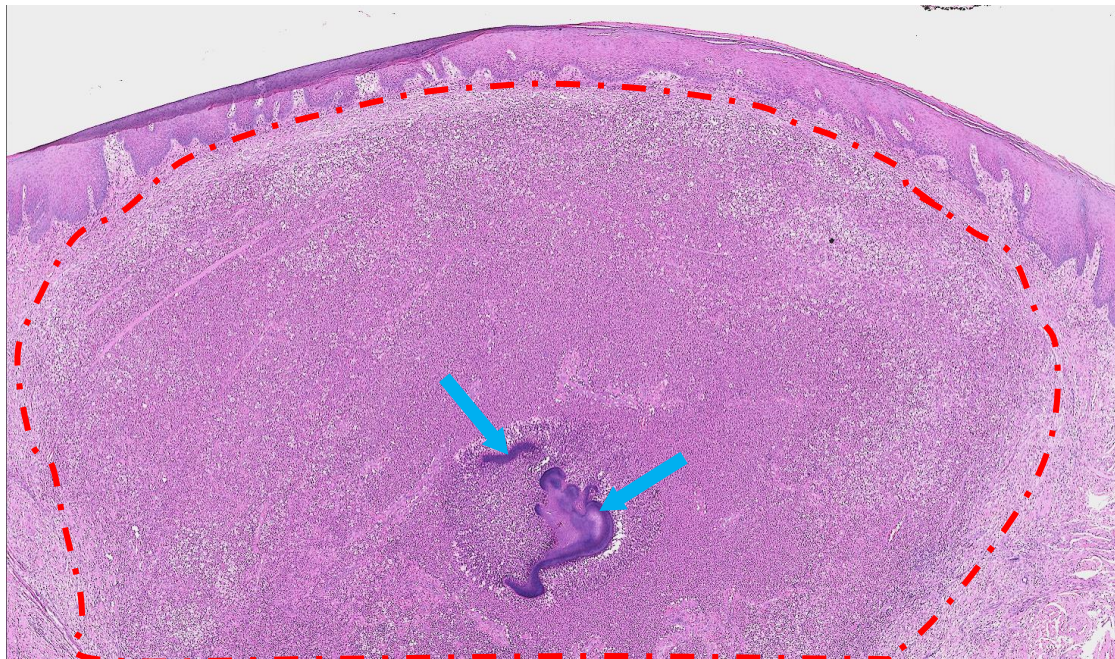


Fig. 2

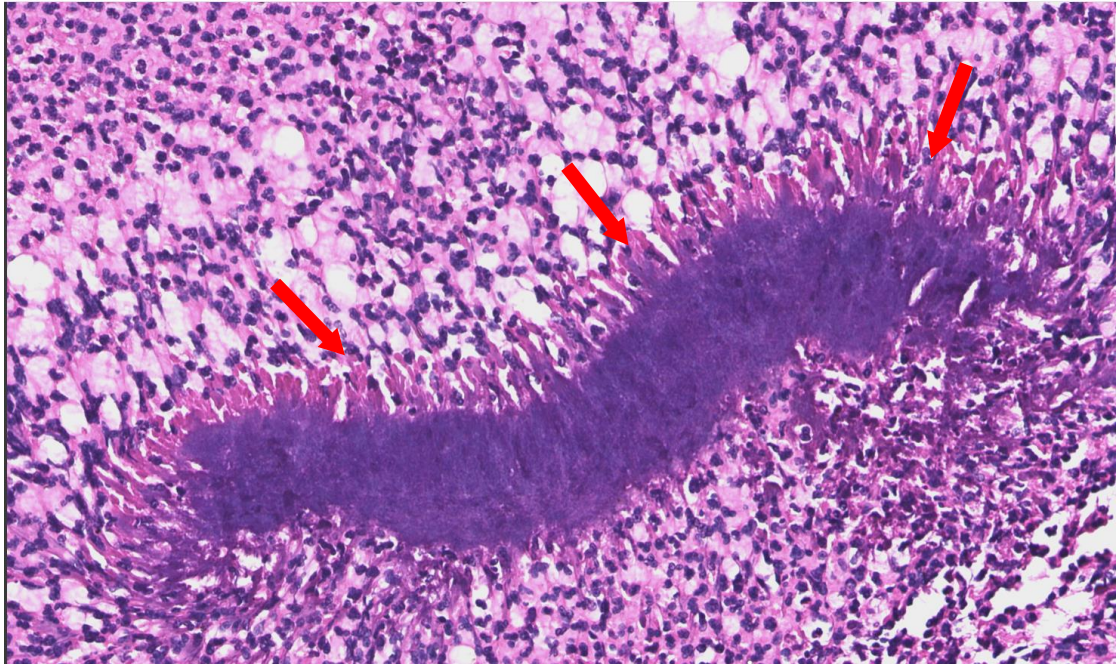


Fig. 3

