

## NO. 050 Tuberculosis, buccal mucosa

|  |  |
|--|--|
| <ul style="list-style-type: none"><li>➤ 可觀察到很多一圈圈的 tubercle ( 又稱 Chronic granulomatous inflammation )</li><li>➤ Tubercle 由以下細胞所構成：<ul style="list-style-type: none"><li>■ Epithelioid histiocyte</li><li>■ Langhans giant cell · 細胞核排列成馬蹄形</li><li>■ Lymphocyte 、 plasma cell 等發炎細胞</li><li>■ Fibrosis 外圍有 fibrous tissue 圍繞</li></ul></li><li>➤ 若在 tubercle 中央有整片淡粉紅色，都沒有 cells 的部份，就是屬於 caseation necrosis 的壞死性組織。</li></ul> | <p>標記重點：</p> <ul style="list-style-type: none"><li>● Tubercle : (Fig. 1,2 red dot line)<ul style="list-style-type: none"><li>■ Epithelioid histiocyte (Fig. 2,3 blue ↑)</li><li>■ Langhans giant cell (Fig. 2, 3 yellow ↑)</li><li>■ Lymphocyte (Fig. 2,3 red ↑)</li><li>■ Caseous necrosis (Fig. 1,2 green ↑)</li></ul></li></ul> |
|--|--|

Fig. 1

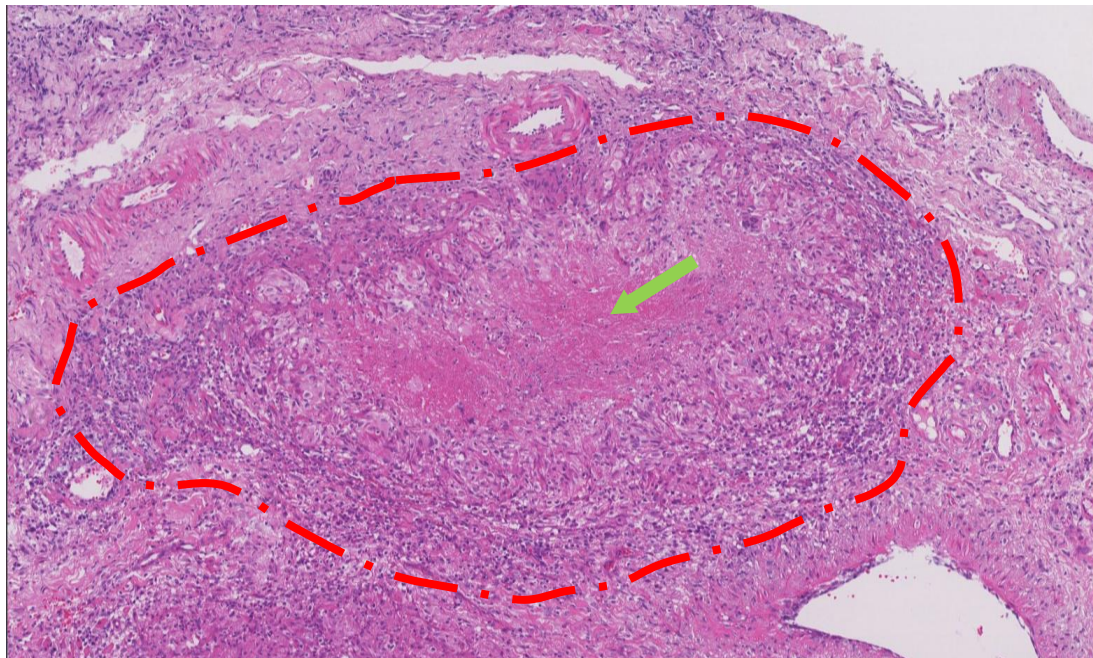


Fig.2

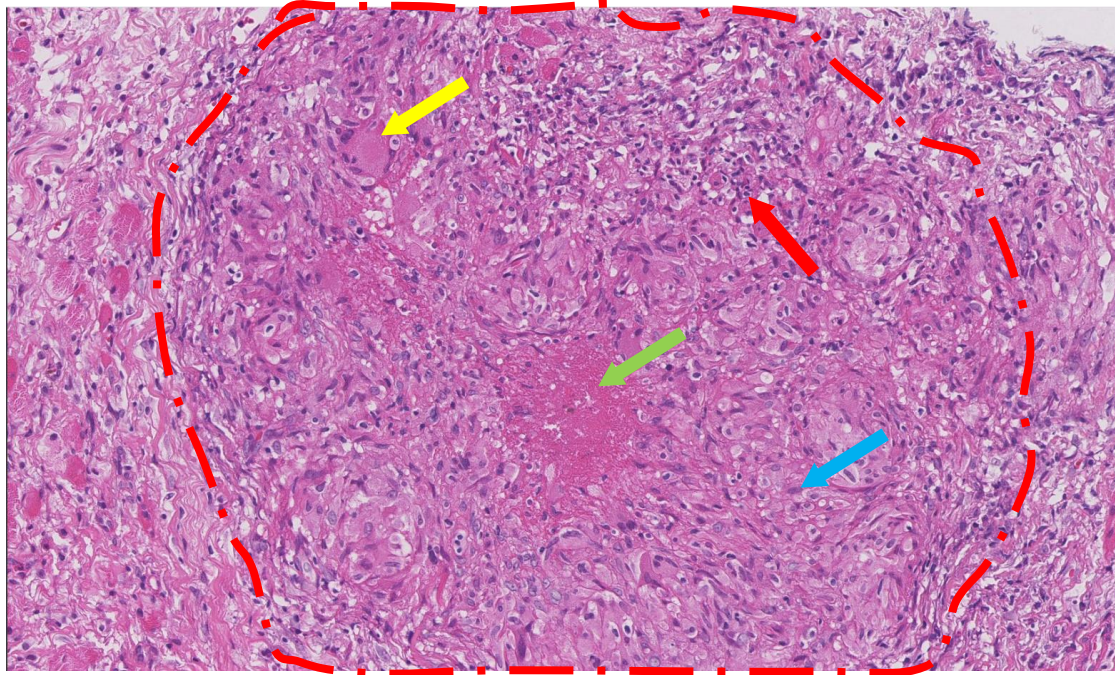


Fig.3

