

NO. 043 Cemento-ossifying fibroma

<ul style="list-style-type: none"> ➤ Tumor 含 cementum and/or bone 和 immature fibrous tissue 即稱 cemento-ossifying fibroma。 ➤ Immature fibrous tissue : fibrous tissue 為 immature 的，其 cellularity 高，細胞肥胖，但和 dental papilla 的 fibrous tissue 不大一樣，比較像 PDL 的 fibrous tissue。 ➤ Calcification : cementum or bone。 <ul style="list-style-type: none"> ■ bone 應有 lacunae 中有 osteocyte，常以 trabeculae 的形態出現。 ■ cementum 為深紫色。以 cementum 形狀來分，形態偏圓形也稱為 cementicle。這些 cementum-like spherules 週邊可見 brush border (像被毛刷刷過，與周圍的 fibrous tissue 融為一體) 	<p>標記重點：</p> <ol style="list-style-type: none"> 1. Immature fibrous stroma (Fig. 2 green ★) 2. Calcified materials: <ul style="list-style-type: none"> - Cementum (cementicle) (Fig. 1 blue ↑) - Bone trabeculae (Fig. 1 yellow ↑) 3. Brush border of cementum-like spherules (Fig. 2 red ↑)
--	--

Fibrous tissue stroma 的比較		
Mature fibrous tissue	Immature fibrous tissue 似 dental papilla	Immature fibrous tissue 似 PDL
Ameloblastoma	Ameloblastic fibroma Ameloblastic fibro-odontoma	Cemento-ossifying fibroma Odontogenic fibroma

Fig. 1

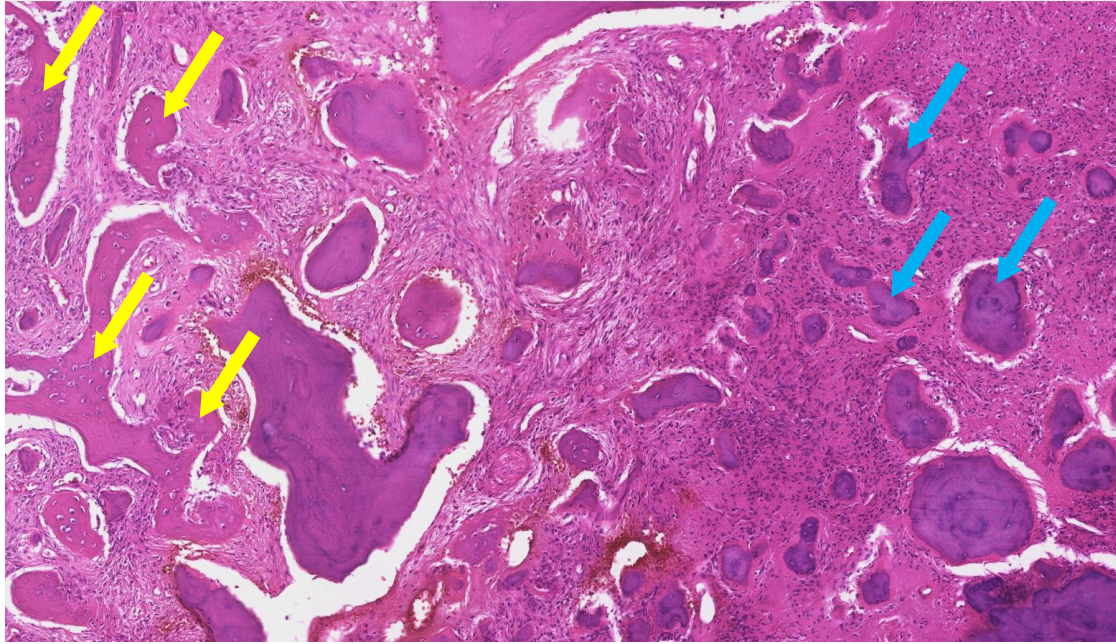


Fig. 2

