

## NO. 037 Ameloblastic carcinoma

\*請大家看玻片右半部較淡染的組織，其細胞細節比較清楚

<ul style="list-style-type: none"> <li>➤ 低倍下，tumor cells 的排列型態包含 follicular type (Fig. 1 red ↑) 與 plexiform type (Fig. 1 blue ↑)。</li> <li>➤ 構成 tumor island 的外層細胞為 high-columnar 的 ameloblast-like cells，而中央為 stellate reticulum-like cells。</li> <li>➤ 此片之所以為 carcinoma 重點在於：             <ul style="list-style-type: none"> <li>- High cellularity (crowding) *可與先前的 ameloblastoma 切片相比較</li> <li>- Increased mitotic figures</li> <li>- Nuclear hyperchromatism</li> <li>- Increased nuclear to cytoplasmic ratio</li> </ul> </li> </ul>	<p>標記重點：</p> <ol style="list-style-type: none"> <li>1. Ameloblast-like cells (Fig. 2 blue ↑)</li> <li>2. Stellate reticulum-like cells (Fig. 2 red ↑)</li> <li>3. Mitotic figures (Fig. 3 green ↑)</li> <li>4. Nuclear hyperchromatism (Fig. 2 yellow ↑)</li> <li>5. Increased nuclear to cytoplasmic ratio (Fig. 3 orange ↑)</li> </ol>
--	--

Fig. 1

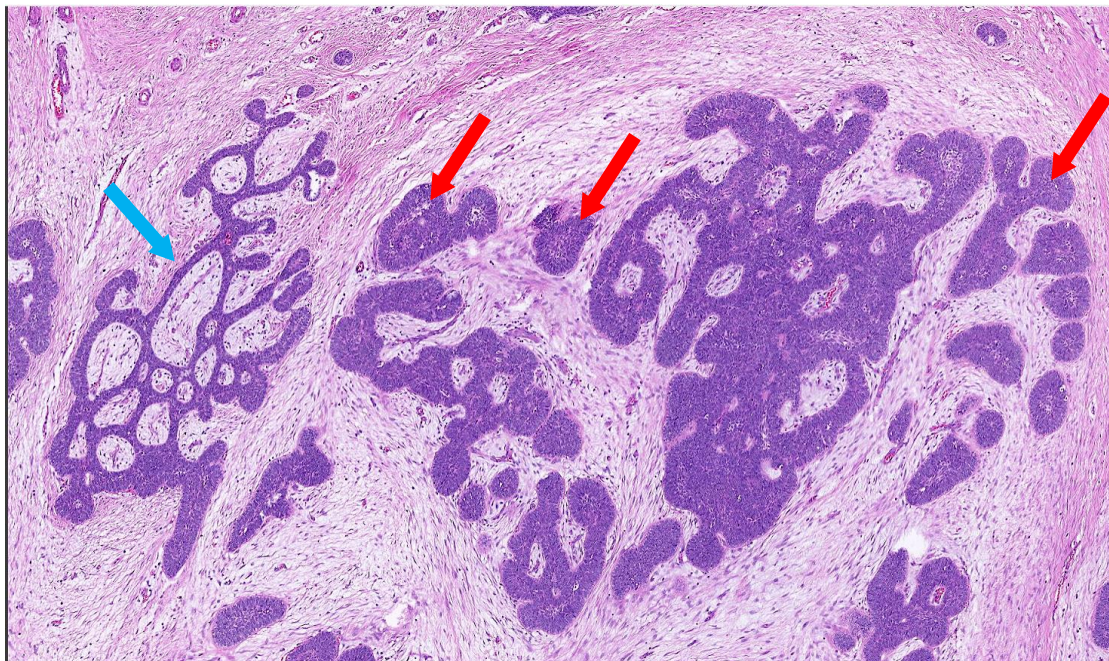


Fig. 2

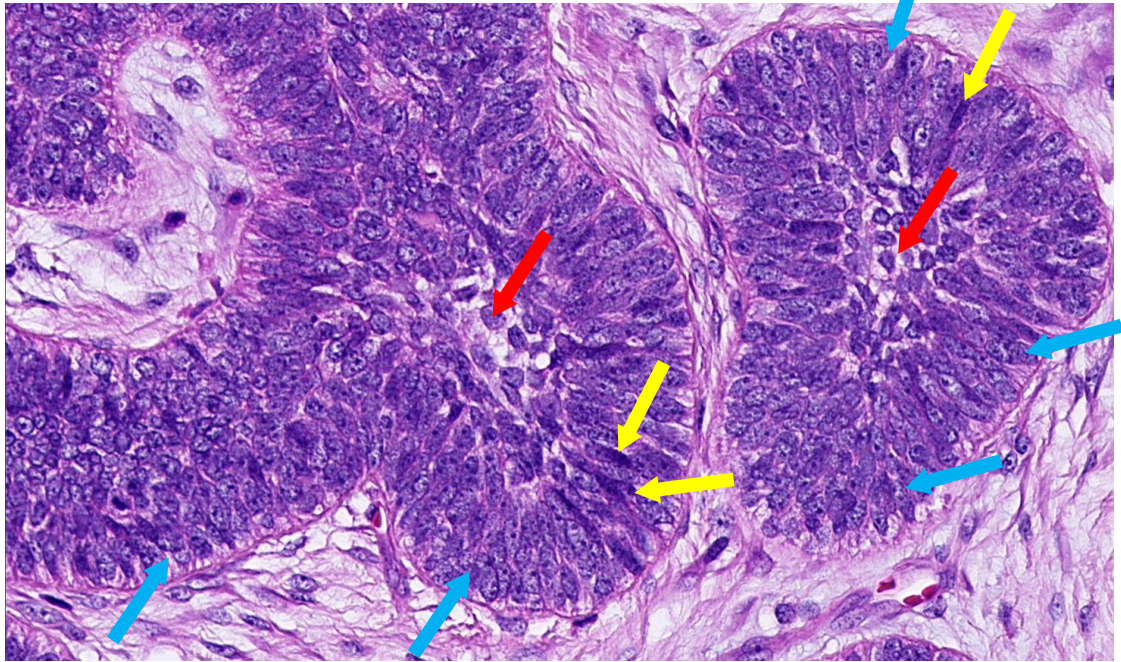


Fig. 3

