

## NO. 035 Ameloblastoma, granular cell

<ul style="list-style-type: none"> <li>➤ Granular cell type 指 stellate reticulum-like cells 被 granular cell 所取代。</li> <li>➤ 在低倍下可見此片 tumor cells 以 islands 形態 infiltrating 在 fibrous stroma 中，為 follicular type。(Fig. 1)</li> <li>➤ 在高倍下，ameloblast-like cell 仍為正常模樣 (Fig. 2&amp;3 blue ↑)，但 stellate reticulum-like cells 轉為 granular cells (Fig. 2&amp;3 red ↑)，其呈現圓胖的粉紅色細胞，內有顆粒狀的細胞質。</li> </ul>	<p>標記重點：</p> <ol style="list-style-type: none"> <li>1. Ameloblast-like cells (Fig. 2&amp;3 blue ↑)</li> <li>2. Stellate reticulum-like cells 轉為 granular cells—abundant cytoplasm filled with eosinophilic granule (Fig. 2&amp;3 red ↑)</li> <li>3. Fibrous stroma (Fig. 2 green ↑)</li> </ol>	
<p><b>Ameloblastoma (NO. 032~035)</b></p>		
<p>依細胞排列方式分</p>	<p>依 stellate reticulum-like cells 變化分</p>	<p>依 fibrous stroma 的緻密度分</p>
<p>Follicular type Plexiform type</p>	<p>Acanthomatous Granular cell</p>	<p>Desmoplastic</p>

Fig. 1

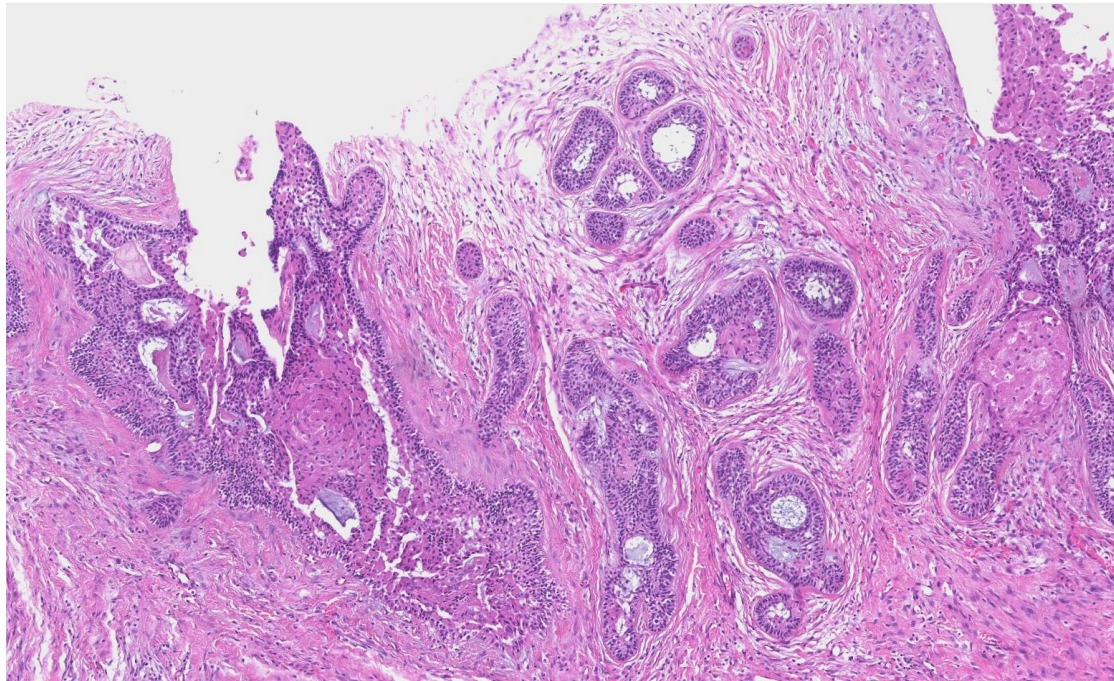


Fig. 2

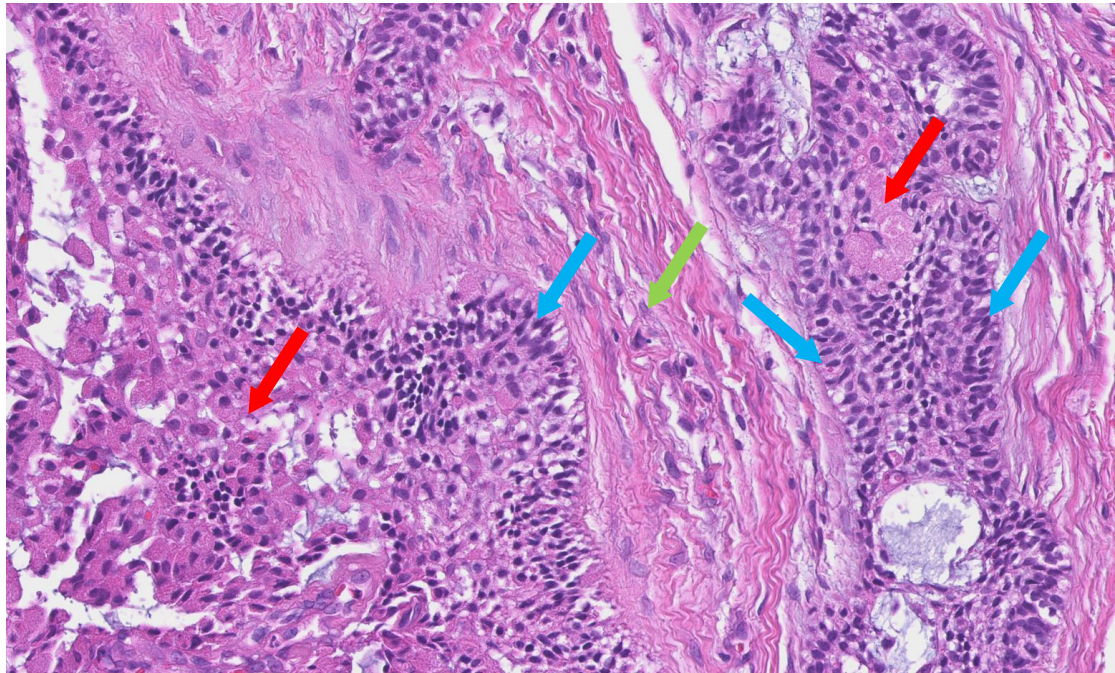


Fig. 3

