

NO. 033 Ameloblastoma, Plexiform

<ul style="list-style-type: none"> ➤ 此片中 tumor 大多以 plexiform 型態 (Fig. 1 blue ↑) · 也有部分是呈現 follicular 型態 (Fig. 1 yellow ↑)。 ➤ Tumor island 拉得很長 · 呈網狀 (anastomosing strands)。 ➤ Tumor strands/islands 間仍以 fibrous stroma 分隔開 (Fig. 2&3 green ↑)。 ➤ Tumor island 的基本型態和 follicular type 相同 · 只是 follicular type 的形態似 ameloblast-like cells (Fig. 2&3 red ↑) 包圍 stellate reticulum-like cells (Fig. 2&3 yellow ↑) · 而 plexiform type 則似 ameloblast-like cells 包圍 fibrous stroma (Fig. 2&3 green ↑)。 	<p>標記重點：</p> <ol style="list-style-type: none"> 1. Tumor island 的 plexiform 型態呈網狀 (anastomosing strands) (Fig. 1 blue ↑) 2. Fibrous stroma (Fig. 2&3 green ↑) 3. Stellate reticulum-like cells (Fig. 2&3 yellow ↑) 4. Ameloblast-like cells (Fig. 2&3 red ↑) <ul style="list-style-type: none"> - High-columnar - Reverse polarity (nuclei located at the opposite to basement membrane) (Fig. 3 blue ↑) - Subnuclear vacuolization (Fig. 3 blue ↑) 5. Basement membrane (Fig. 3 black line)
--	---

Fig. 1

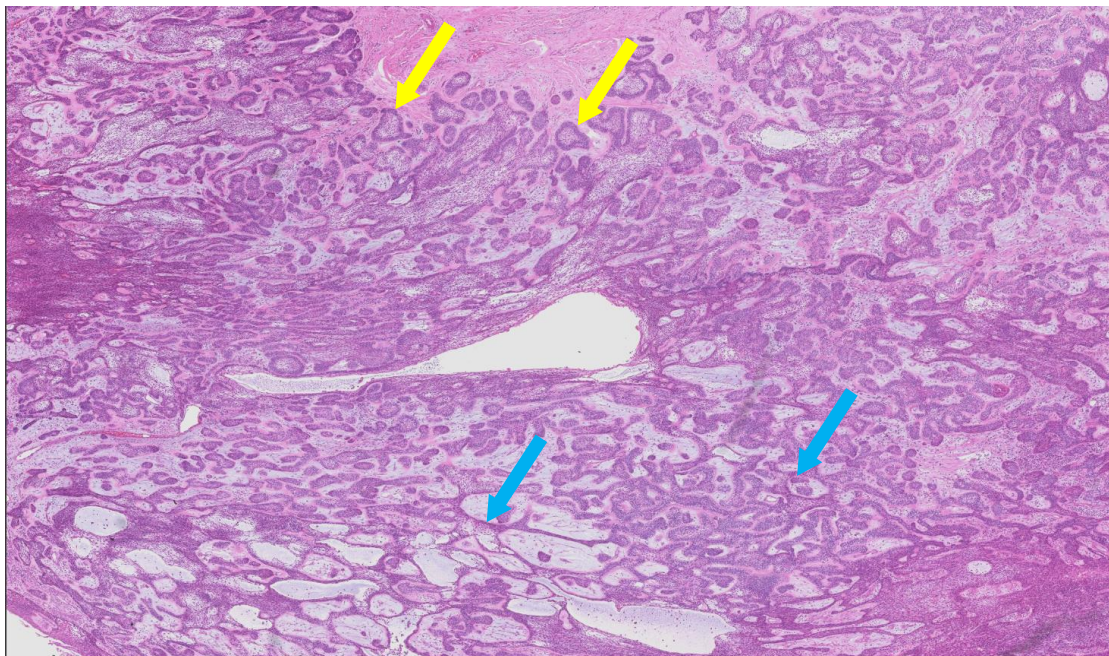


Fig. 2

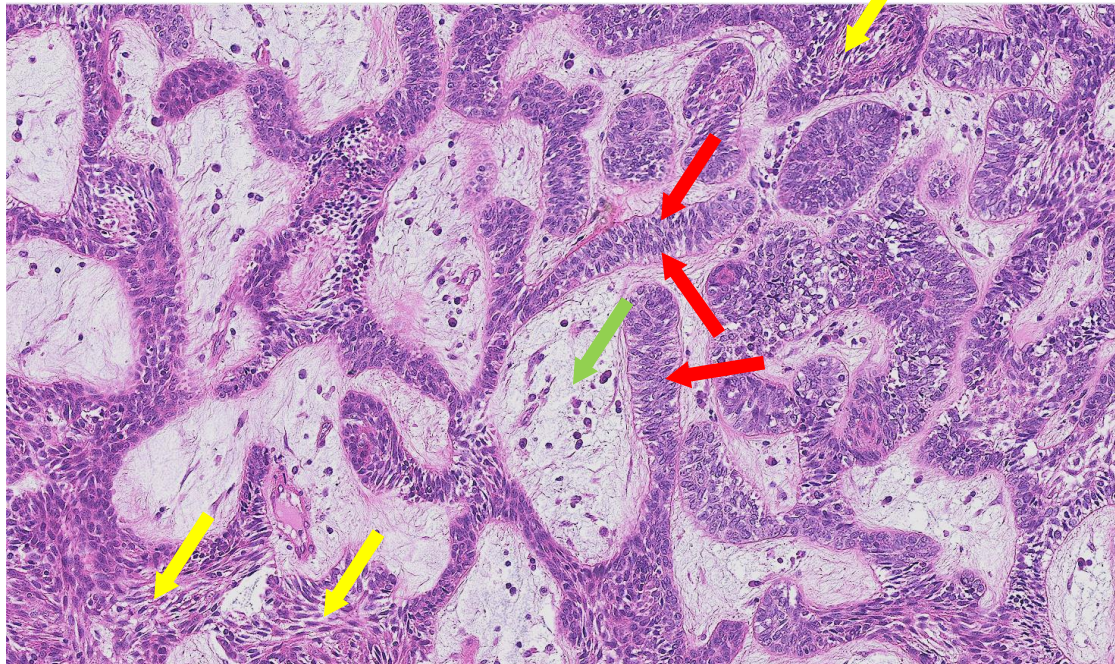


Fig.3

