

NO. 032 Ameloblastoma, follicular, acanthomatous

<ul style="list-style-type: none"> ➤ 低倍下，tumor islands 的型態為 follicular type (Fig. 1 blue ↑)。 ➤ Tumor islands 間仍以 fibrous stroma 分隔開 (Fig. 2&3 green ↑)。 ➤ 構成 tumor island 的外層細胞為 high-columnar 的 ameloblast-like cells，而中央為 stellate reticulum-like cells。 ➤ 重點在 stellate reticulum-like cells 中有 squamous metaplasia，並且有 keratin formation 的現象 (keratin 呈粉紅色)，有時甚至有 keratin pearl 產生。此現象即稱 acanthomatous change ➤ Ameloblastoma 的 tumor islands 中有時可見 cystic change (Fig. 1 red ↑)。 	<p>標記重點：</p> <ol style="list-style-type: none"> 1. Ameloblast-like cells (Fig. 2&3 red ↑) - High-columnar - Reverse polarity(nuclei located at the opposite to basement membrane)(Fig. 3 blue ↑) 2. Squamous metaplasia 的 stellate reticulum-like cells (Fig. 2&3 yellow ↑) 3. Keratin / keratin pearl formation (Fig. 3 white ↑) 4. Fibrous stroma (Fig. 2&3 green ↑) 5. Basement membrane (Fig. 3 black line)
---	--

Fig. 1

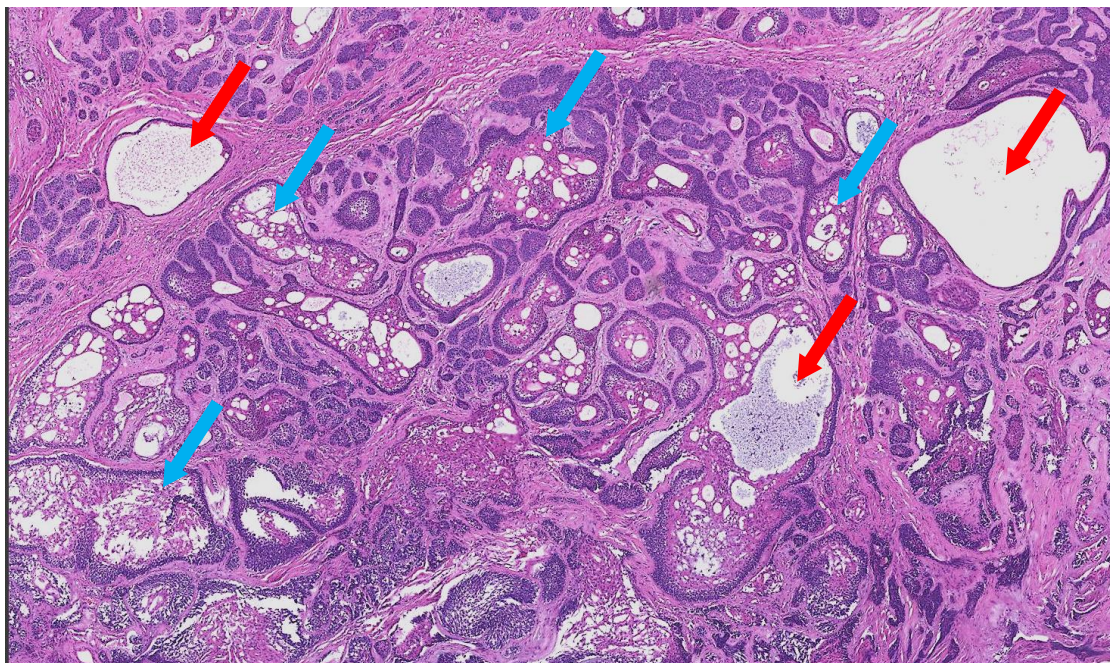


Fig. 2

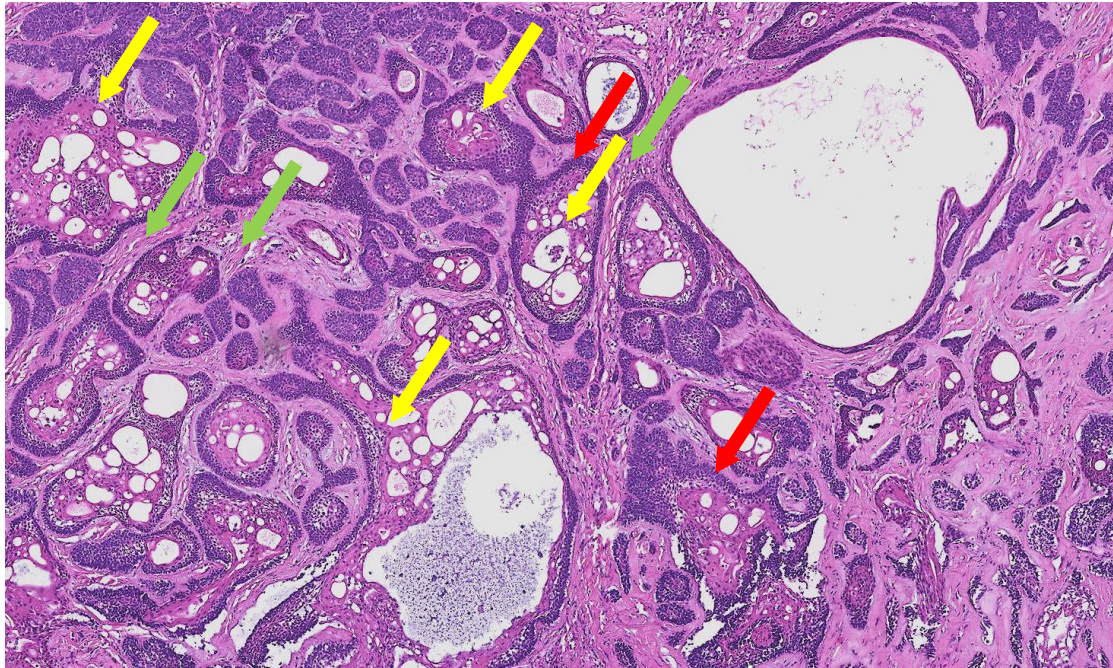


Fig. 3

