

## NO. 031 Rhabdomyosarcoma, alveolar type

<ul style="list-style-type: none"> <li>➤ 低倍下可見腫瘤細胞密度相當高(high cellularity)·這些腫瘤細胞外觀呈現小、藍、圓的特徵。細胞樣態較為原始(primitive rounded cells)·看不出明顯的分化。此外·可以看到一些 tumor necrosis 的區域。</li> <li>➤ 高倍下可見腫瘤細胞型態較單一(relatively monomorphic)·細胞質的量極少。然而細胞核呈現明顯的 hyperchromatism, pleomorphism 與大量的 mitotic figures 。</li> <li>➤ 部分的腫瘤可見細胞形成一個個 nests·中間有細的 fibrous septa。Nest 中間偶而可見 loss of cellular cohesion·形成 alveolar-like (pseudoalveolar) spaces。*與 KMUOP-029 alveolar soft part sarcoma 相似。</li> <li>➤ 細胞可見有 plasmacytoid 的型態(細胞核偏一邊)。此特徵也稱作 rhabdoid feature。</li> <li>➤ 另外可見有些細胞呈現拉長、多角形、偏紅的細胞質·這些細胞稱 rhabdomyoblast。此種細胞為診斷 rhabdomyosarcoma 的重要特徵。</li> <li>➤ 有時可見 multinucleate tumor giant cells</li> </ul>	<p>標記重點：</p> <ol style="list-style-type: none"> <li>1. Tumor necrosis (Fig. 1 blue ↑)</li> <li>2. Alveolar-like (pseudoalveolar) spaces (Fig. 2 red dot line)</li> <li>3. Mitosis (Fig. 3&amp;5 yellow ↑)</li> <li>4. Plasmacytoid/rhabdoid feature (Fig. 3&amp;4 blue ↑)</li> <li>5. Residual skeletal muscle (Fig. 3 red ↑)</li> <li>6. Rhabdomyoblast (Fig. 4 green ↑)</li> <li>7. Multinucleate tumor giant cells (Fig. 5 orange ↑)</li> </ol>
--	--

Fig. 1

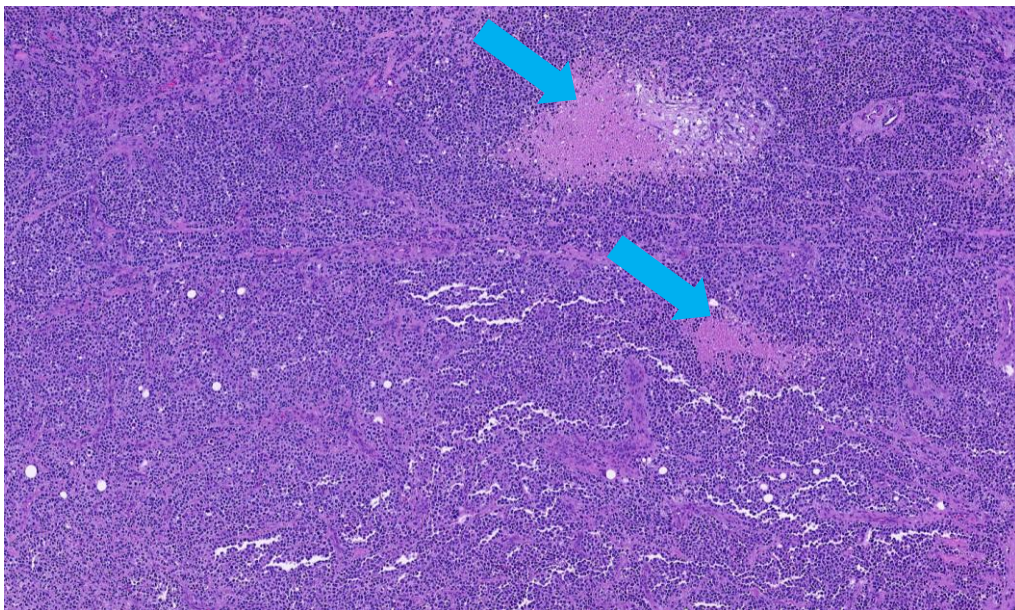




Fig. 2

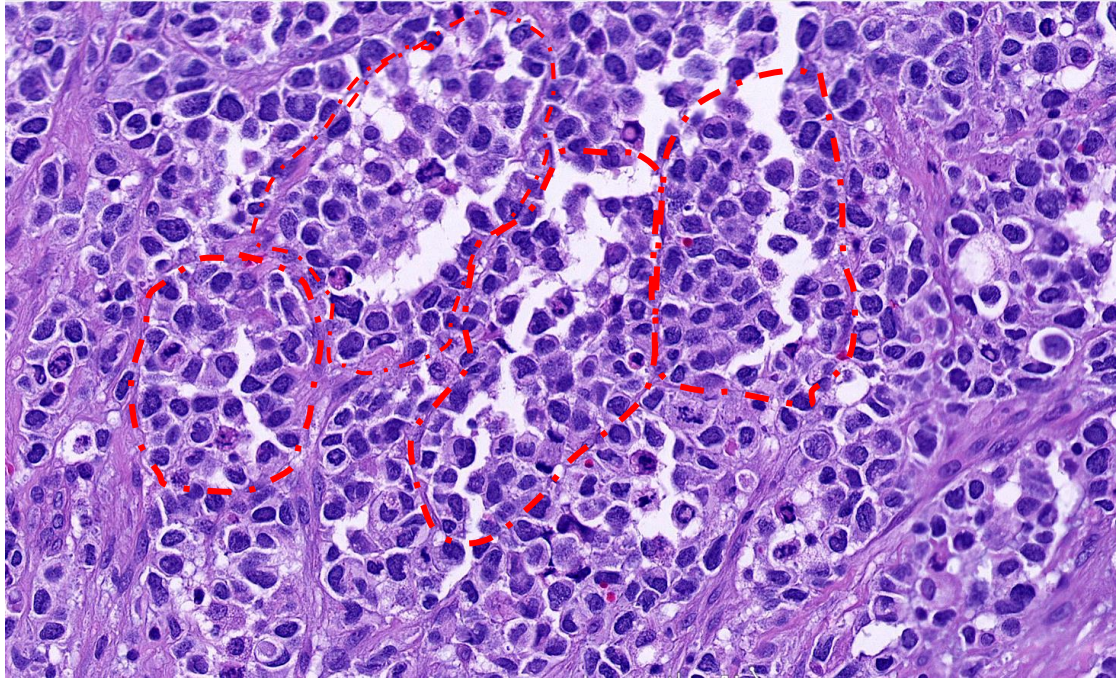


Fig. 3

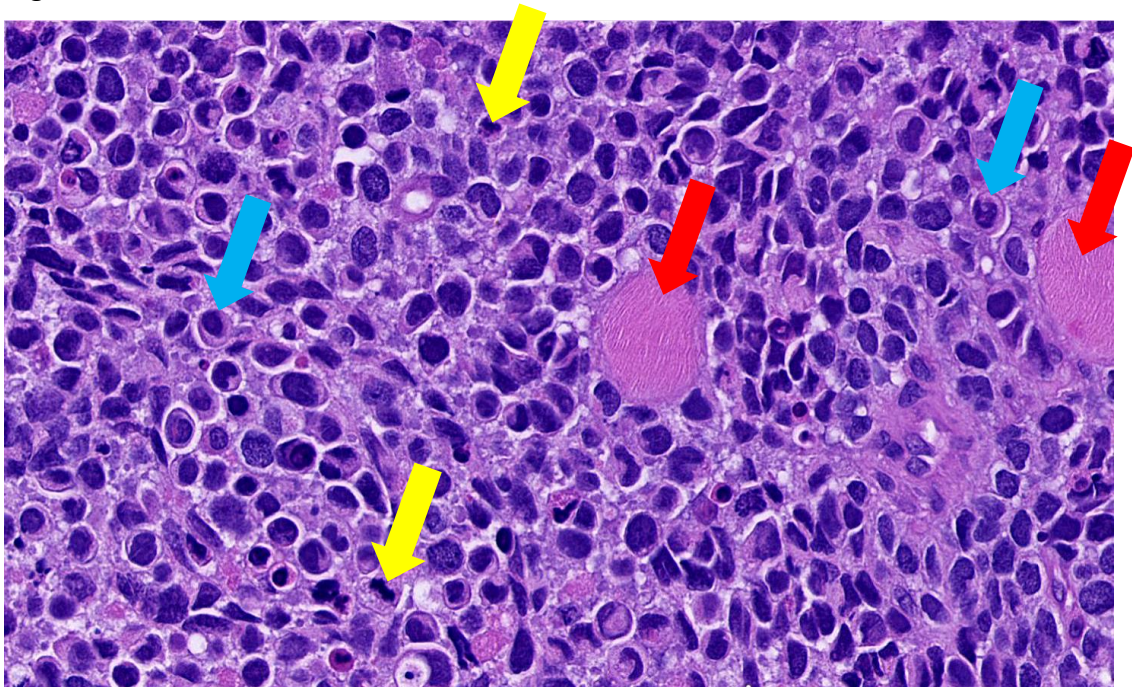




Fig. 4

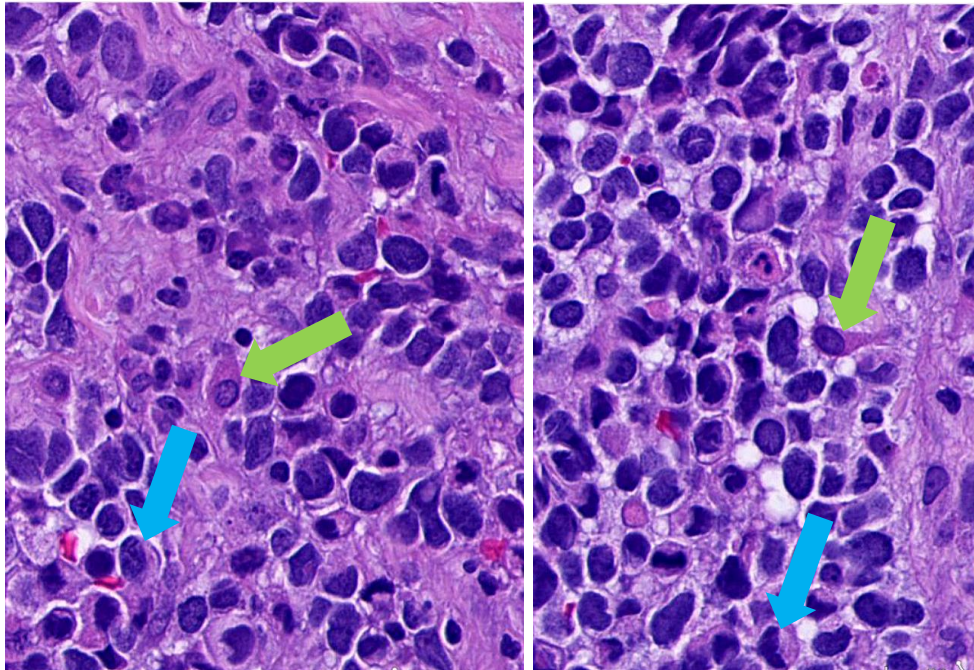


Fig. 5

