

## NO. 024 Malignant peripheral nerve sheath tumor (MPNST)

<ul style="list-style-type: none"> <li>➤ 低倍下可見一束一束·整片的 uniform spindle cells 形成水流或螺紋(whorls)狀的排列。(Fig. 1)</li> <li>➤ 可見細胞密度不一的區域 (alternating zones of cellularity) (Fig. 2)。</li> <li>➤ 這些 spindle cells 有著淡紅色的細胞質·然而細胞彼此間的界限不明顯。細胞核有時會呈現波浪(wavy)、紡錘狀(tapered) (Fig. 3 blue ↑)。</li> <li>➤ 可見明顯的 nuclear hyperchromatism (Fig. 4 yellow ↑)、increased mitosis (Fig. 3 red ↑)、nuclear pleomorphism (Fig. 4 yellow ↑)。</li> <li>➤ 此類 spindle cell malignancy 很難在 HE 染色下做出診斷·通常是搭配進一步 IHC 來偵測其細胞來源再做出診斷。</li> </ul>	<p>標記重點：</p> <ol style="list-style-type: none"> <li>1. Fascicles and broad whorls of spindle cells (Fig. 1)</li> <li>2. Alternating zones of cellularity (Fig. 2)</li> <li>3. Wavy nuclei (Fig. 3 blue ↑)</li> <li>4. Mitotic figures (Fig. 3 red ↑)</li> <li>5. Hyperchromatic, pleomorphic nuclei (Fig. 4 yellow ↑)</li> </ol>
--	--

Fig. 1

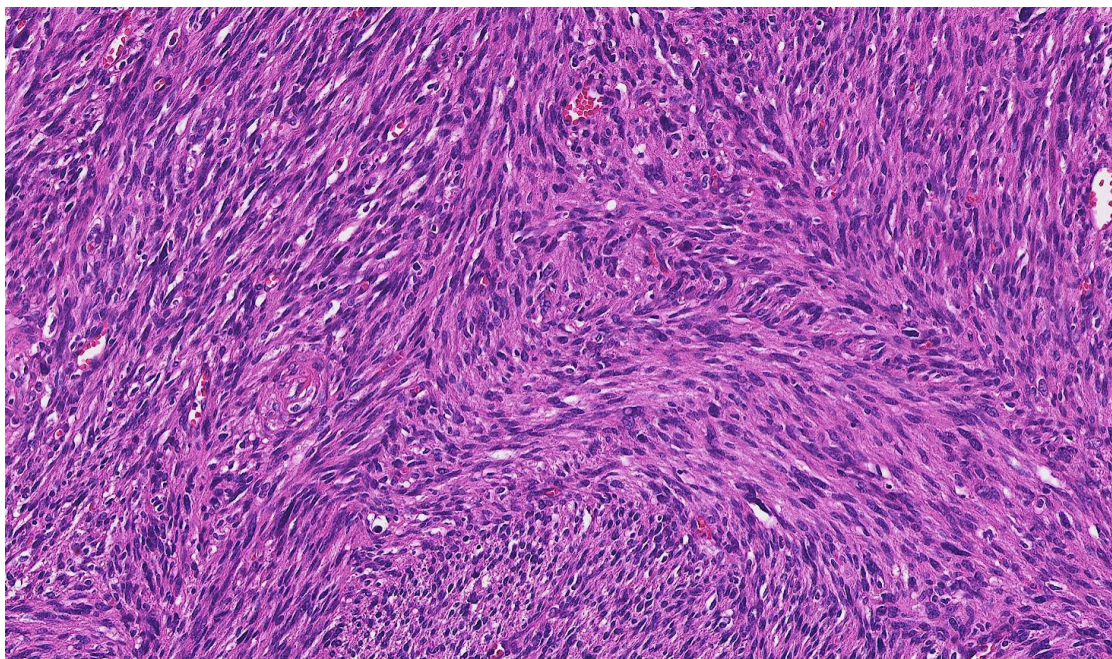


Fig. 2

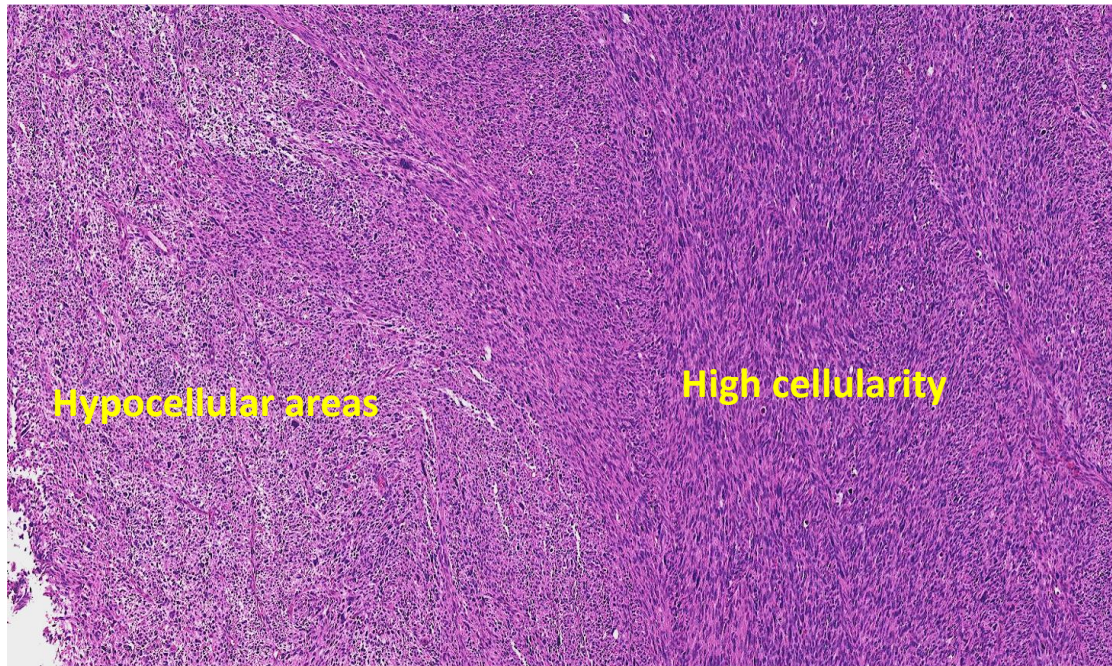


Fig. 3

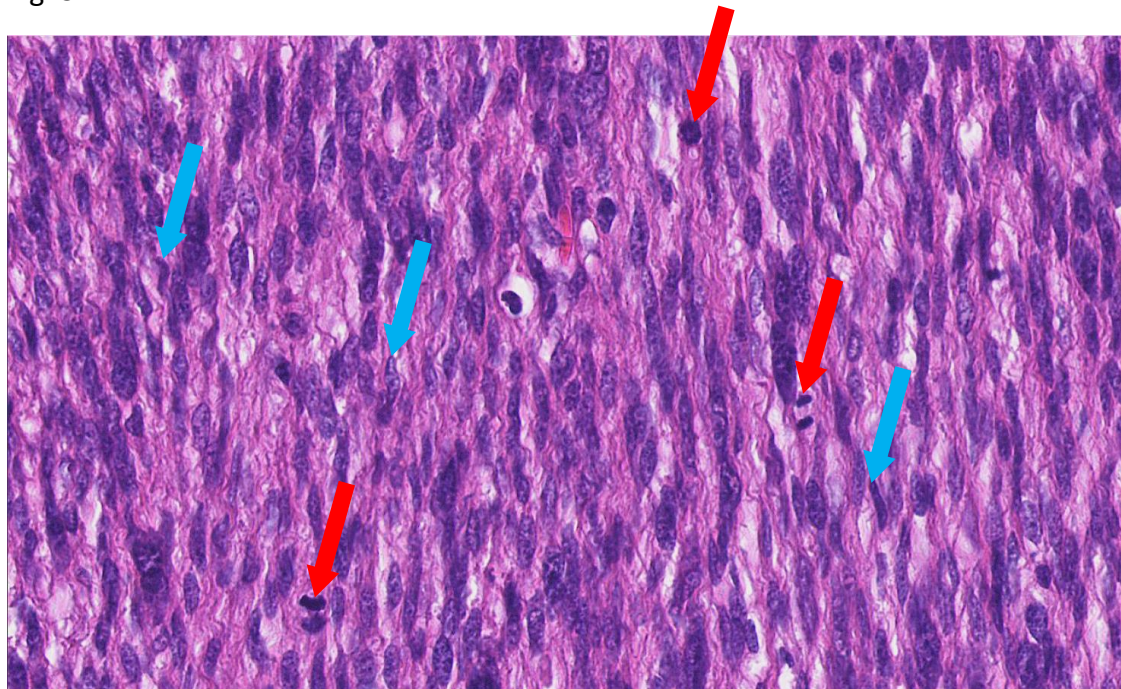


Fig. 4

