

NO. 017 Hemangioma, cavernous (venous malformation)

<ul style="list-style-type: none">▶ 低倍下可見大量血管於 lamina propria 中增生(vascular proliferation)。(Fig. 1 red ↑)▶ 這些 fibrous connective tissue 中的血管大且呈竇狀(sinusoidal)·而同樣可看見 RBC 充滿空腔。(Fig. 1 green ↑)▶ 圍繞這些增生血管的內皮細胞(endothelial cell)是成熟、扁平的內皮細胞。(Fig. 1 yellow ↑)	<p>標記重點：</p> <ol style="list-style-type: none">1. 竇狀 (blood-filled cavernous space) 血管增生 (Fig. 1 red ↑)2. Fibrous connective tissue (Fig. 1 blue ↑)3. RBC (Fig. 1 green ↑)4. Small, flattened endothelial cells (Fig. 1 yellow ↑)
---	--

Fig. 1

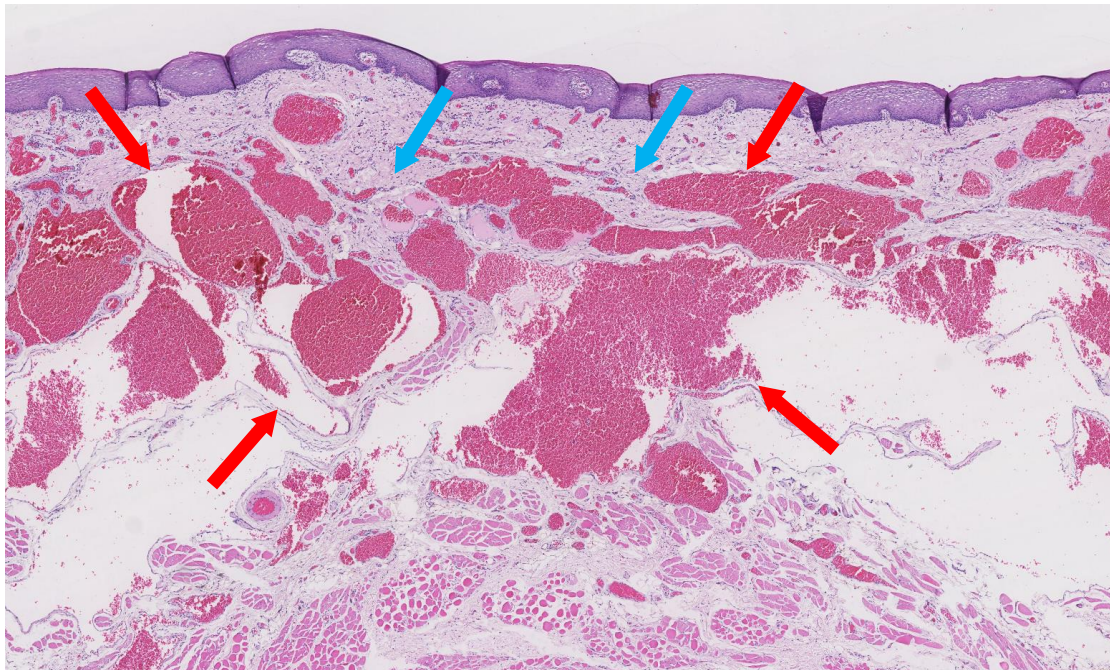


Fig. 2

