

NO. 015 Fibroma

<p>➤ 此片為結締組織的病變，表皮層被擠壓而變薄 (但基底細胞是增生的)，也因此 basal cell layer 比較平整，幾乎沒有 rete peg。</p> <p>➤ Lamina propria 由正常的 loose connective tissue 變成 dense connective tissue。</p>	<p>標記重點：</p> <ol style="list-style-type: none">1. Fibrous connective tissue covered by stratified squamous epithelium2. Fibrous connective tissue 比較 dense and collagenized (Fig. 2 red ↑)3. 沒有腰身，為 dome-shaped mass (Fig. 1 green ↑)4. Atrophy of the rete ridge (Fig. 2 yellow line)，並標示正常的 rete ridges (Fig. 1 blue ↑)5. Not encapsulated
---	--

Fig. 1

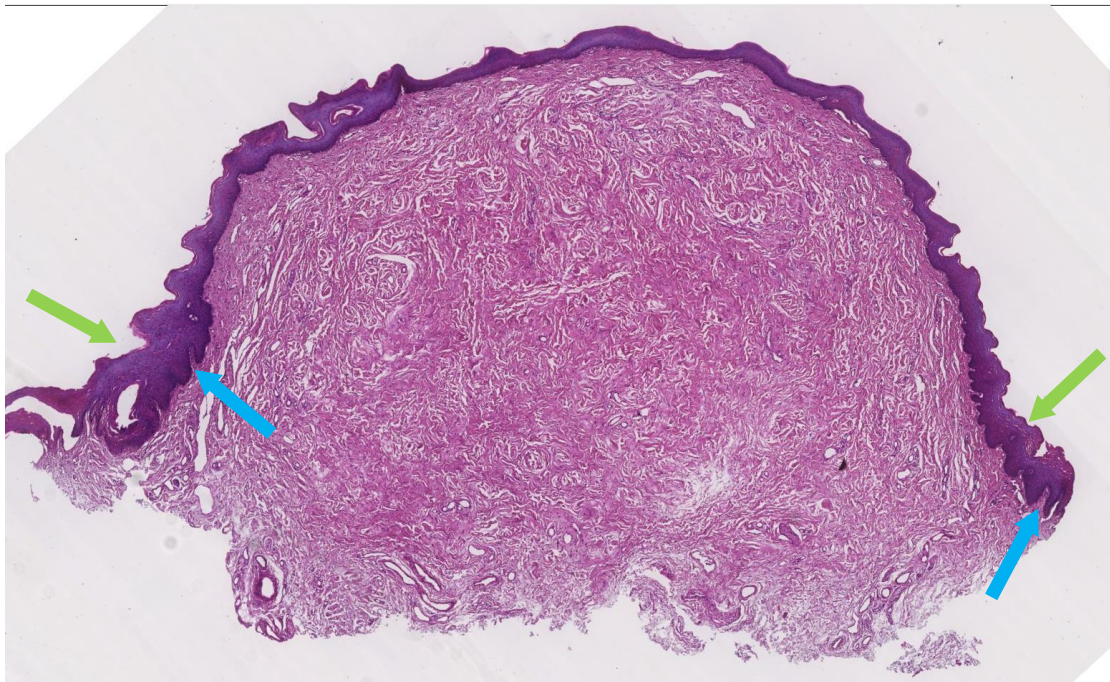


Fig. 2

