

## NO. 094 Sjogren' s syndrome (benign lymphoepithelial lesion)

<ul style="list-style-type: none"> <li>➤ 低倍下可見深藍色一坨一坨(lobular architecture) · 很像 lymph node 的樣子 · 各個 lobule 間有 fibrous septa 將其分離開 · 在 lymphoid tissue 裡面是殘餘的 ductal tissue(由此可知並非是 lymph node)。</li> <li>➤ 原先的 acini 皆因為發炎刺激而消失。</li> <li>➤ Myoepithelial cell · intercalated duct cell 受到刺激而增生 · 形成海洋中小島的模樣 ( epimyoeplithelial island ) · 與週邊的 lymphoid tissue 統稱為 lymphoepithelial complexes 。</li> <li>➤ Lymphoepithelial complexes 週邊常見 eosinophilic hyaline material 。</li> <li>➤ Lymphoid tissue 可能會形成 germinal center 。</li> </ul>	<p>標記重點：</p> <ol style="list-style-type: none"> <li>1. Fibrous septum (Fig. 1 red ↑)</li> <li>2. Dense lymphocyte infiltrate (Fig. 1 blue ↑)</li> <li>3. Epimyoeplithelial island (Fig. 2 green ↑)</li> <li>4. Residual ducts (Fig. 2 yellow ↑)</li> <li>5. Eosinophilic hyaline material (Fig. 3 red ↑)</li> </ol>
---	---

Fig. 1

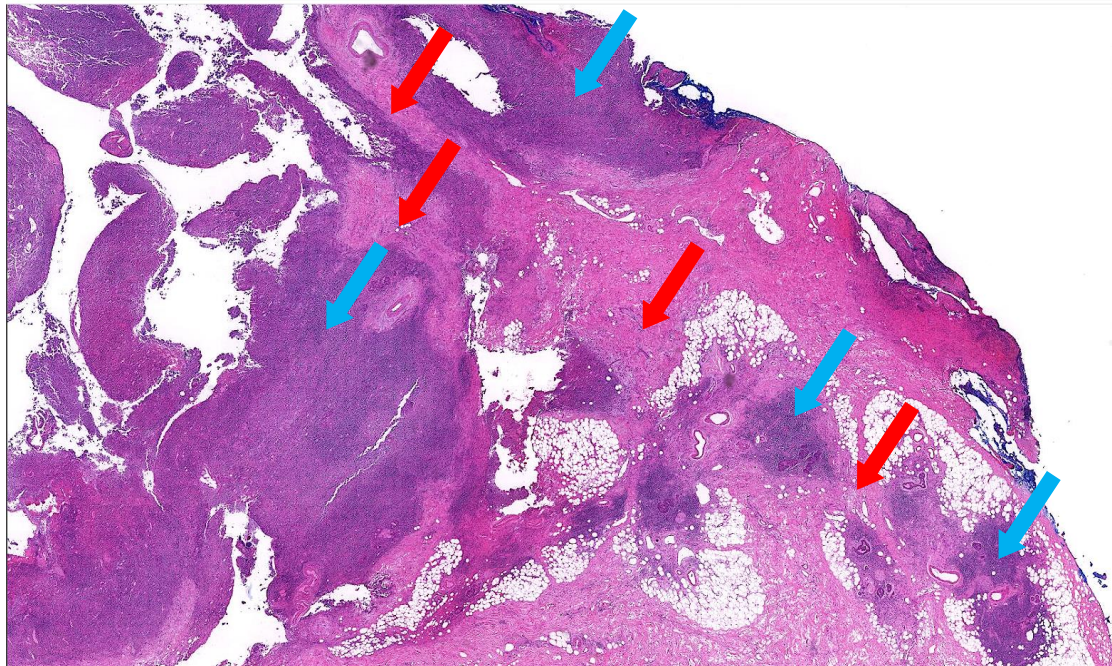




Fig. 2

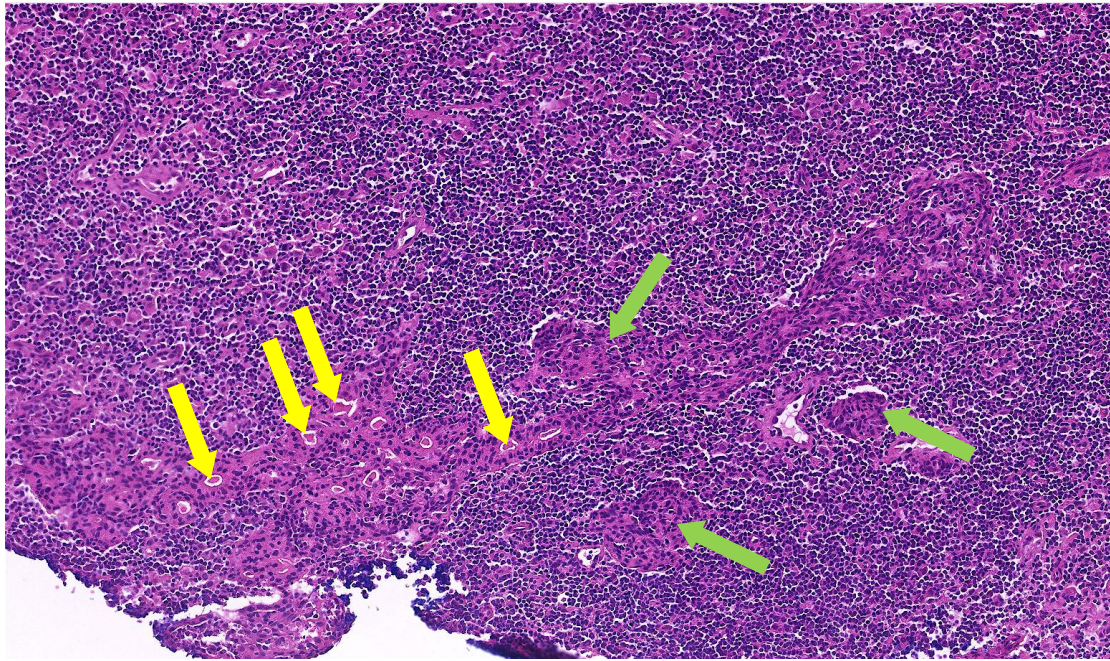


Fig. 3

