

## NO. 092 Sialadenoma papilliferum

<ul style="list-style-type: none"> <li>➤ 低倍下，可見表面之 squamous epithelium 呈現 papillary、verruroid 狀向外(exophytic)增生。上皮呈現 hyperparakeratosis 與 acanthosis。</li> <li>➤ 表皮下方之 ductal cells 也呈現向下(endophytic)papillary 狀增生，並與上方 squamous epithelium 相連。</li> <li>➤ Ductal cells 由兩層細胞構成：             <ul style="list-style-type: none"> <li>a. Luminal cells: tall columnar cells 並有 eosinophilic granular cytoplasm</li> <li>b. Basal cells: cuboidal cells with eosinophilic granular cytoplasm</li> </ul> </li> <li>➤ Fibrous stroma 中常見大量慢性發炎細胞浸潤(lymphocytes、plasma cells)。</li> </ul>	<p>標記重點：</p> <ol style="list-style-type: none"> <li>1. Papillary、verruroid proliferation of the surface epithelium (Fig. 1 red line)</li> <li>2. Hyperparakeratosis (Fig. 1 yellow ↑)</li> <li>3. Acanthosis (Fig. 1 green ↑)</li> <li>4. Endophytic、papillary proliferation of the ductal cells (Fig. 1&amp;2 blue ↑)</li> <li>5. Luminal cells (Fig. 3 yellow ↑)</li> <li>6. Basal cells (Fig. 3 green ↑)</li> <li>7. Basement membrane (Fig. 3 red line)</li> </ol>
--	--

Fig. 1

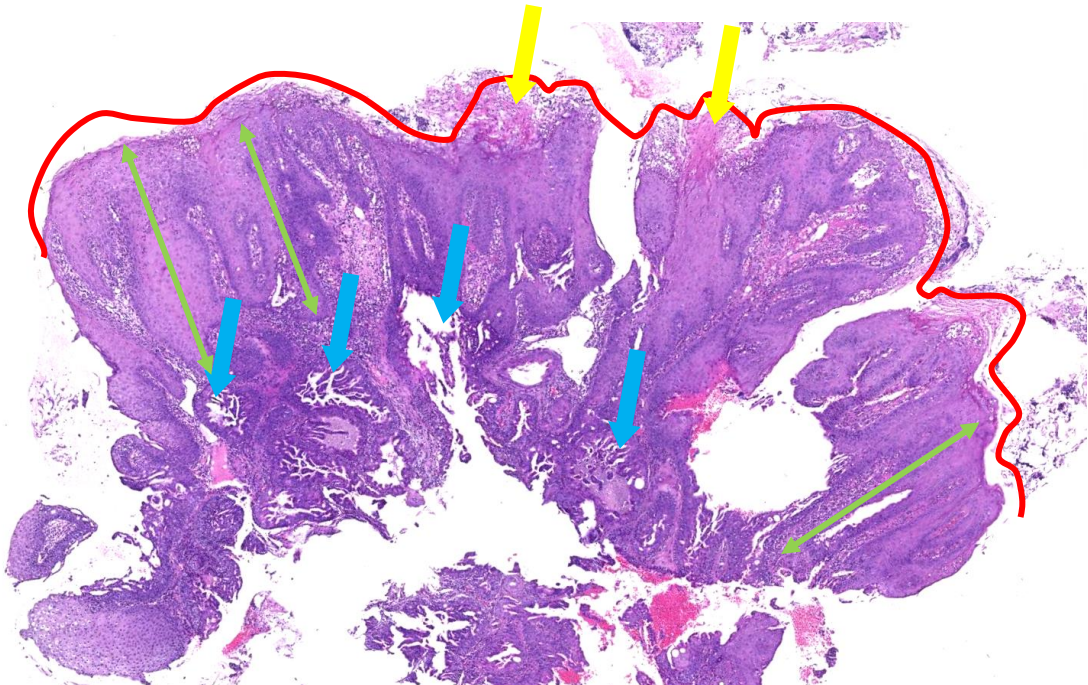


Fig. 2

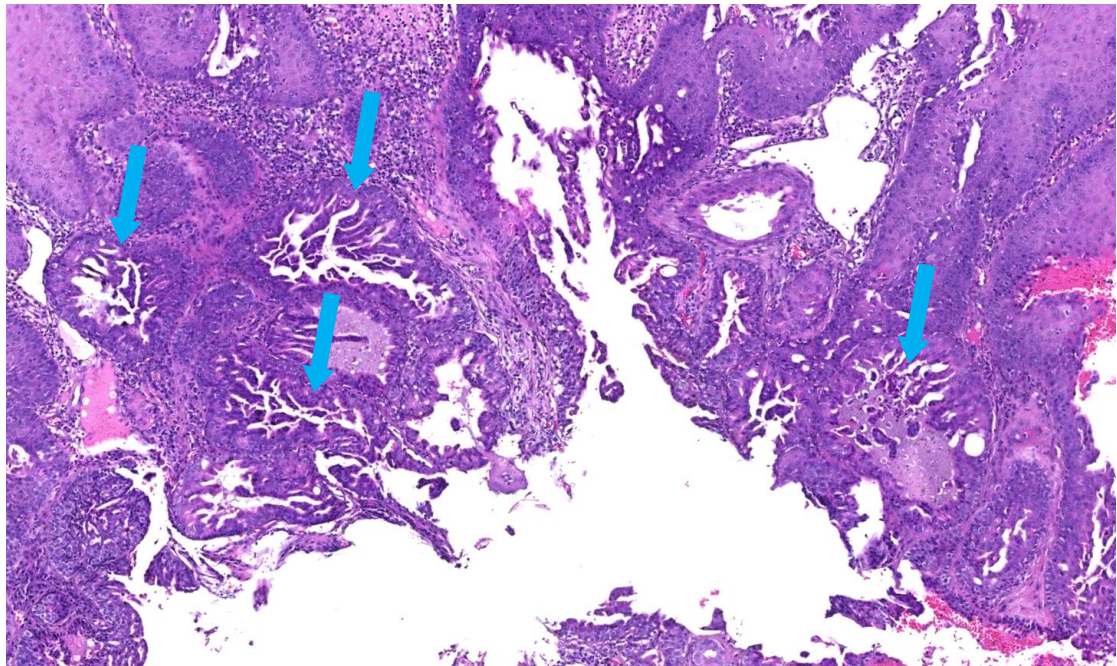


Fig. 3

