

NO. 089 Adenoid cystic carcinoma, solid type

<ul style="list-style-type: none"> ➤ 此 case 發生在口底的舌下腺，低倍下可見上方覆蓋之 oral epithelium (Fig. 1 red ↑) 與殘餘的 normal gland (Fig. 1 yellow ↑)。並可見腫瘤侵犯至 normal gland 中 (Fig. 1 blue ↑)。 ➤ 有些地方還是可見到 Swiss cheese appearance，但不多，主要還是以實心的 islands 居多，所以為 solid type。 ➤ 腫瘤細胞構成一樣有 ductal cells 與 myoepithelial cells。 ➤ Tumor island 中間可能會出現 central necrosis。 ➤ Mitosis 較 tubular、cribriform types 常見。 ➤ Tumor cells 也有較明顯的 pleomorphism。 	<p>標記重點：</p> <ol style="list-style-type: none"> 1. Solid tumor sheets (Fig. 1 green ↑) 2. Central necrosis (Fig. 7 blue ↑) 3. Tubular structure : <ul style="list-style-type: none"> - True lumen (Fig. 2 red ↑) - Ductal cell (Fig. 2&3 yellow ↑) - Myoepithelial cell (Fig. 2&3 green ↑) 4. Swiss cheese appearance/Pseudocyst (Fig. 4&5 blue ↑) 5. Mitosis (Fig. 6 red ↑)
---	---

Fig. 1

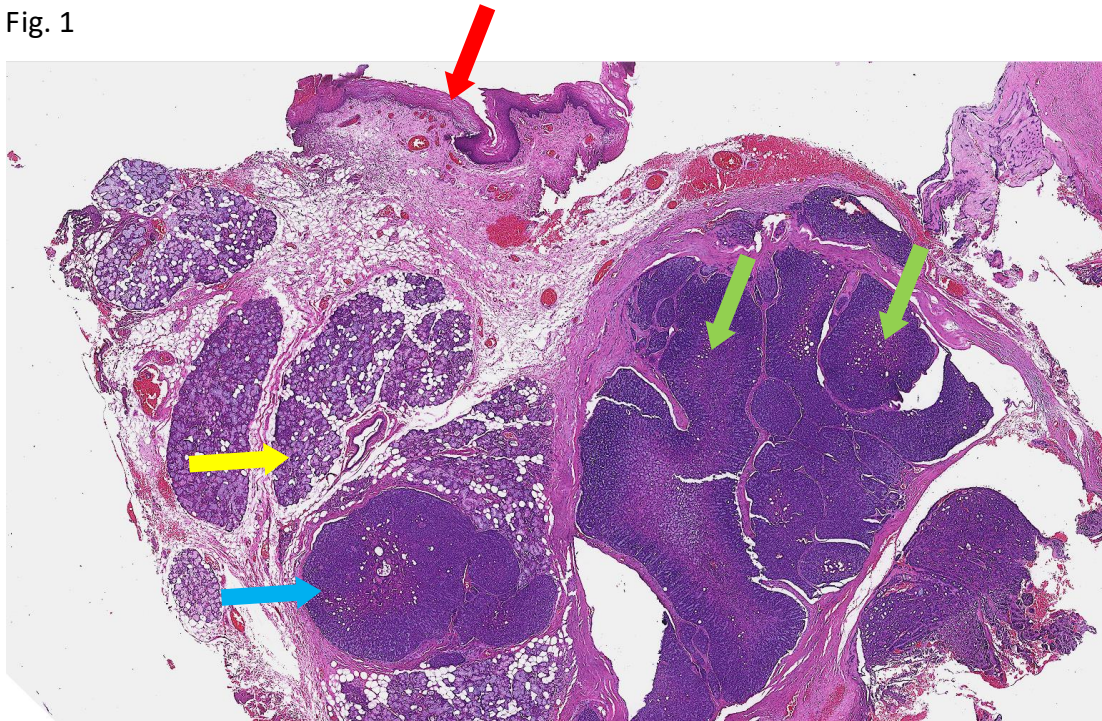


Fig. 2

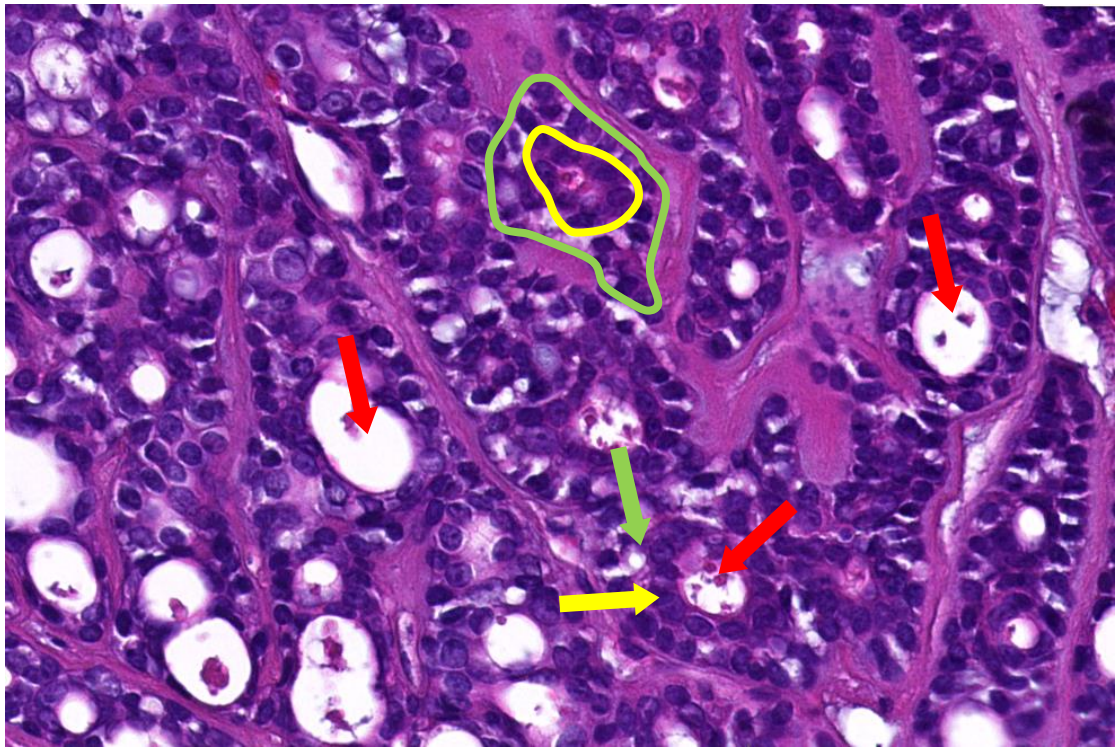


Fig. 3

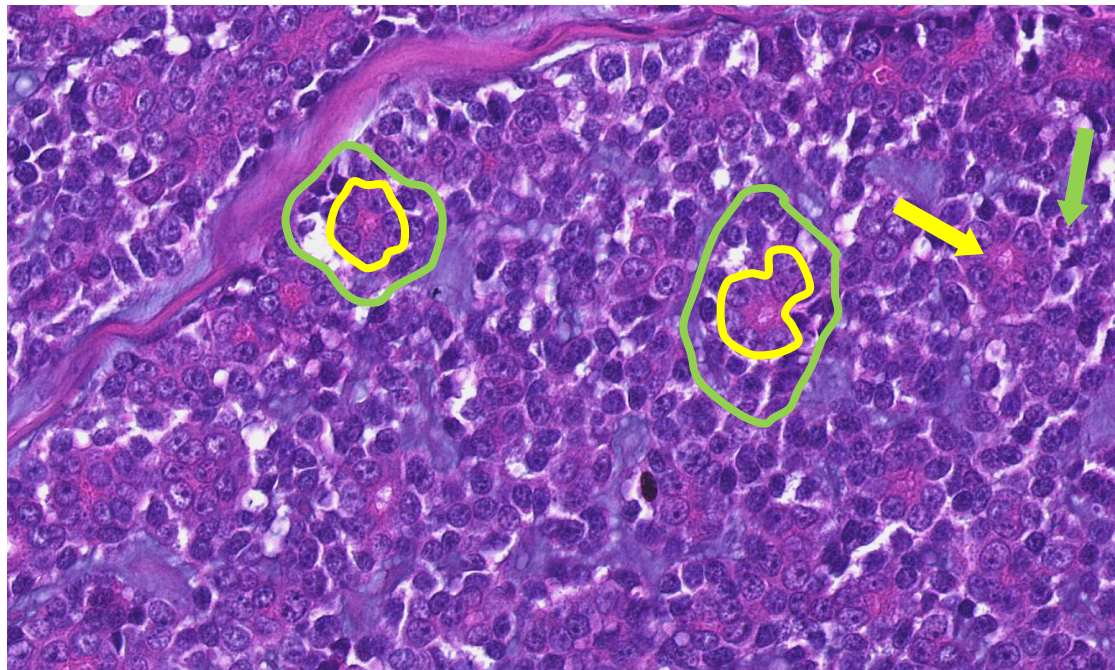


Fig. 4

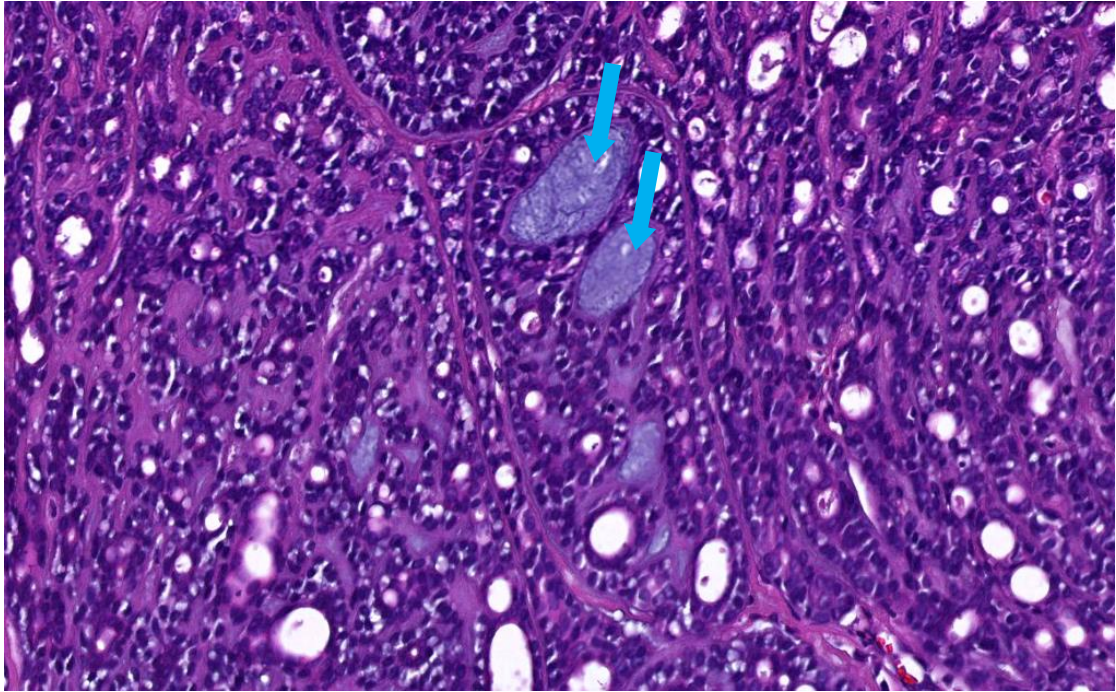


Fig. 5

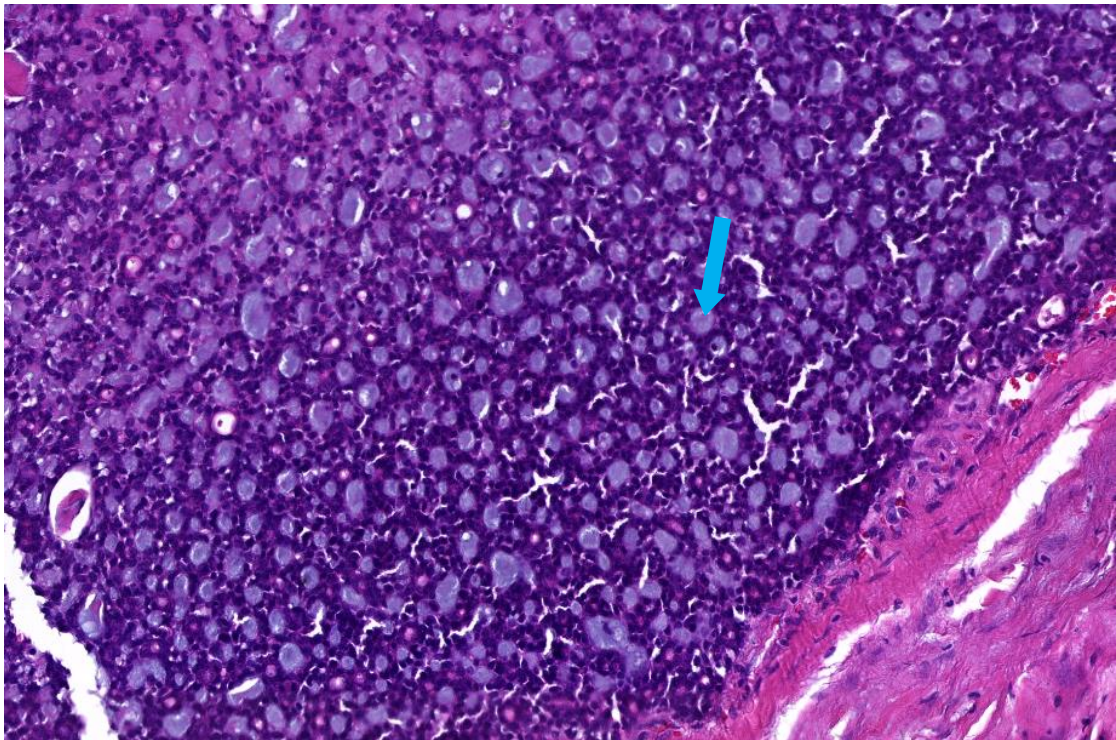


Fig. 6

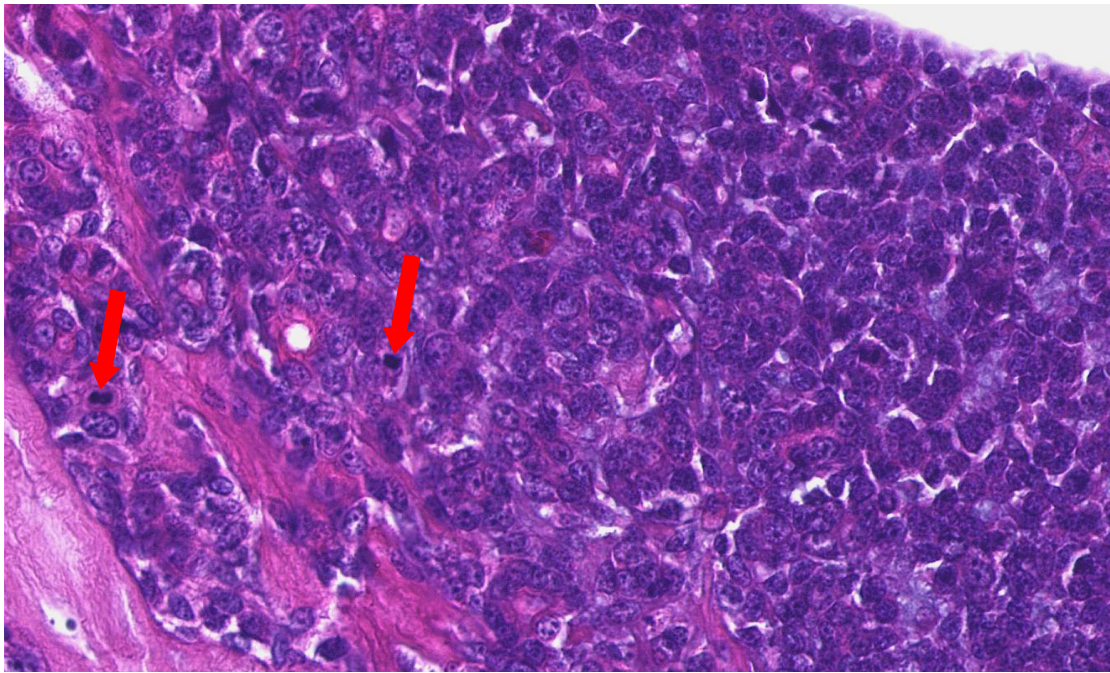


Fig. 7

