

NO. 088 Adenoid cystic carcinoma (AdCC), tubular, cribriform

<ul style="list-style-type: none"> ➤ 正常的 salivary gland (acini 被破壞，只見 duct) 與 tumor 間無明顯的界線，並會侵犯到週邊脂肪(Fig. 1)、肌肉等軟組織。此外，AdCC 常見 perineural invasion。 ➤ 細胞構成有 ductal cells 與 myoepithelial cells。細胞大小通常是 small to medium in size。並有 eosinophilic to clear 的細胞質。細胞核形態呈現 oval to angulated 並有 coarse, basophilic chromatin (較濃染)。Mitosis 不常見。 ➤ 依照組織形態可分為下列三種 types： <ul style="list-style-type: none"> - Tubular pattern： <ul style="list-style-type: none"> a. 內圈由 ductal cells (eosinophilic cytoplasm) 形成管腔 (Fig. 2 yellow line)，外圈由 myoepithelial cells (clear cytoplasm) 圍繞 (Fig. 2 green line) b. 各個 nests 間被 eosinophilic hyalinized stroma 分隔開 (Fig. 2 red ↑) - Cribriform pattern： <ul style="list-style-type: none"> a. Swiss cheese or telephone dial b. Pseudocyst：此為 tumor stroma 的一部分，並非真正的 lumens。內含染色偏藍的 amorphous glycosaminoglycans 或偏紅之 hyalinized basal lamina - Solid pattern：請見 KMUOP-089 之說明。 	<p>標記重點：</p> <ol style="list-style-type: none"> 1. Tubular pattern： <ul style="list-style-type: none"> - Ductal cells (Fig. 2 yellow ↑) - Myoepithelial cells (Fig. 2 green ↑) - Hyalinized stroma (Fig. 2 red ↑) 2. Cribriform pattern： <ul style="list-style-type: none"> - Swiss-cheese appearance (Fig. 3 blue ↑) - Pseudocyst (amorphous glycosaminoglycans (Fig. 4 blue ↑) and hyalinized basal lamina (Fig. 4 red ↑)) 3. Peri/intraneural invasion (Fig. 5 yellow ↑) 4. Invasion of skeletal muscle (Fig. 6 blue ↑) 5. Angulated, basophilic nuclei (Fig. 2 blue ↑)
--	--

Fig. 1

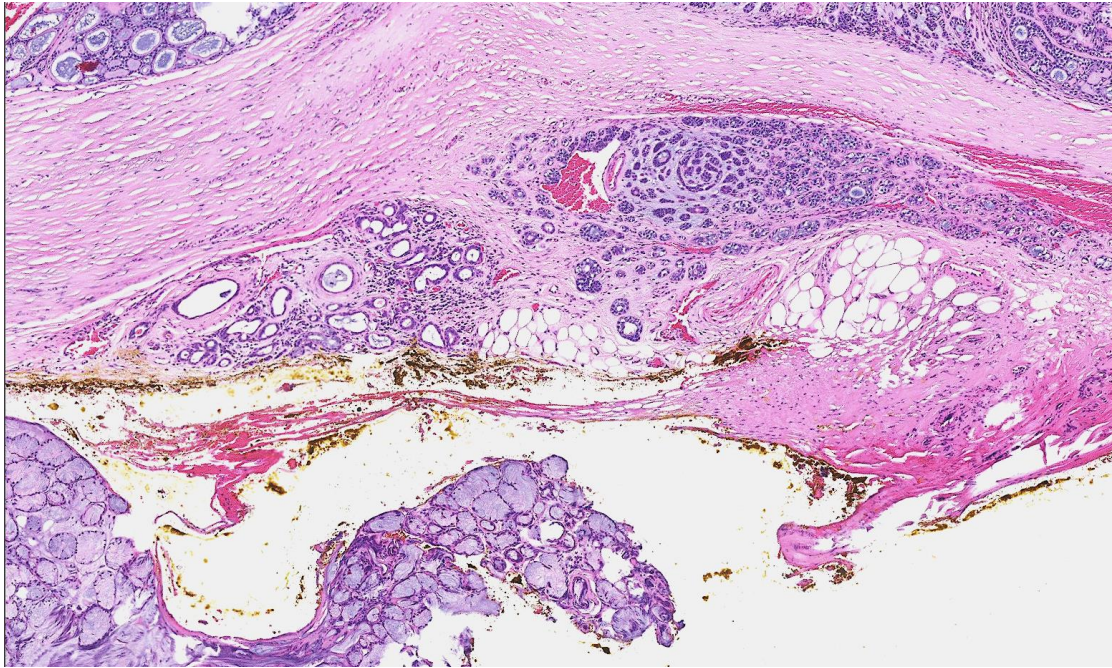


Fig. 2

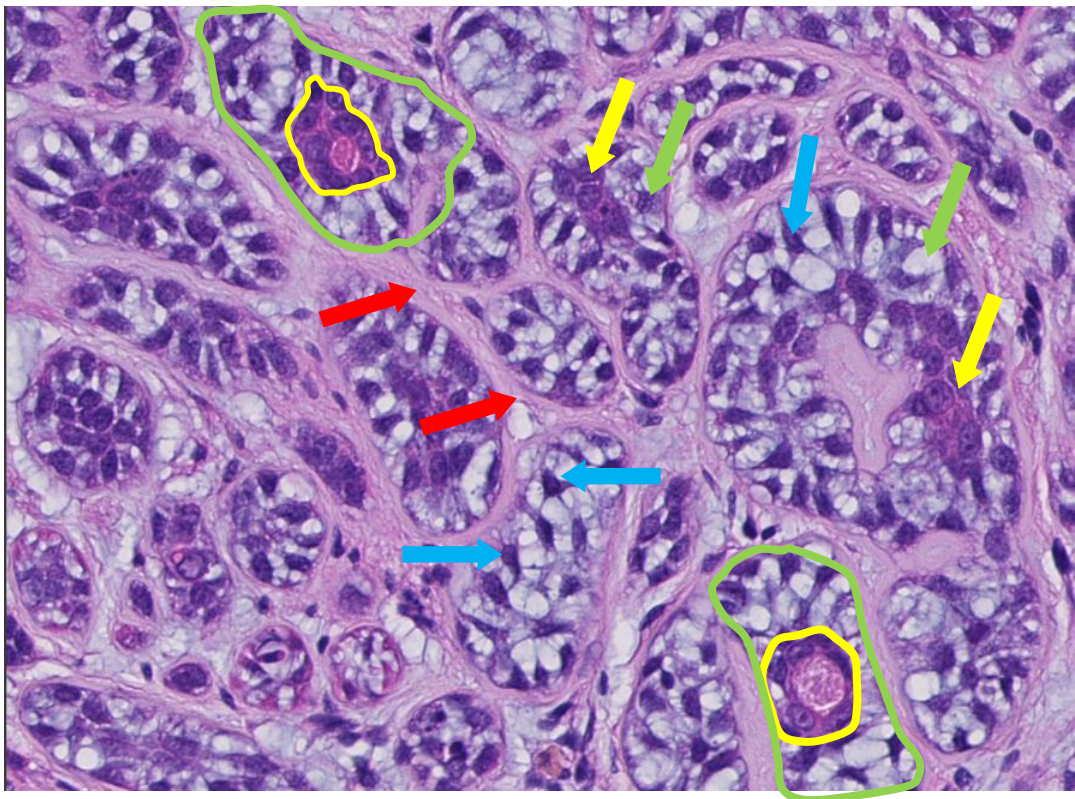


Fig. 3

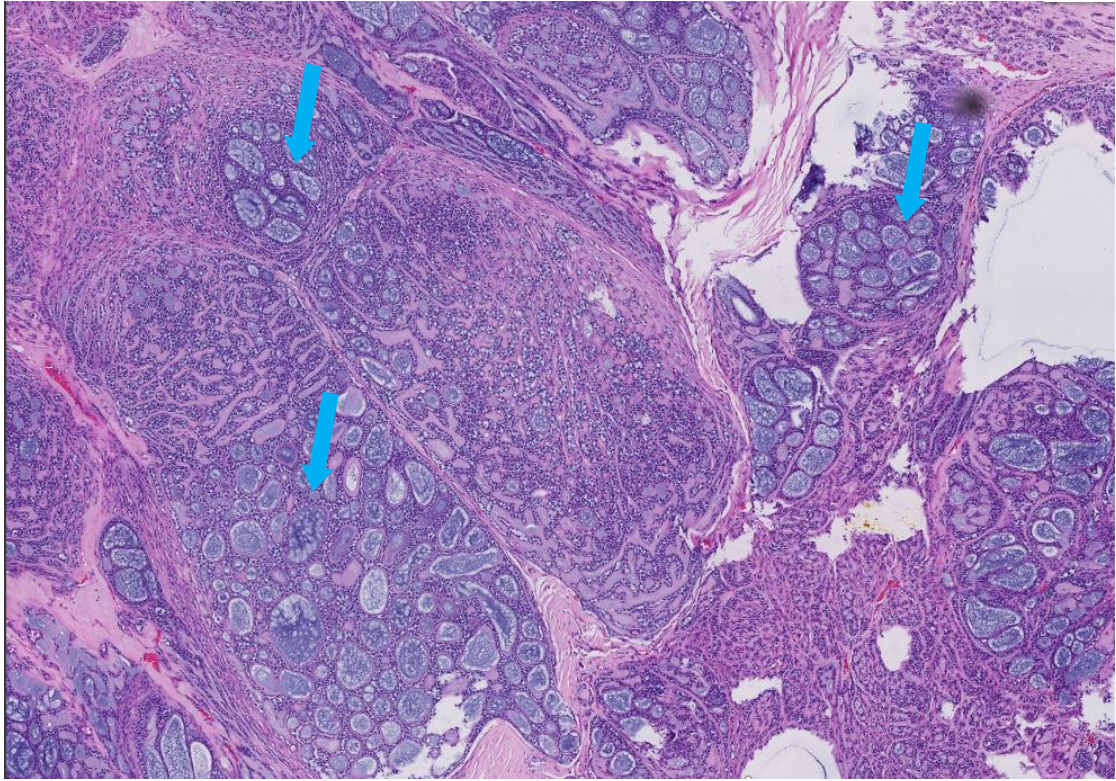


Fig. 4

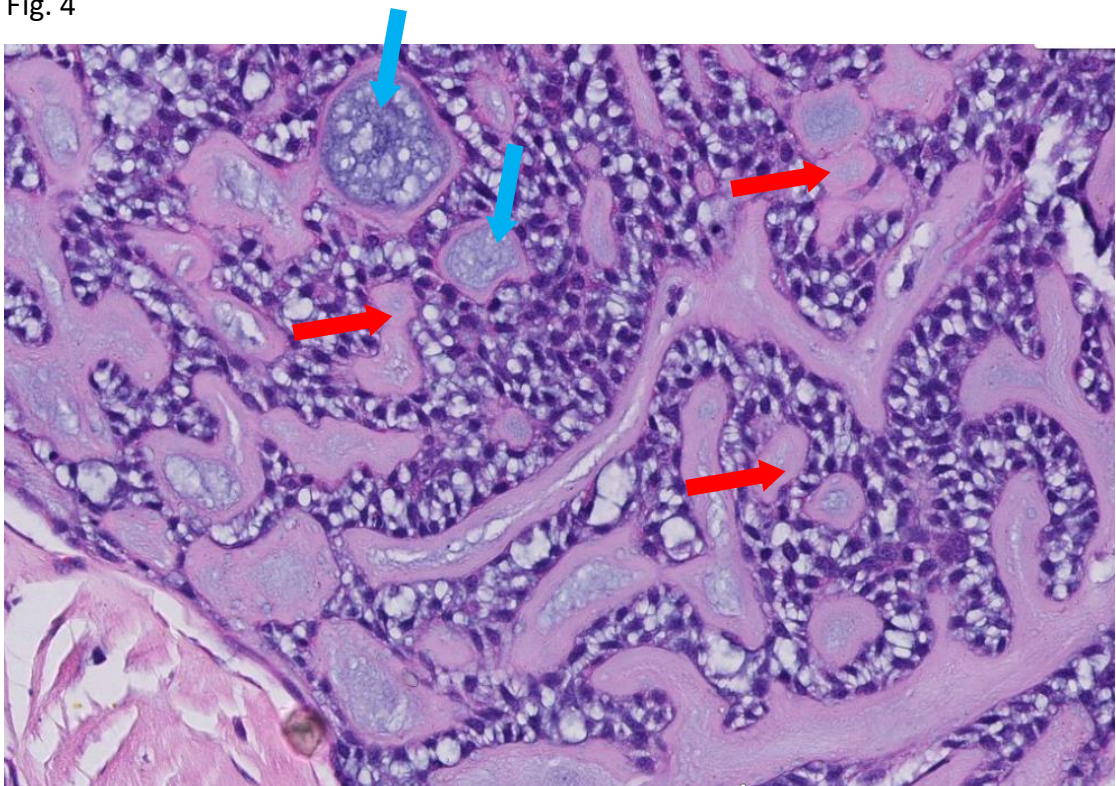


Fig. 5

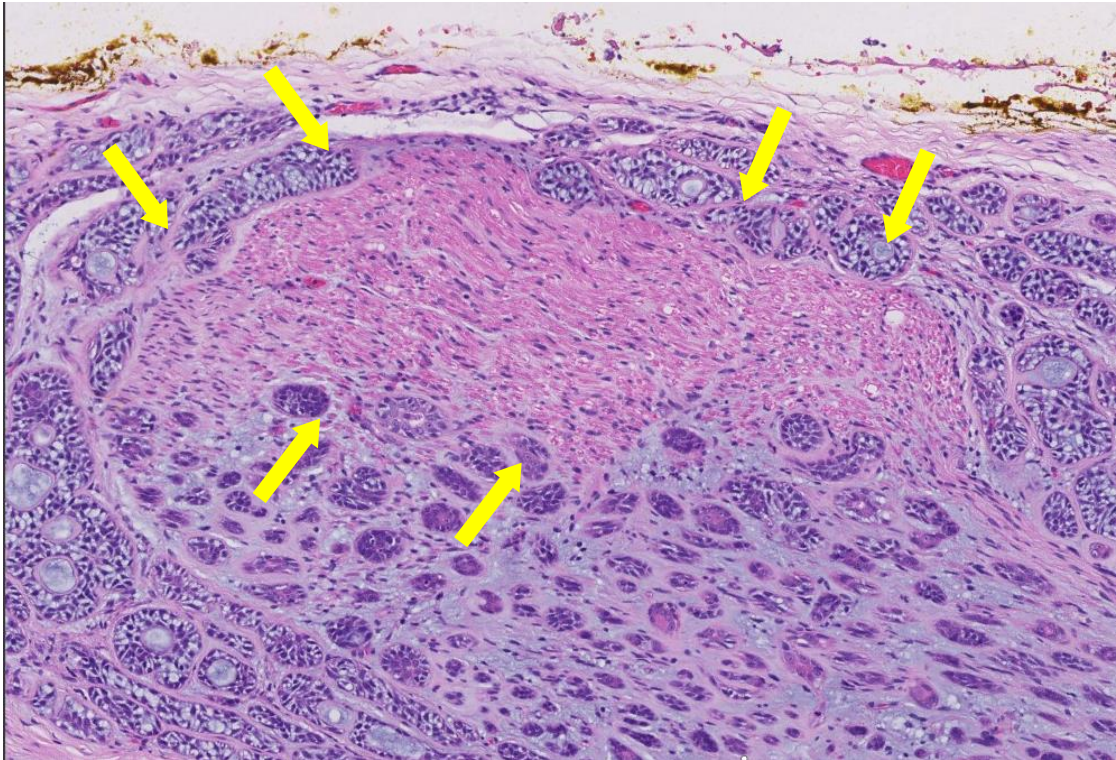


Fig. 6

