

NO. 082 Pleomorphic adenoma

<ul style="list-style-type: none"> ➤ Tumor cell origin : intercalated duct complex · 包含 intercalated duct cell 和 myoepithelial cell · Tumor cell 會聚集成各種不同形狀 : island · duct · sheet · cord · ➤ PA 大多為 well encapsulated · ➤ PA 的腫瘤構成有以下兩種細胞 <ul style="list-style-type: none"> - Ductal cells : 形成單層管腔 (Fig. 2 red circle) · 且 ductal cell 的細胞質偏紅 · 管腔內有時可見 eosinophilic coagulation · - Myoepithelial cell : myoepithelial cell 可以有各種變化包含 spindle, clear, plasmacytoid, basaloid, squamous, sebaceous · 在 PA 中 · 其 myoepithelial cells 會產生不正常增生 · 而使 myoepithelial cells 脫離 ductal cells · 往 stroma 處大量增生 · ➤ Plasmacytoid myoepithelial cell : 細胞質粉紅色 · 核偏一邊 (似 plasma cell) · 也是 myoepithelial cell 的一種變形 · ➤ Stroma 為 myxomatous tissue (偏藍) · 其構成較疏鬆 · 有 spindle-shape cell · 其也是 myoepithelial cell ; 有時可見 hyalinization 的區域 · 此區域看起來較紅 · 均質化 · 本片沒有明顯 hyalinization 的區域 · ➤ Pseudocartilage area : 為 myxomatous tissue 出現 chondroid 或 cartilage 物質 (也可能會有 osteoid substance) 	<p>標記重點 :</p> <ol style="list-style-type: none"> 1. Capsule (Fig. 1 yellow ↑) 2. Normal parotid gland (Fig. 1 blue ↑) 3. Ductal cells (Fig. 2&3 red ↑) 4. Myoepithelial cells (Fig. 2&3 yellow ↑) 5. Plasmacytoid myoepithelial cell (Fig. 4 yellow ↑) 6. Spindle myoepithelial cell (Fig. 2 green ↑) 7. Eosinophilic coagulation (Fig. 3 green ↑) 8. Myxomatous tissue (Fig. 2 blue ↑) 9. Pseudocartilage area (Fig. 5 blue ↑)
--	--

Fig.1

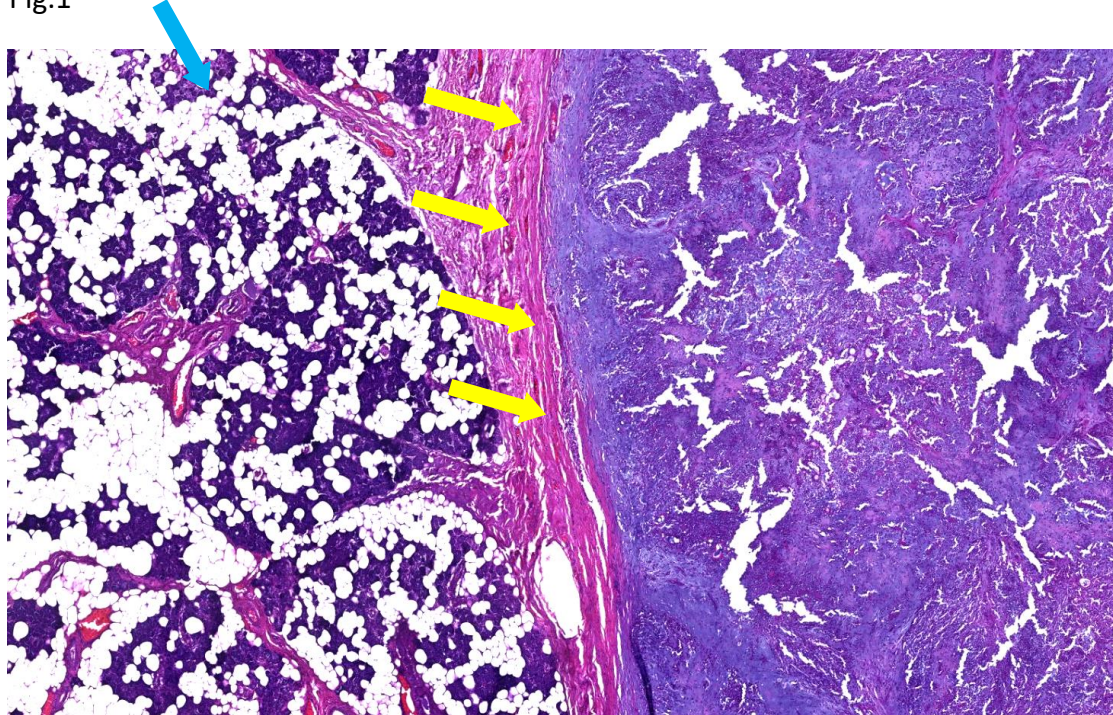


Fig. 2

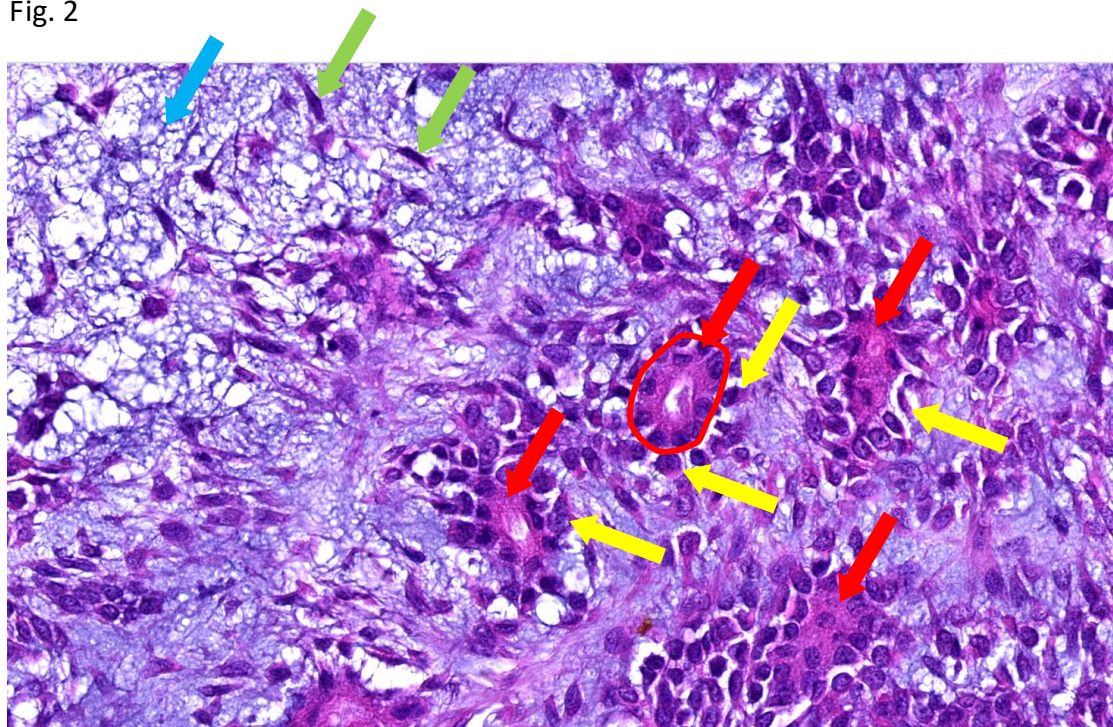


Fig. 3

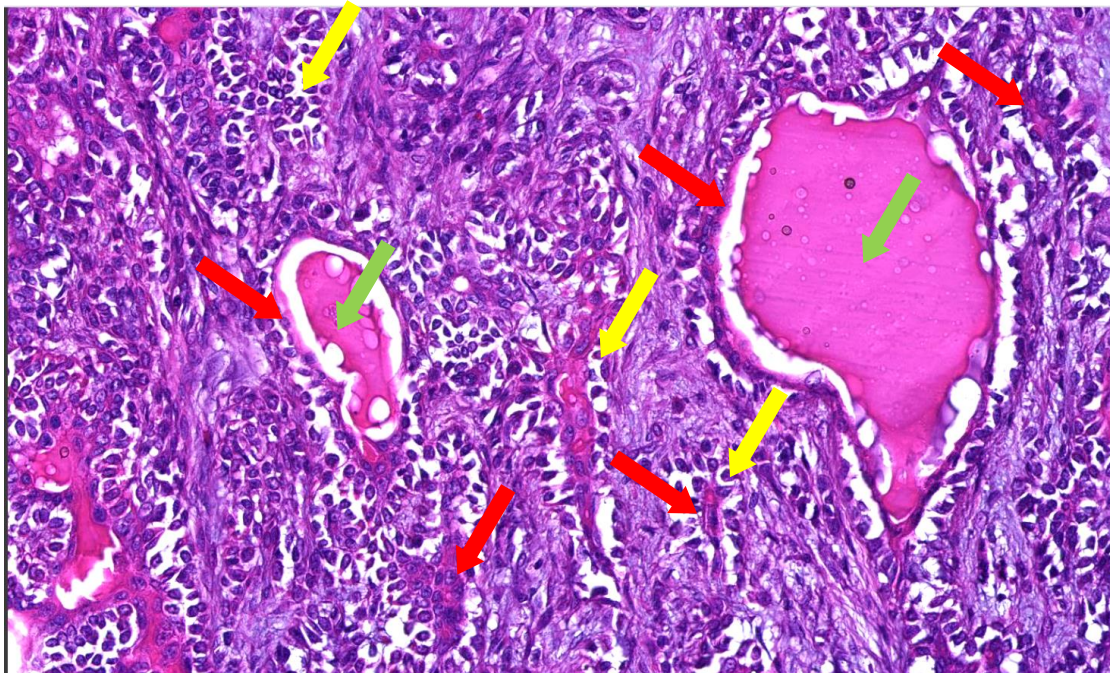


Fig. 4

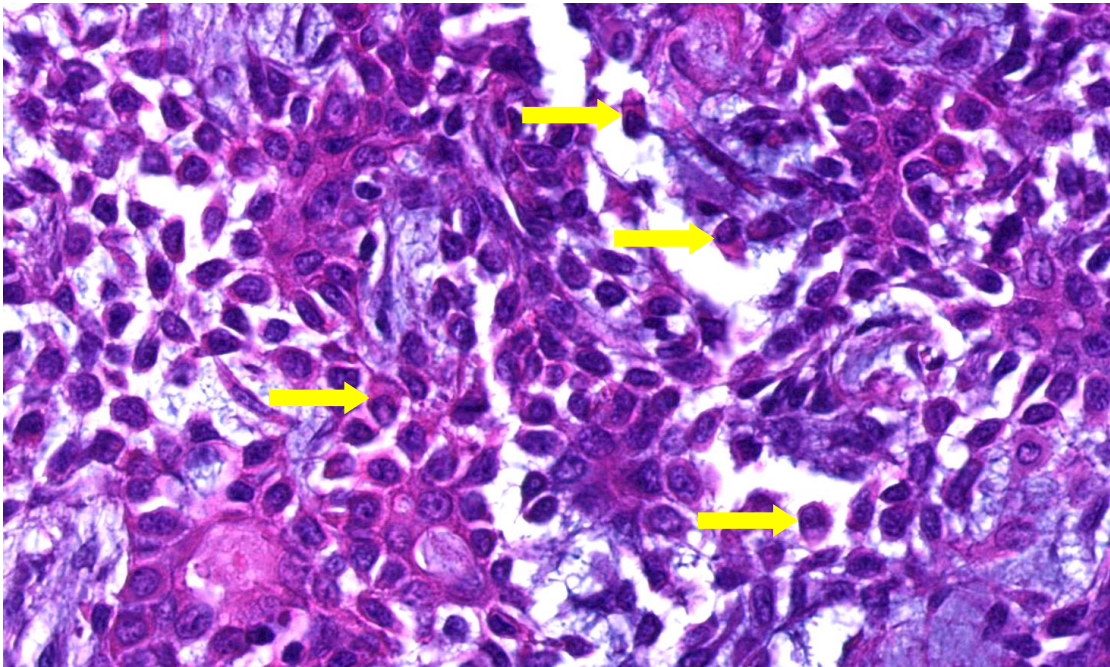


Fig.5

