

## NO. 076 Metastatic tumors to jaw (renal cell carcinoma)

<ul style="list-style-type: none"><li>➤ 此 case 為 clear cell renal cell carcinoma 轉移至顎骨中，並向外生長往牙齦突出。</li><li>➤ 低倍下可見表皮下方充滿一團一團的 clear cells。部分表皮有 ulceration</li><li>➤ 這些 clear cell 的 size 偏大，並有 clear cytoplasm，彼此間會排列成團(alveolar and acinar patterns)。每團 Clear cells 間有許多細小血管作為隔間(network of small, thin-walled blood vessels)</li><li>➤ 在口腔也有許多 tumor 會有 clear cell appearance。此 case 後續是經過 immunohistochemistry(免疫組織化學染色) 確認其為腎臟來源之 tumor</li></ul>	<p>標記重點：</p> <ol style="list-style-type: none"><li>1. Oral epithelium (Fig. 1 blue ↑)</li><li>2. Ulceration (Fig. 1 red ↑)</li><li>3. Clear cells (Fig. 1-3 yellow ↑)</li><li>4. Network of small, thin-walled blood vessels (Fig. 3 green ↑)</li></ol>
---	---

Fig. 1

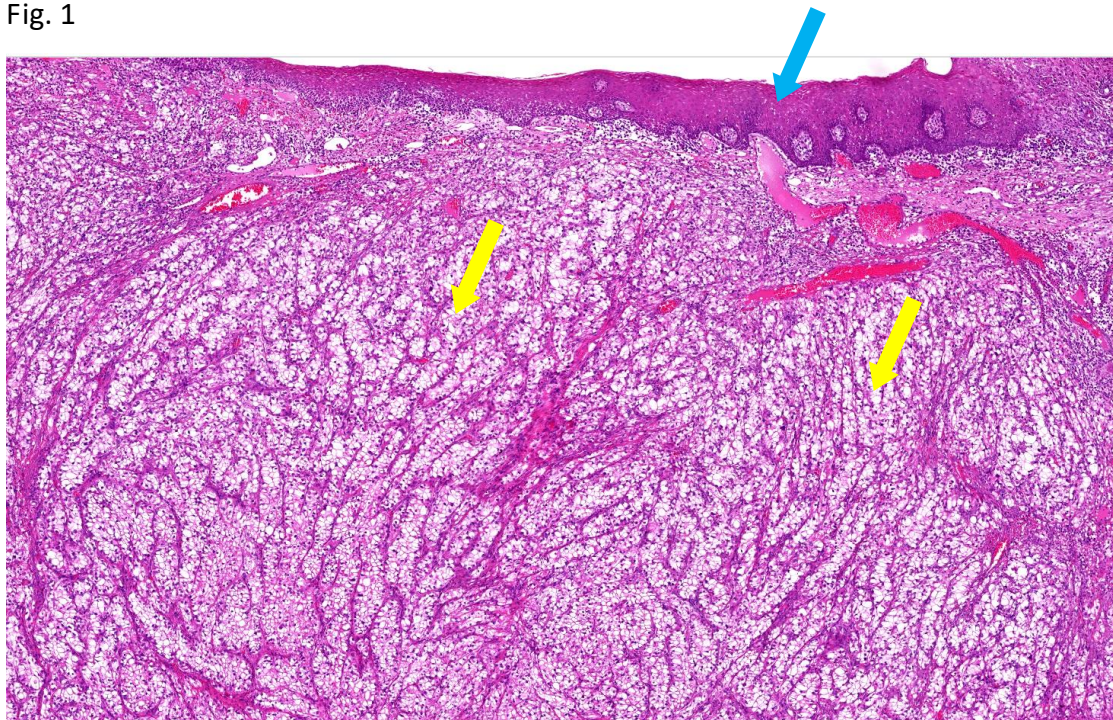


Fig. 2

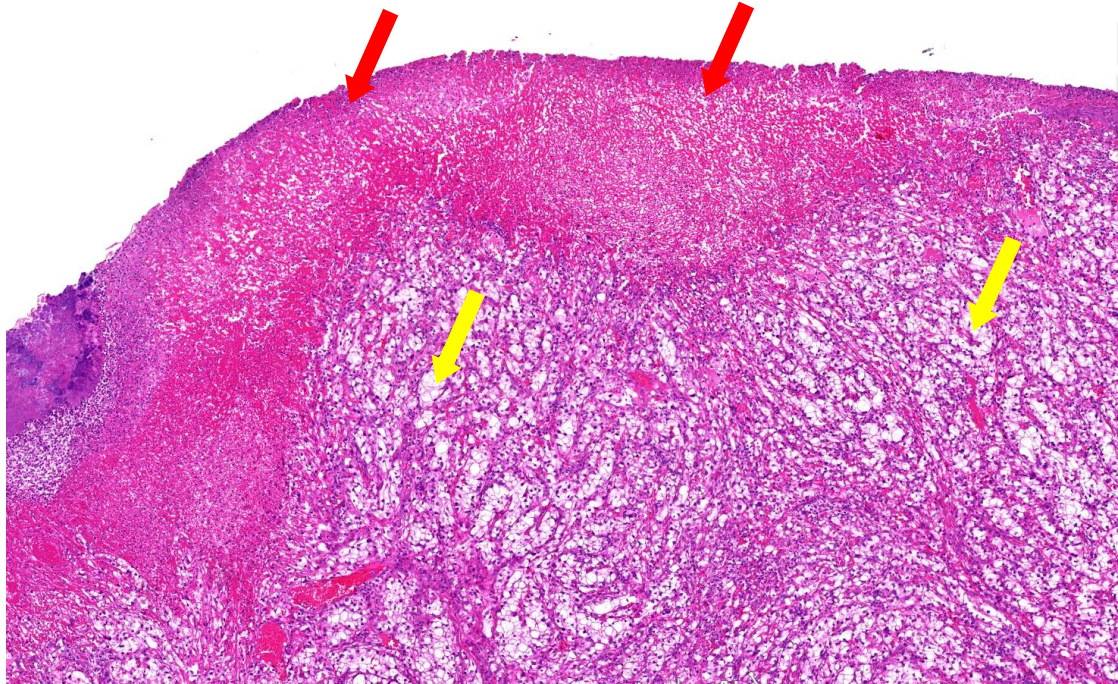


Fig.3

