

NO. 072 Fibrous dysplasia

<ul style="list-style-type: none"> ➤ 此病為正常骨頭內的組織被 cellular fibrous tissue 所取代，並且有許多 branching, curvilinear trabeculae of woven bone 形成。這些骨頭的形態多樣(Chinese characters)。 ➤ 骨與骨間充滿著 fibroblast 和 blood vessels ➤ 這些 woven bone 週邊通常沒有 osteoblast 圍繞(lack of osteoblast rimming of bony trabeculae)或是只有局部出現。 ➤ Bony trabeculae 與週邊的 stroma 間可見 peritrabecular clefting (artificial retraction of the stroma from the bony trabeculae)。 ➤ Ossifying fibroma 與 cemento-osseous dysplasia 這兩者的鈣化物形態較多樣，含 woven bone, lamellar bone and spheroid particles 等形態。FD 則較單一。 	<p>標記重點：</p> <ol style="list-style-type: none"> 1. Woven bone 區的 bone trabeculae (C-shape / Chinese character appearance) (Fig. 1&2 blue ↑) 2. Cellular fibrous stroma (Fig. 1&2 red ↑) 3. Osteoblast (Fig. 3 yellow ↑)/ osteocytes (Fig. 3 green ↑) 4. Osteoclast (Fig. 3 blue ↑) 5. Fibroblast (Fig. 3 red ↑) 6. Peritrabecular clefting (Fig. 2 green ↑)
---	---

Fig. 1

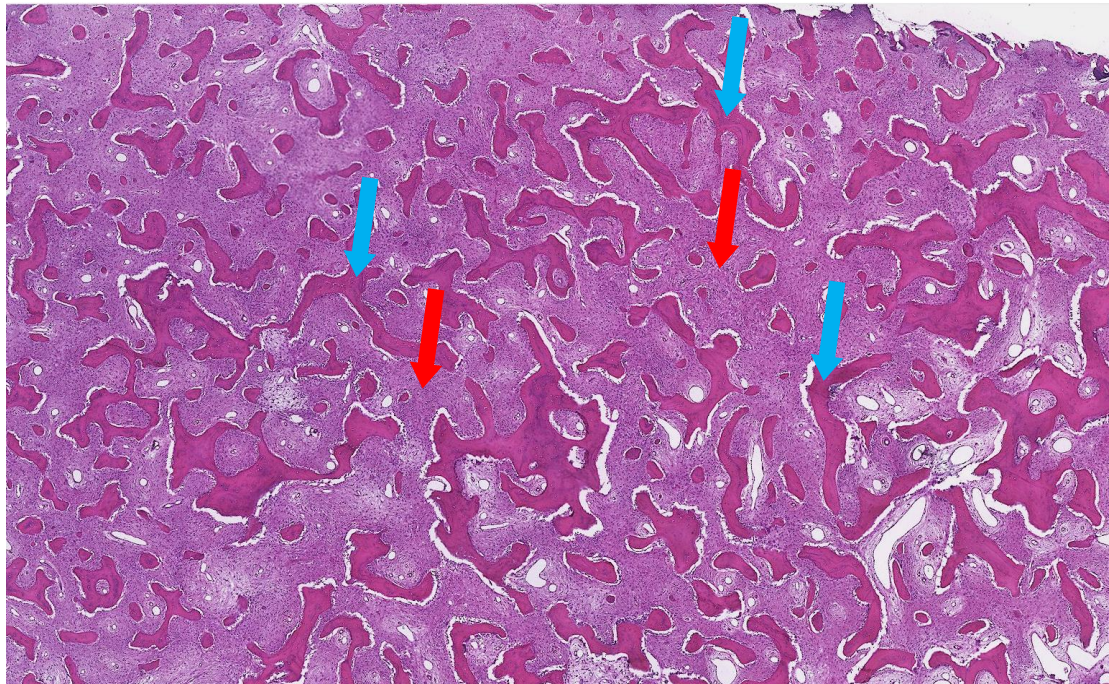


Fig. 2

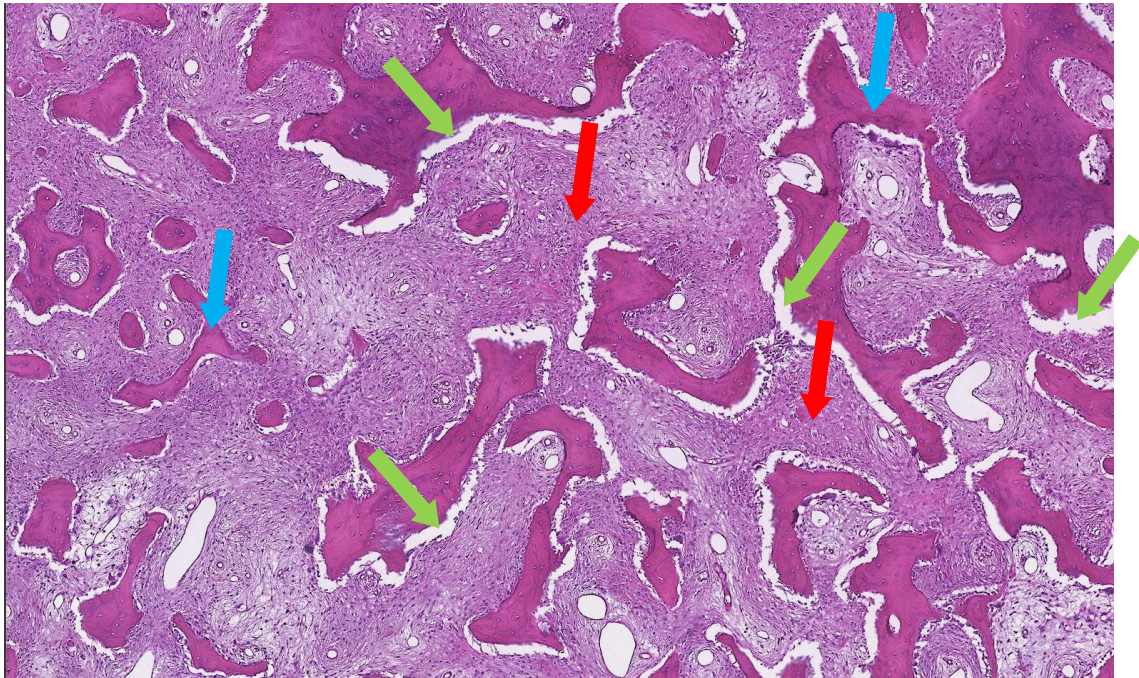


Fig. 3

