

NO. 003 Moderate, severe epithelial dysplasia, and carcinoma in situ

<ul style="list-style-type: none"> ➤ 此片病變在表皮層，basement membrane 保持完整，connective tissue 正常（與侵襲性癌分別），故 carcinoma in situ 也稱為 intraepithelial carcinoma。 ➤ 低倍下可發現 dysplastic epithelium 有以下特徵： <ol style="list-style-type: none"> a. Bulbous or teardrop-shaped rete ridges (Fig 1. blue ↑; red ↑ 為正常 rete ridges) b. Loss of polarity c. Keratin or epithelial pearls (在非表皮層出現) d. Loss of typical epithelial cell cohesiveness (細胞彼此抓不緊) (Fig 3. green ↑) ➤ 上皮細胞出現 dysplastic change 有以下特徵： <ol style="list-style-type: none"> a. Enlarged nuclei and cells b. Increased nuclear-to-cytoplasmic ratio c. Hyperchromatic nuclei (細胞核濃染) d. Pleomorphic nuclei and cells (多形性) e. Dyskeratosis (不正常的角化) f. Increased mitotic activity (有絲分裂增加) g. Abnormal mitotic figure (不正常的有絲分裂) h. Large and prominent nucleoli (核仁明顯) (Fig 4. yellow ↑) ➤ 依照 dysplastic epithelial cells 占據的上皮層比例可分成以下三種： <ol style="list-style-type: none"> a. Dysplastic cells 占下 1/3 層：mild epithelial dysplasia b. Dysplastic cells 占 1/2 層：moderate epithelial dysplasia c. Dysplastic cells 占 2/3 層：severe epithelial dysplasia ➤ Carcinoma in situ 定義為由上到下 (top to bottom) 的上皮細胞都出現 dysplastic change。 	<p>標記重點：</p> <ol style="list-style-type: none"> 1. Basement membrane 完整 (SCC 的 basement membrane 不完整，有向下 invasion 的現象) (Fig 2. Yellow line) 2. 由上到下 (top to bottom) 的上皮細胞都出現 dysplastic change (Fig 2. red ↑) 3. 5 個特徵必標： <ol style="list-style-type: none"> a. Pleomorphism (Fig 3. 中可見細胞型態變異大) b. Hyperchromatism (Fig 3. red ↑) c. Individual cell keratinization (Fig 3. blue ↑) d. Abnormal mitosis (Fig 4. red ↑) e. N/C ratio 增 (Fig 4. blue ↑)
---	---

Fig 1.

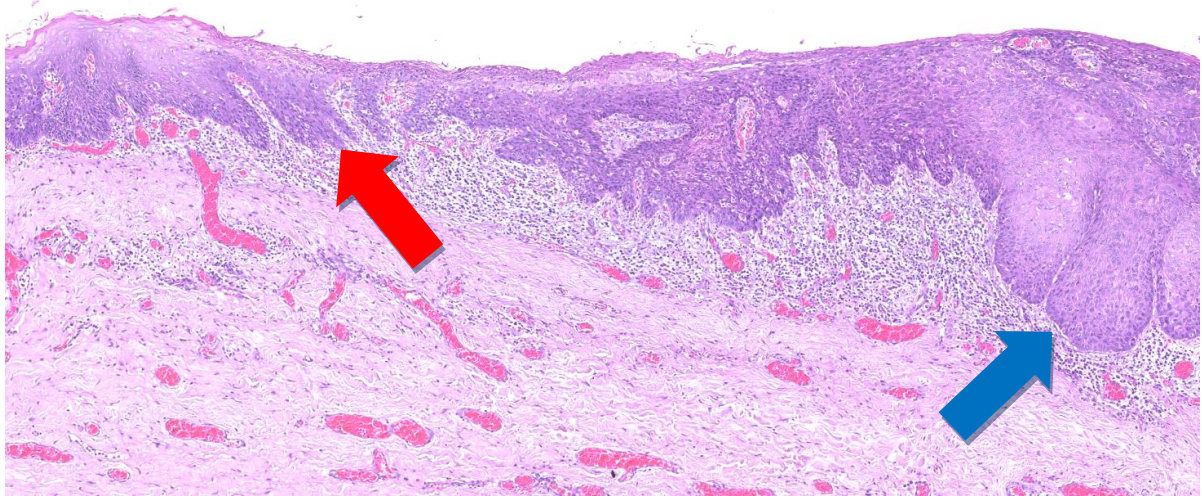


Fig 2.

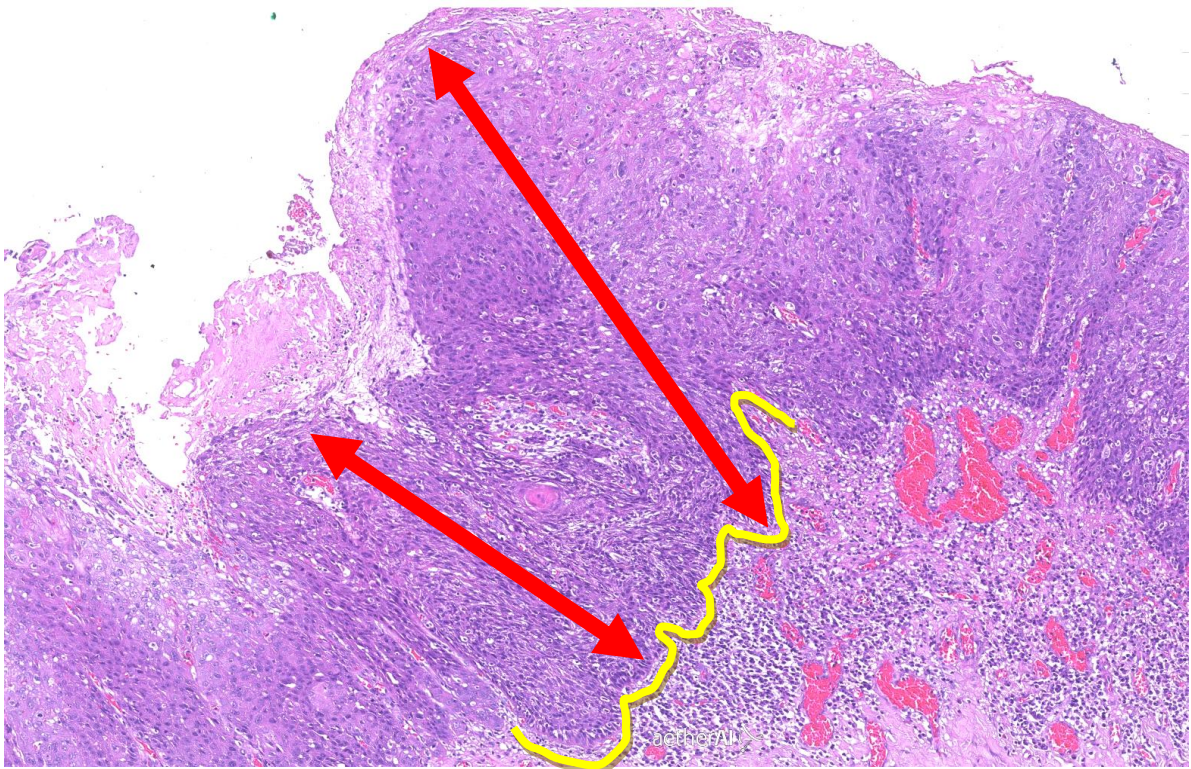


Fig 3.

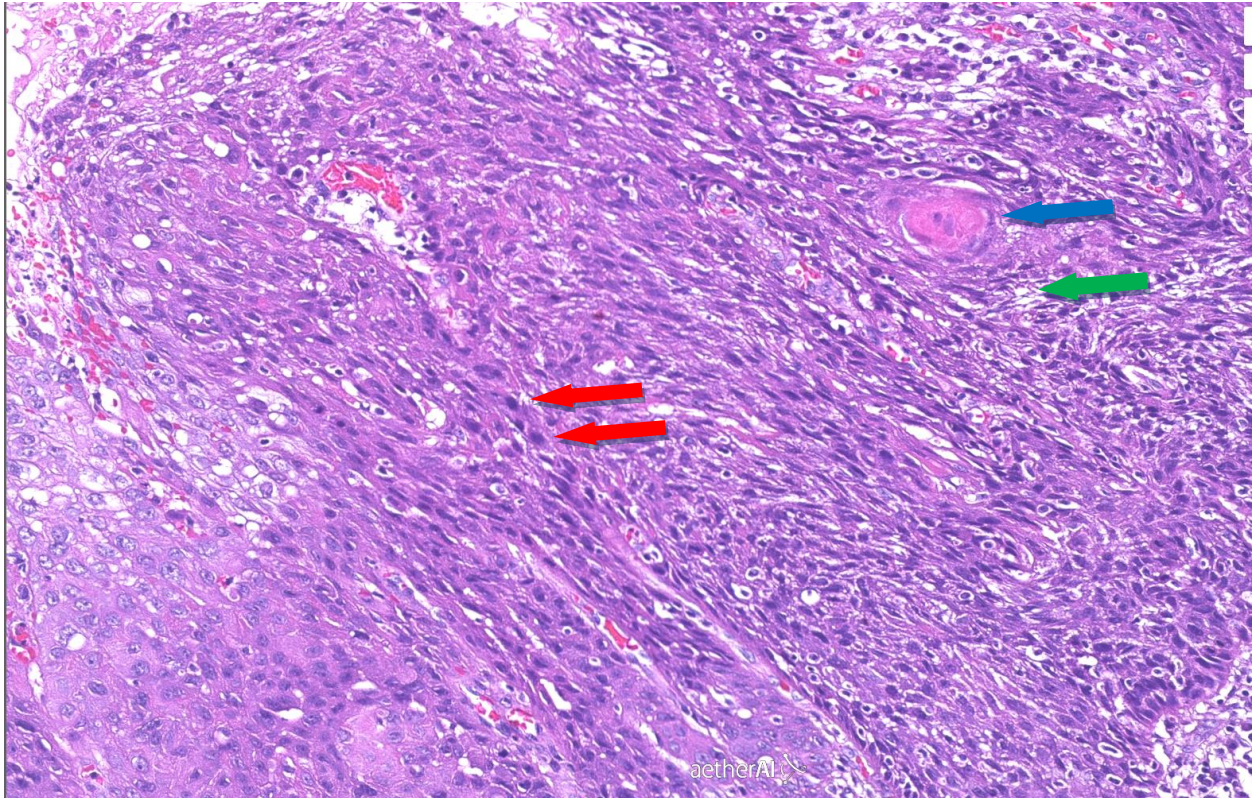


Fig 4.

