

NO. 093 Sialolithiasis

<ul style="list-style-type: none">➤ 低倍下可見口腔上皮下之 salivary duct 有擴張的情形(dilation of duct)。➤ Duct 中間有紫色的碎片即為結石 (sialolith) · 因未進行脫鈣處理 · 導致鈣化硬組織無法完整收下。➤ Ductal epithelium 可能會出現 squamous、mucous 或 oncocytic metaplasia。本片中可見 mucous 與 oncocytic metaplasia。➤ 可見許多發炎細胞與細菌的菌落。	<p>標記重點：</p> <ol style="list-style-type: none">1. Oral epithelium (Fig. 1 red ↑)2. Sialolith (Fig. 1 yellow ↑)3. Inflammatory cells with non-specific bacterial colonies (Fig. 1&2 blue ↑)4. Mucous metaplasia (Fig. 2 red ↑)5. Oncocytic metaplasia (Fig. 3 green ↑)
---	---

Fig. 1

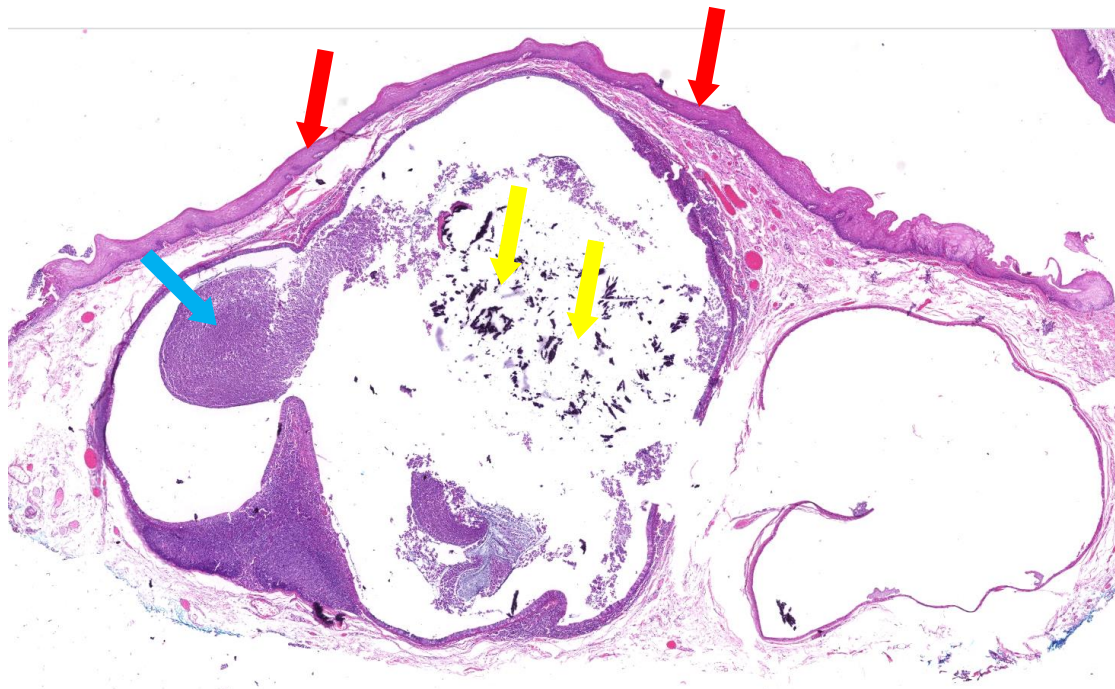


Fig. 2

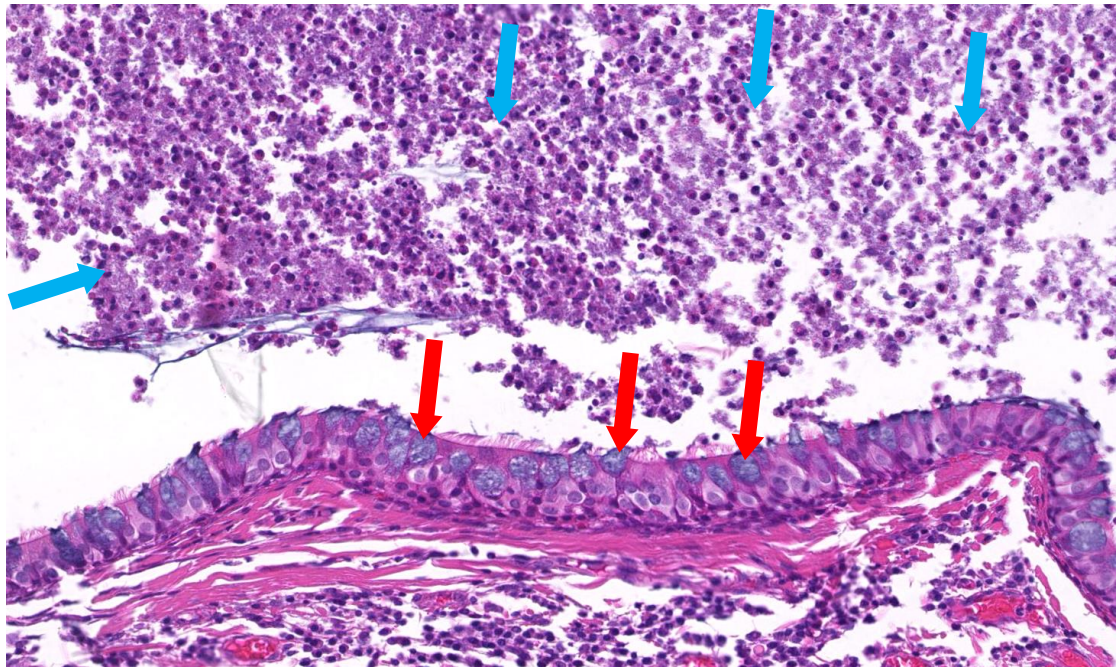


Fig. 3

