

NO. 092 Sialadenoma papilliferum

| | |
|--|--|
| <ul style="list-style-type: none"> ➤ 低倍下，可見表面之 squamous epithelium 呈現 papillary、verruroid 狀向外(exophytic)增生。上皮呈現 hyperparakeratosis 與 acanthosis。 ➤ 表皮下方之 ductal cells 也呈現向下(endophytic)papillary 狀增生，並與上方 squamous epithelium 相連。 ➤ Ductal cells 由兩層細胞構成： <ul style="list-style-type: none"> a. Outer or luminal cells: tall columnar cells 並有 eosinophilic granular cytoplasm b. Inner or basal cells: cuboidal cells with eosinophilic granular cytoplasm ➤ Fibrous stroma 中常見大量慢性發炎細胞浸潤(lymphocytes、plasma cells)。 | <p>標記重點：</p> <ol style="list-style-type: none"> 1. Papillary、verruroid proliferation of the surface epithelium (Fig. 1 red line) 2. Hyperparakeratosis (Fig. 1 yellow ↑) 3. Acanthosis (Fig. 1 green ↑) 4. Endophytic、papillary proliferation of the ductal cells (Fig. 1&2 blue ↑) 5. Outer/luminal cells (Fig. 3 yellow ↑) 6. Inner/basal cells (Fig. 3 green ↑) 7. Basement membrane (Fig. 3 red line) |
|--|--|

Fig. 1

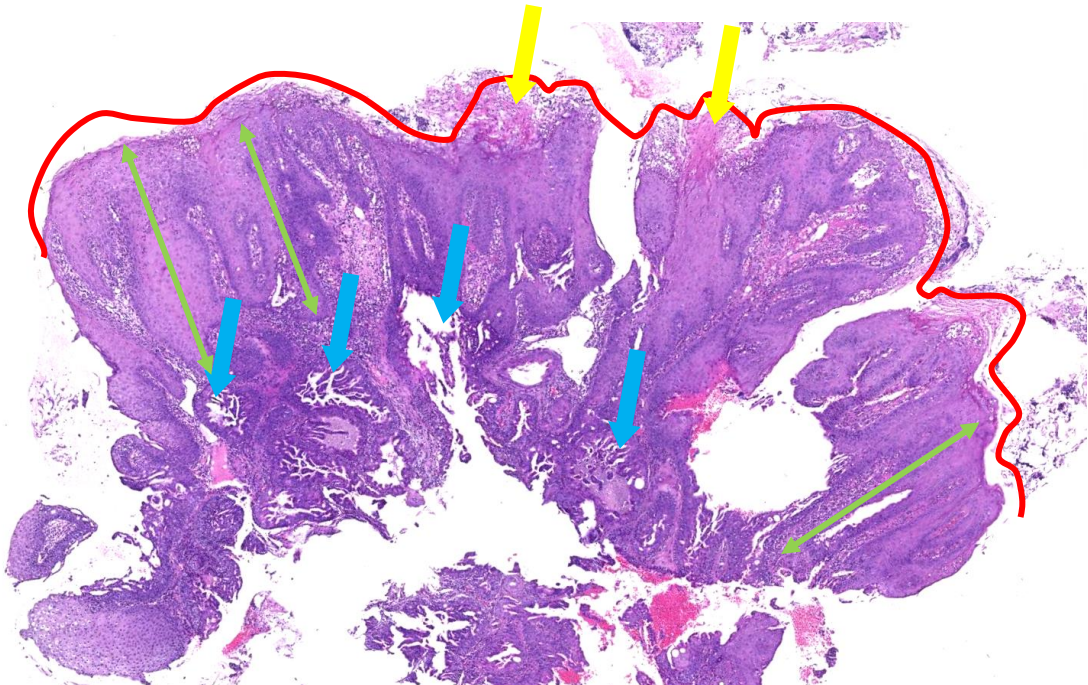


Fig. 2

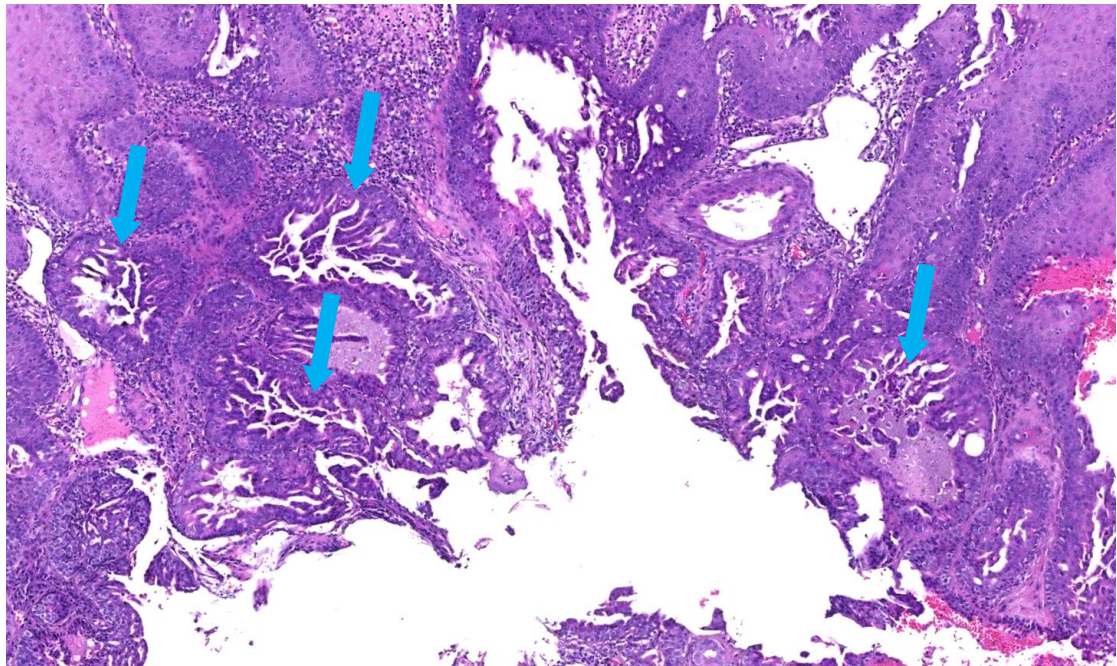


Fig. 3

