

NO. 079 Verruciform Xanthoma

<ul style="list-style-type: none"> ➤ 病灶區呈現火焰狀的外觀(Fig. 1 red ↑) · 可與旁邊正常上皮比較(Fig. 1 yellow ↑)。 ➤ 表皮成火燄狀 · 包括 basal cell hyperplasia · hyperparakeratosis。 ➤ 因表皮向下增生的關係 · rete peg 尖尖的且都增生到同一深度(Fig. 1 green ↑) · connective tissue papilla 很接近表皮表面(Fig. 1 blue ↑) · 下面有 lymphocyte 的浸潤 ➤ 觀察重點在於 connective tissue papilla · 有許多圓形 · cytoplasm 淺的細胞 · 此即為 macrophage with foamy (泡沫狀) cytoplasm · 也可稱為 xanthoma cell (因 macrophage 吃掉脂肪後形成)。 	<p>標記重點：</p> <ol style="list-style-type: none"> 1. Papillary · acanthotic surface epithelium covered by a thickened layer of parakeratin (Fig. 1 red ↑) 2. Verrucous appearance (Fig. 1 red ↑) 3. Rete ridges are elongated to a uniform depth (Fig. 1 black dotted line) 4. Xanthoma cells (Fig. 2 blue ↑)
--	---

Fig. 1

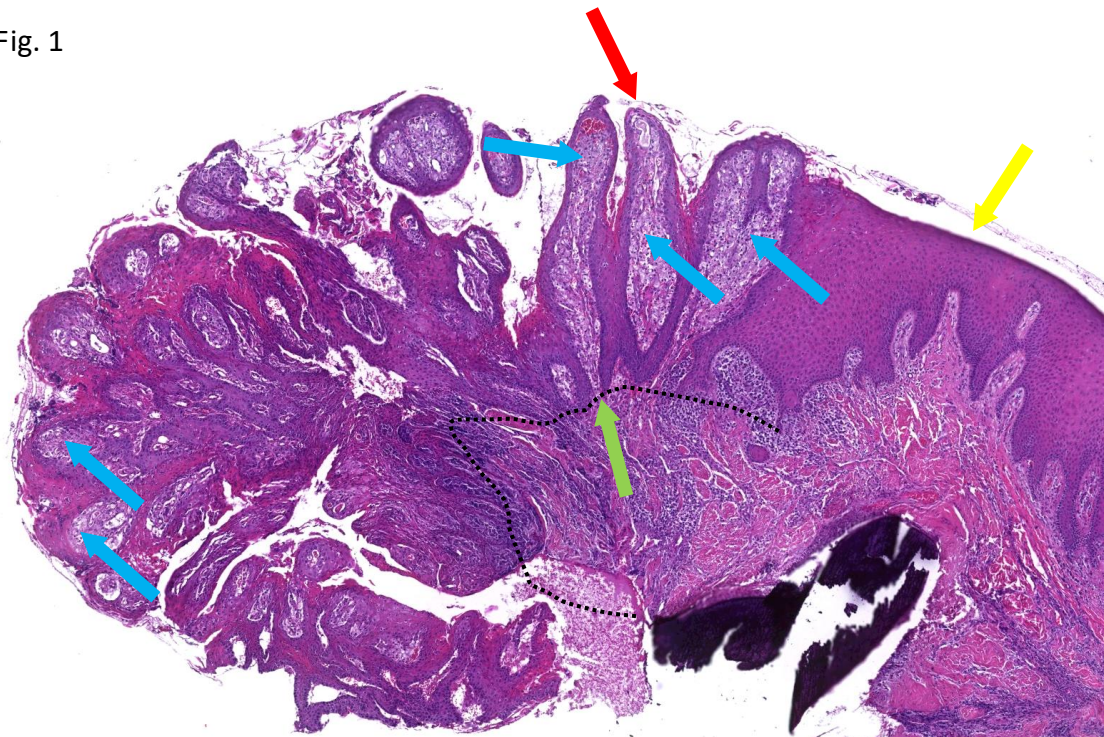


Fig. 2

