

**NO. 047 Pyogenic granuloma**

<ul style="list-style-type: none"><li>➤ 低倍下，呈現 dome shape，橢圓形突出。</li><li>➤ 表皮不連續，且有 ulceration surface and epithelium hyperplasia。</li><li>➤ Highly vascular proliferation that resembles granulation tissue (fibrous tissue, inflammatory infiltrate, proliferation of vessels).</li><li>➤ 於新生血管可見到不成熟的 endothelial cell，很像 hemangioma。但背景為 granulation tissue。</li><li>➤ 可能會有 regenerative epithelium，因組織有自我修復能力</li></ul>	<p>標記重點：</p> <ol style="list-style-type: none"><li>1. Ulceration (Fig. 1 red line)</li><li>2. Epithelium hyperplasia (Fig. 1&amp;2 blue ↑)</li><li>3. Granulation tissue with infiltration of inflammatory cell (Fig. 3 green ↑)</li><li>4. Immature endothelium cell (Fig. 3 red ↑)</li><li>5. Endothelium-lined channels are formed that are engorged with RBC (Fig. 3 yellow ↑)</li></ol>
--	--

Fig. 1

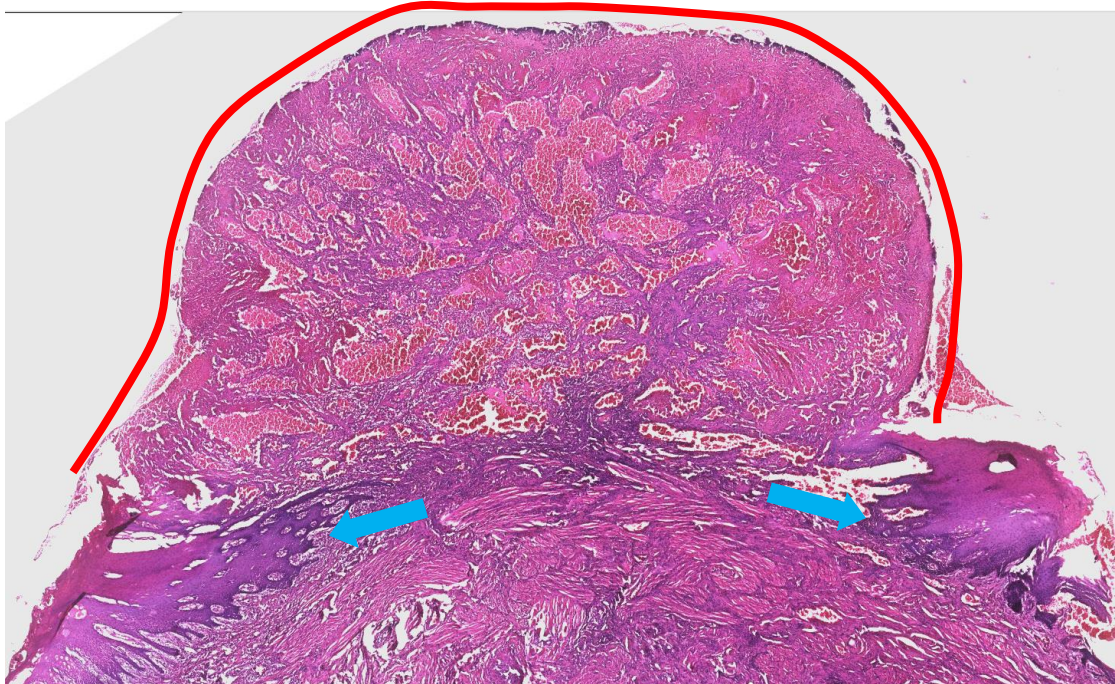




Fig. 2

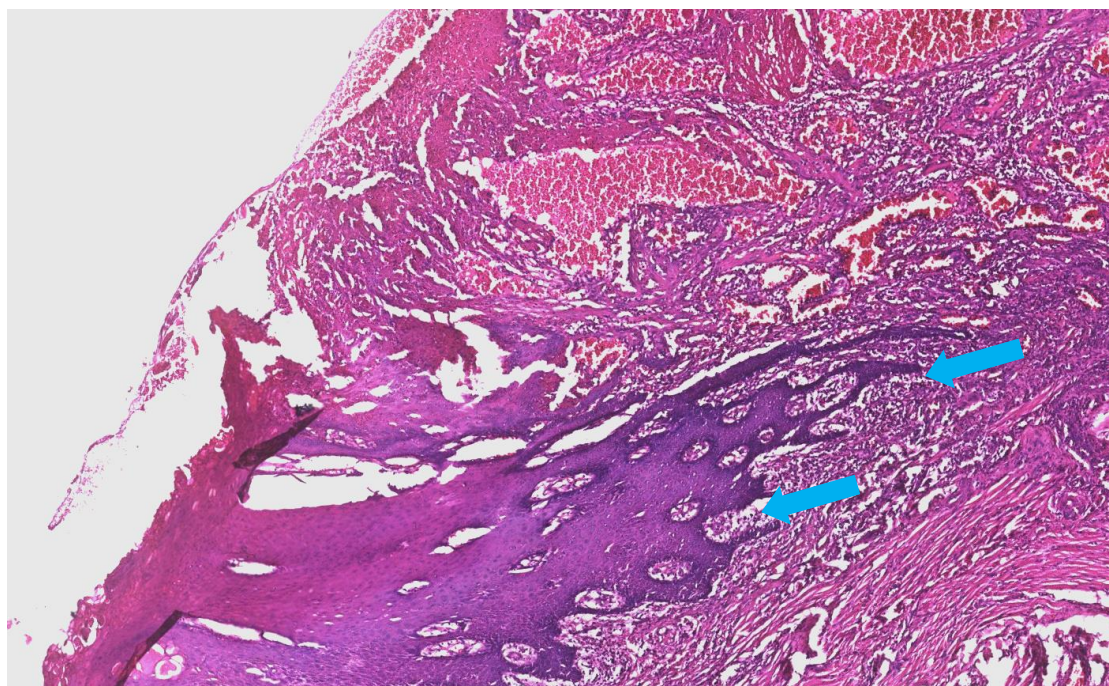


Fig. 3

