

NO. 038 Adenomatoid Odontogenic Tumor (AOT)

<ul style="list-style-type: none">➤ 有很厚的 capsule 。➤ Tumor 內 fibrous stroma 很少 。➤ Duct-like structure : 此管狀構造為單層 high-columnar cell 所圍起, 但不具分泌功能。且高柱狀細胞有 reverse polarity 的現象, 故也稱這些細胞為 preameloblast 。➤ Rosette-like structure : 也是由高柱狀細胞所圍起, 但沒有管腔, 而是一層層細胞, 像玫瑰花瓣一樣 。➤ Swirl appearance : 由 spindle-shape cell 排成漩渦狀, 又稱 whorled material 。➤ Foci of calcification : 鈣化的 material 呈現紫色, 其形態似 dentin (dentinoid) 或 cementum 。	<p>標記重點 :</p> <ol style="list-style-type: none">1. Fibrous capsule (Fig. 1 red ↑)2. Duct-like structure (preameloblast) (Fig. 2 blue ↑)3. Rosette-like structure (Fig. 2 red ↑)4. Swirl appearance (spindle-shape cell) (Fig. 3 yellow★)5. Foci of calcification (Fig. 2&3 green ↑)
---	---

Fig.1

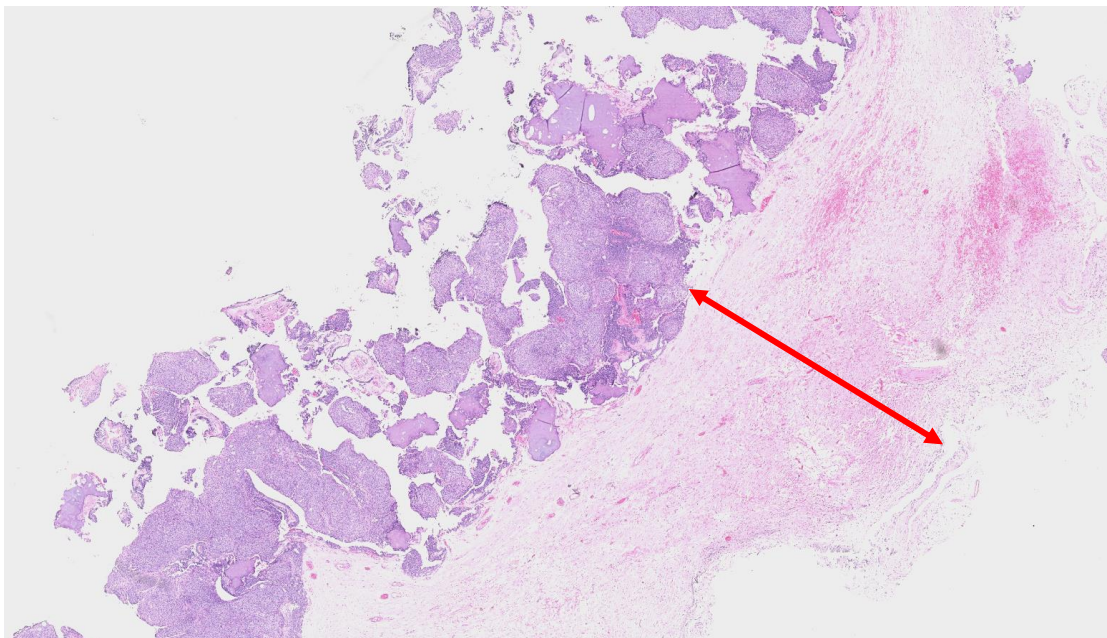


Fig. 2

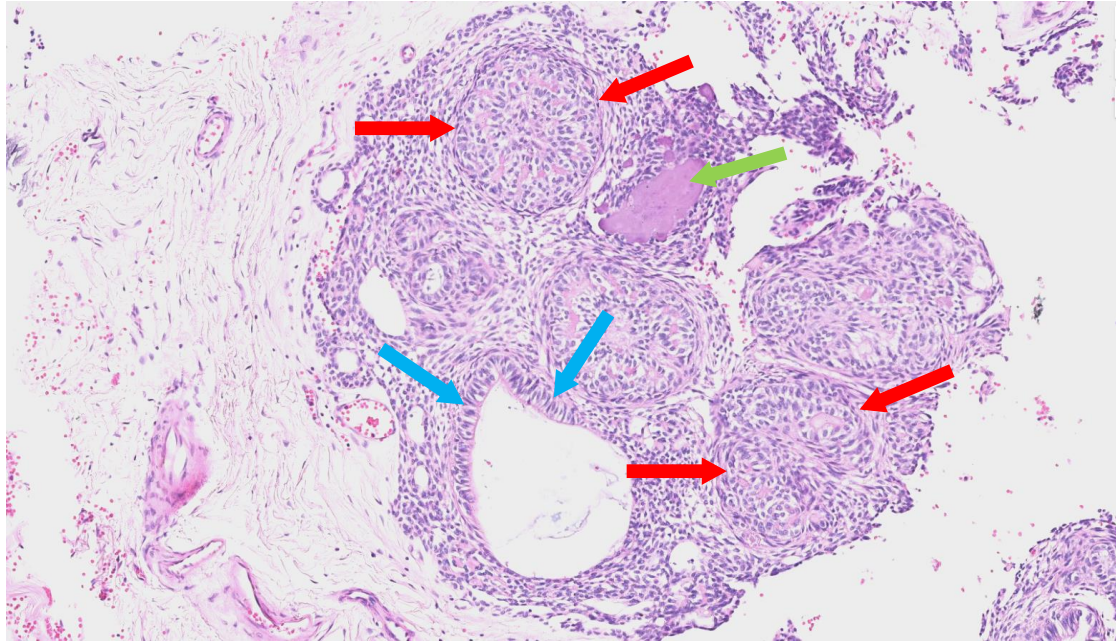


Fig. 3

