

## NO. 085 Polymorphous low grade adenocarcinoma

\*2017 WHO 更名為 Polymorphous adenocarcinoma

<ul style="list-style-type: none"> <li>➤ 雖然大致為 well circumscribed，但並沒有 capsule 包圍。</li> <li>➤ 被認為是 intercalated/terminal duct 來源。與 AdCC 相同，腫瘤細胞也是由 ductal cell 與 myoepithelial cell 構成。</li> <li>➤ 低倍下，可見腫瘤大致呈現 well circumscribed，表面有 oral epithelium 覆蓋，並可見殘存之 normal minor salivary gland。殘餘之 acini 與 duct 被腫瘤細胞包圍 (gland and duct entrapment)。</li> <li>➤ 與 AdCC 相同，其也喜歡侵犯神經，常見 perineural invasion。</li> <li>➤ 其 tumor growth pattern 多變，包含 lobular、trabecular、cribriform、solid、papillary-cystic 等。</li> <li>➤ 可見腫瘤呈現同心圓狀排列 (concentric layering)，中心 (central nidus) 是 small nerve。</li> <li>➤ 常見腫瘤細胞以 linear, single-file cell infiltration (indian-filing)。</li> <li>➤ 高倍下，細胞長相都很一致 (uniform)。細胞質的顏色較淡紅，細胞核的形態較圓、顏色較淡 (vesicular nuclear chromatin)，不像 AdCC 有細胞核呈現 angulated 且 hyperchromatic nuclei。</li> </ul>	<p>標記重點：</p> <ol style="list-style-type: none"> <li>1. Oral epithelium (Fig. 1 blue ↑)</li> <li>2. Gland and duct entrapment (Fig. 1&amp;2 red ↑)</li> <li>3. Tubular structure (Fig. 3 green ↑)</li> <li>4. Perineural invasion (Fig. 4&amp;5 yellow ↑)</li> <li>5. Cribriform pattern (Fig. 6 blue ↑)</li> <li>6. Concentric layering (Fig. 7 red lines)</li> <li>7. Central nidus (Fig. 7 yellow ↑)</li> <li>8. Linear, single-file cell infiltration (Fig. 8 green ↑)</li> </ol>
---	--

Fig. 1

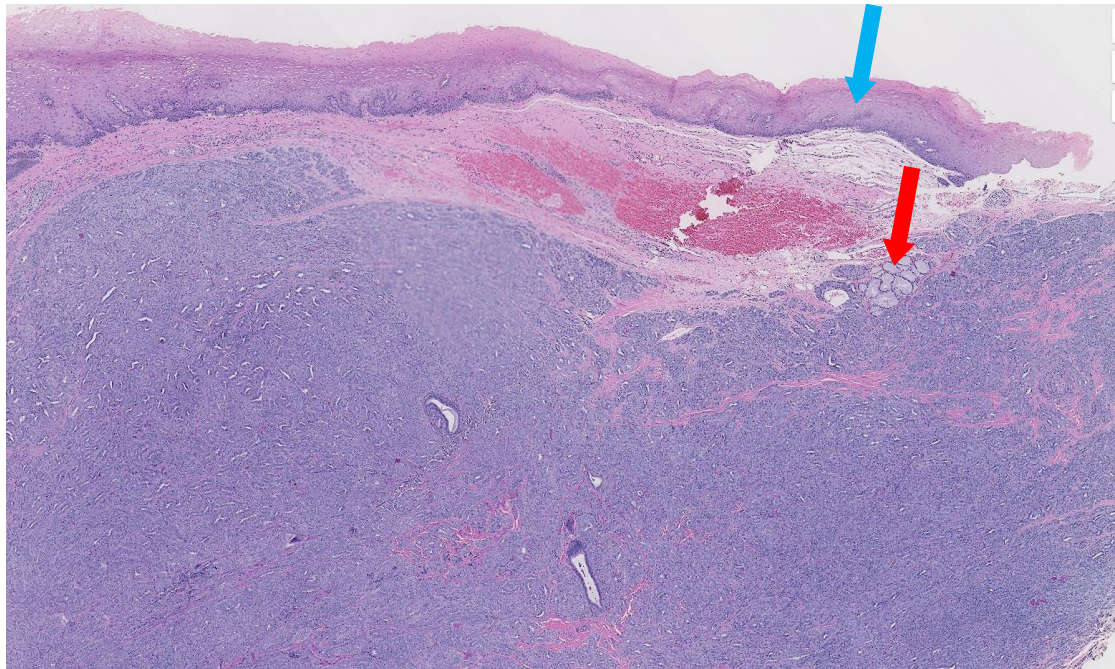


Fig. 2

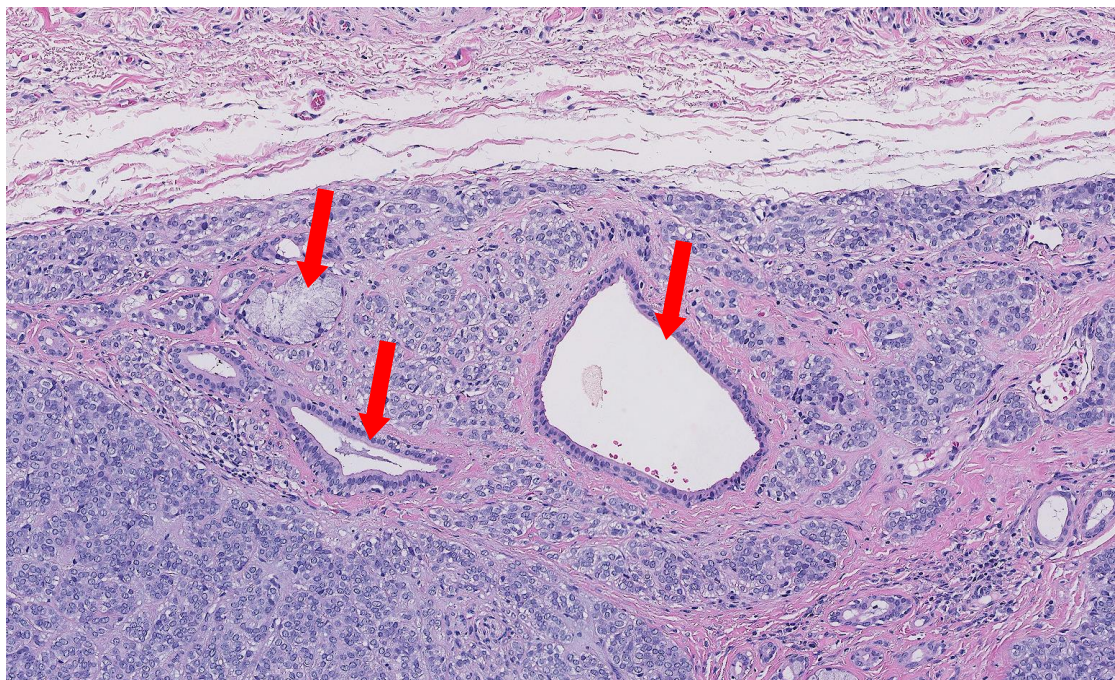


Fig. 3

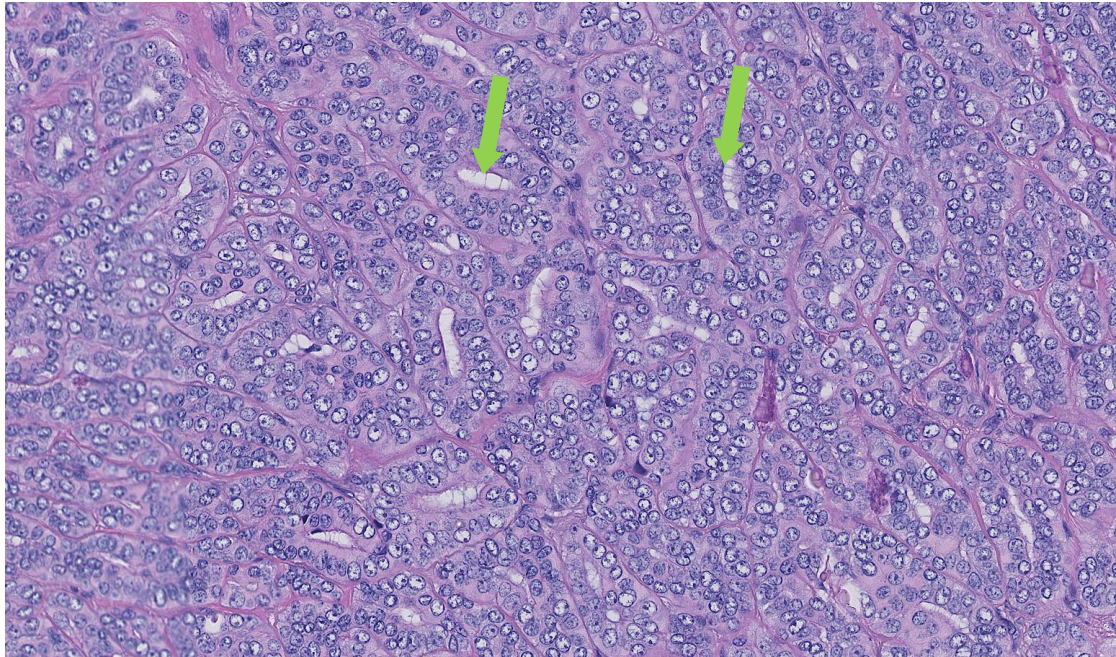


Fig. 4

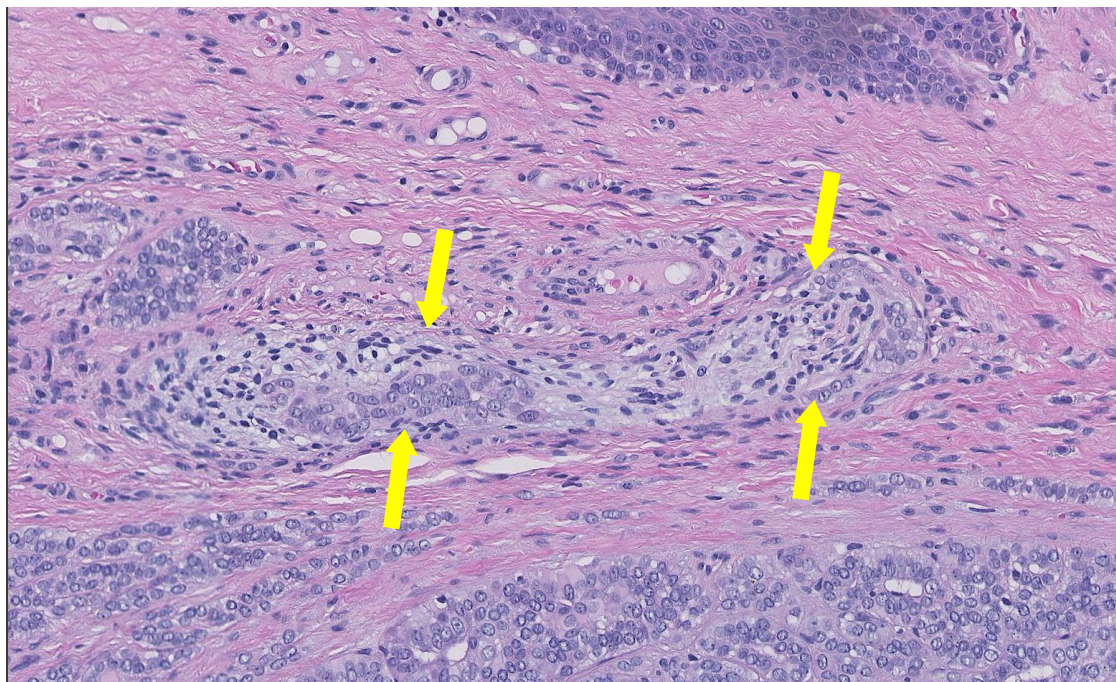


Fig. 5

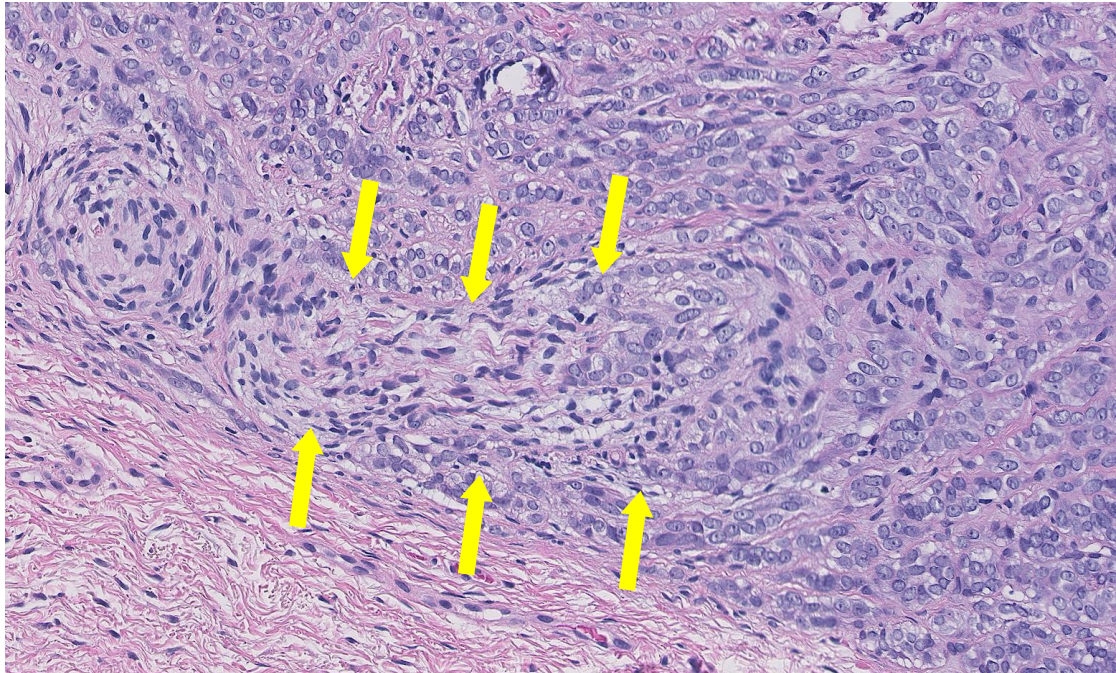


Fig. 6

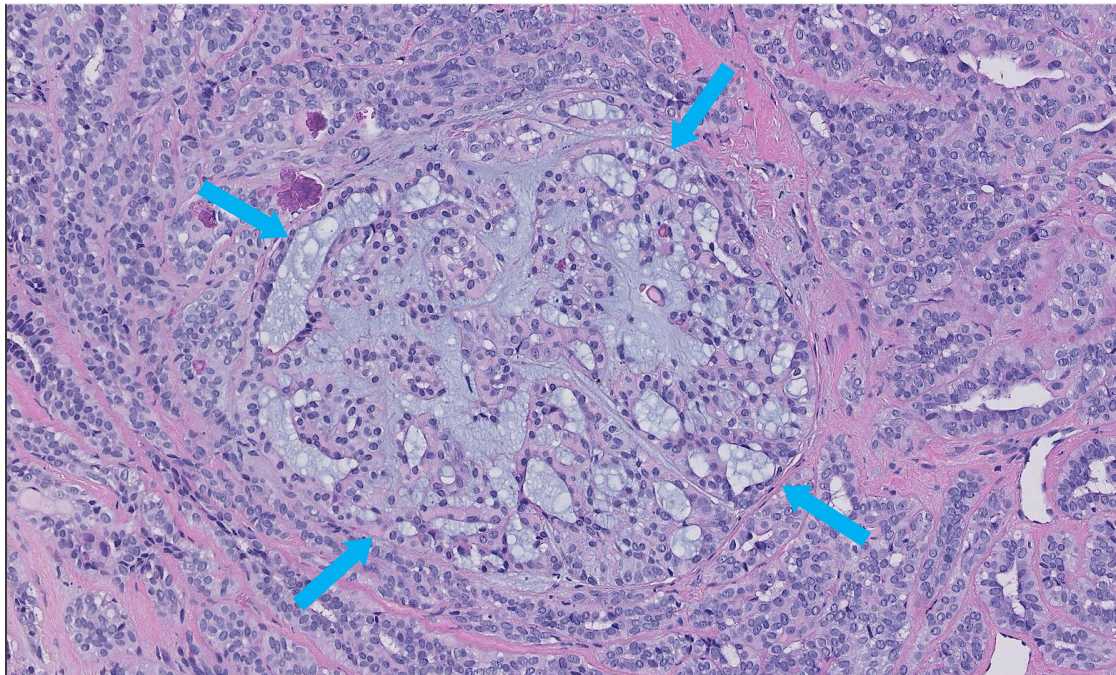


Fig. 7

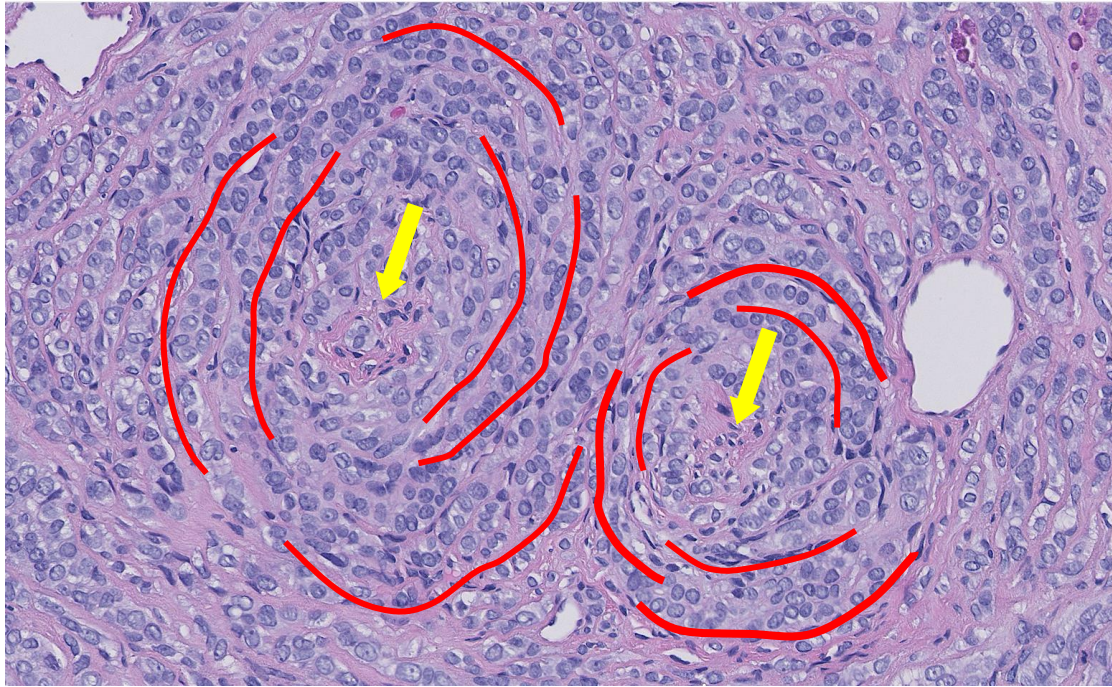


Fig. 8

