

NO. 060 Gorlin cyst with odontoma (type 1b)

<ul style="list-style-type: none"> ➤ Cyst 的三個要件：cystic wall、lumen / cavity、lining epithelium ➤ Lining epithelium 大多由 nonkeratinized stratified squamous epithelium (Fig. 1 blue ↑) 組成。也有部分有 ameloblastoma-like features (Fig. 3) ➤ 一樣有 ghost cell 及 osteodentin ➤ 不同的是，可見到 tubular dentin，毛狀部份是 enamel matrix 的部份 (odontoma：dentin + enamel matrix) ➤ 因為有 odontoma combined 一起，故本片為 Gorlin cyst type 1b 	<p>標記重點：</p> <ol style="list-style-type: none"> 1. Cyst 三要件：cystic wall (Fig. 1 green ↑)、lumen / cavity (Fig. 1 yellow ↑)、lining epithelium (Fig. 1 blue ↑) 2. Osteodentin (Fig. 1&2 black ↑) 3. Ghost cell (Fig. 1 red ↑) 4. Enamel matrix (Fig. 2 yellow ↑) 5. Dentin with dentinal tubule (Fig. 2 blue ↑) 6. 部分上皮的 basal cells 也可見到 ameloblastic features (Fig. 3 blue ↑)。
--	---

Fig. 1

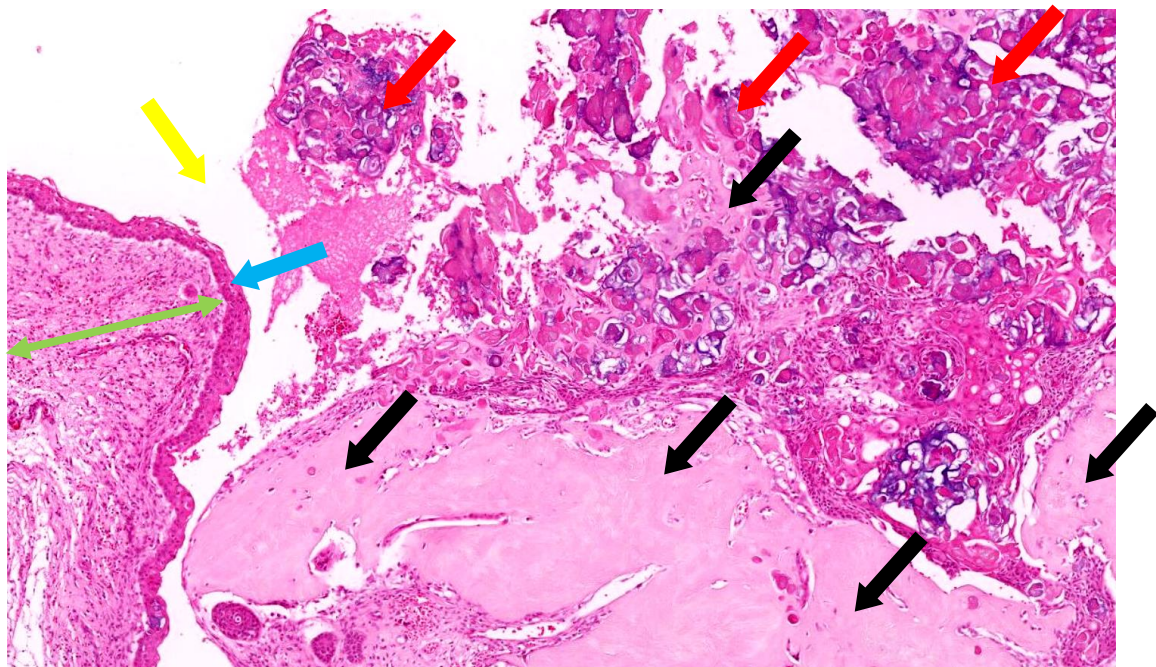


Fig. 2

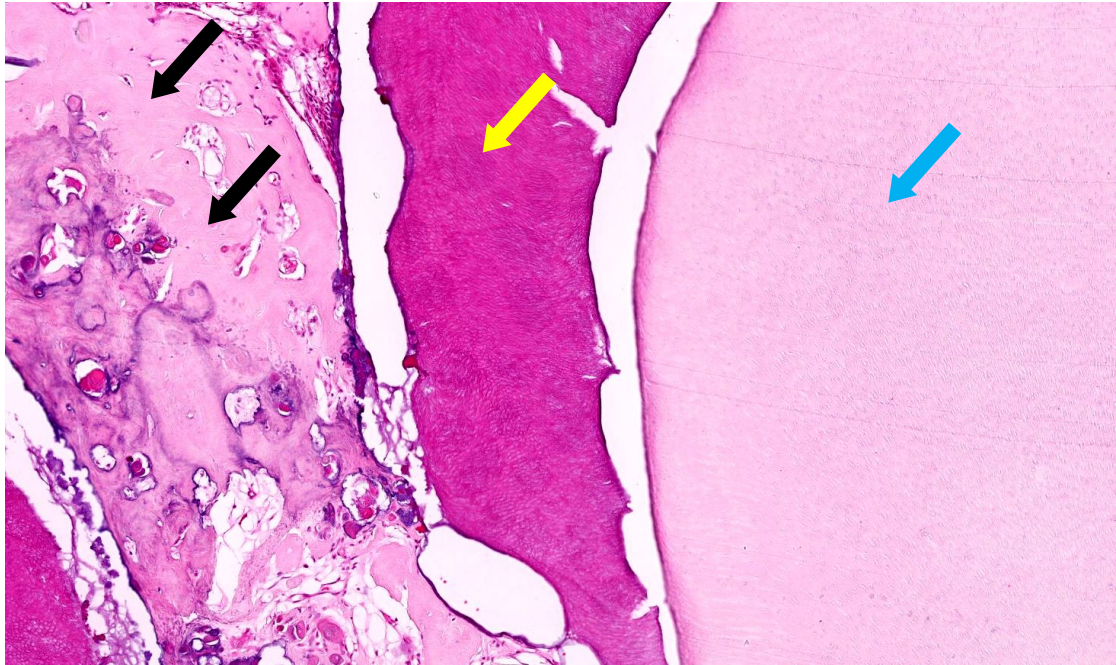


Fig. 3

