

## NO. 040 Cemento-ossifying fibroma

<ul style="list-style-type: none"> <li>➤ Tumor 含 cementum and/or bone 和 fibrous tissue 即稱 cemento-ossifying fibroma。</li> <li>➤ Immature fibrous tissue : fibrous tissue 為 immature 的，其 cellularity 高，細胞肥胖，但和 dental papilla 的 fibrous tissue 不大一樣，比較像 PDL 的 fibrous tissue。</li> <li>➤ Calcification : cementum or bone。             <ul style="list-style-type: none"> <li>■ bone 應有 lacunae 中有 osteocyte，常以 trabeculae 的形態出現。</li> <li>■ cementum 為深紫色。以 cementum 形狀來分，形態偏圓形也稱為 cementicle。這些 cementum-like spherules 週邊可見 brush border (像被毛刷刷過，與周圍的 fibrous tissue 融為一體)</li> </ul> </li> </ul>	<p>標記重點：</p> <ol style="list-style-type: none"> <li>1. Immature fibrous stroma (Fig. 2 green ★)</li> <li>2. Calcified materials:             <ul style="list-style-type: none"> <li>- Cementum (cementicle) (Fig. 1 blue ↑)</li> <li>- Bone trabeculae (Fig. 1 yellow ↑)</li> </ul> </li> <li>3. Brush border of cementum-like spherules (Fig. 2 red ↑)</li> </ol>
---	--

Fibrous tissue stroma 的比較		
Mature fibrous tissue	Immature fibrous tissue 似 dental papilla	Immature fibrous tissue 似 PDL
Ameloblastoma	Ameloblastic Fibroma Ameloblastic Fibro-odontoma	Cemento-ossifying fibroma Odontogenic fibroma

Fig. 1

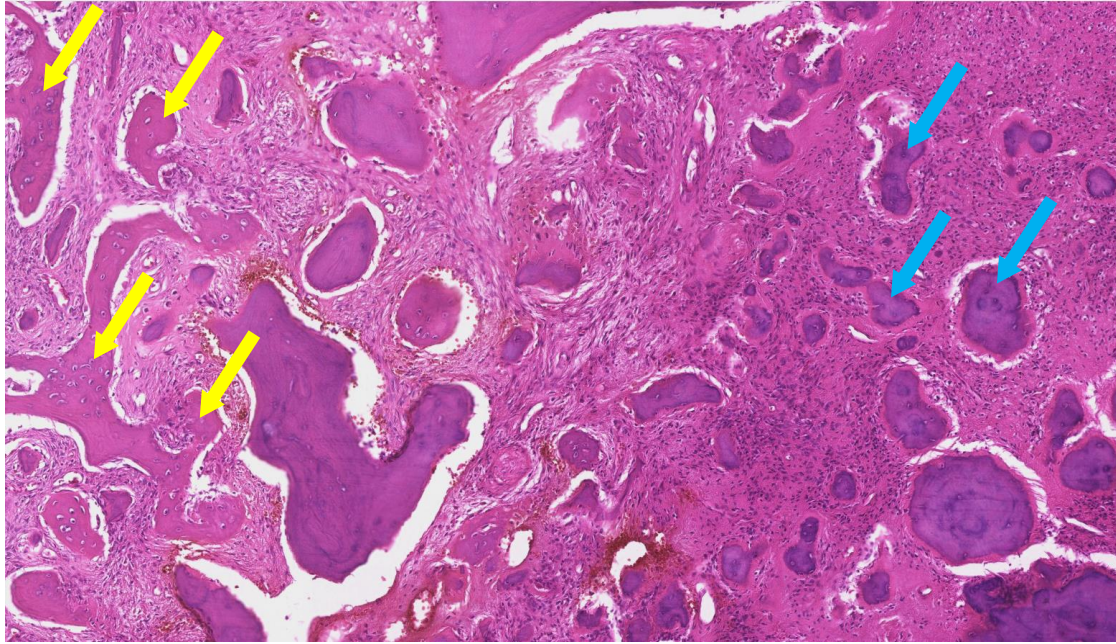


Fig. 2

