

## NO. 013 Lipoma

<ul style="list-style-type: none"><li>➤ 一整個 tumor mass 都由成熟脂肪細胞 (mature adipocytes)所構成。</li><li>➤ 這些腫瘤細胞大小都很一致(Fig. 1)。</li><li>➤ 成熟脂肪細胞的細胞核不明顯·通常會貼附在細胞周邊並呈現扁平貌(flattened)·甚至看不到細胞核 (Fig. 3 blue ↑)。</li><li>➤ 腫瘤中間會穿插一些中小型的血管(Fig. 2 green ↑)及纖細、不連續的纖維組織 (fibrous bands) (Fig. 2 red ↑)。</li></ul>	<p>標記重點：</p> <ol style="list-style-type: none"><li>1. 成熟之脂肪細胞</li><li>2. 扁平的細胞核 (Fig. 3 blue ↑)</li><li>3. 血管 (Fig. 2 green ↑)</li><li>4. Thin fibrous bands (Fig. 2 red ↑)</li></ol>
---	---

**Fig. 1**

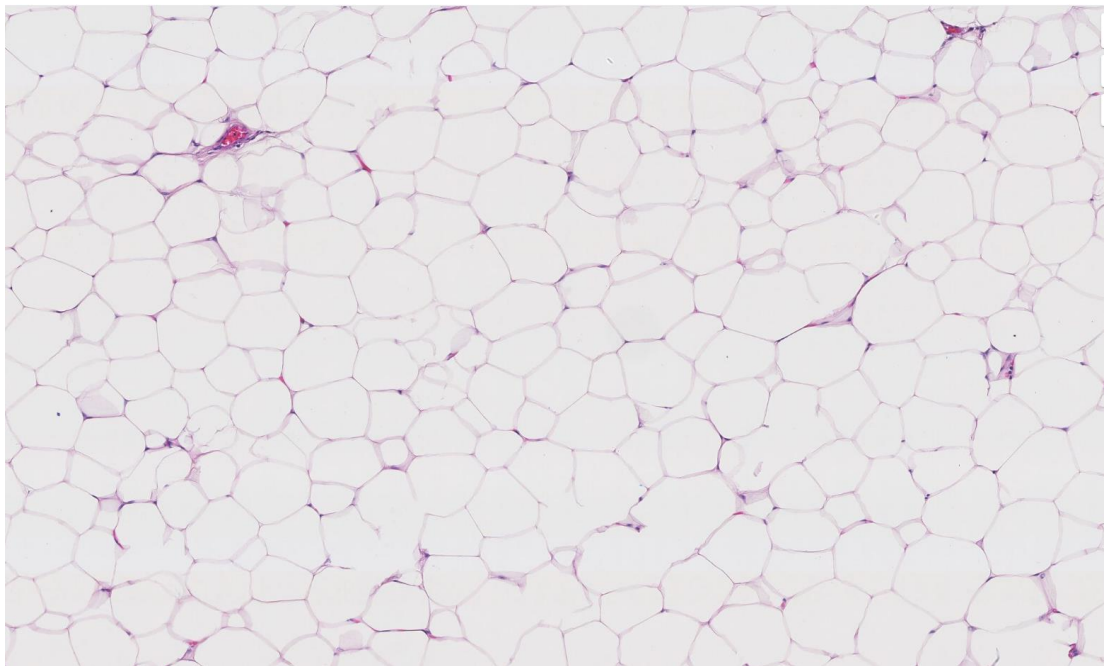


Fig. 2

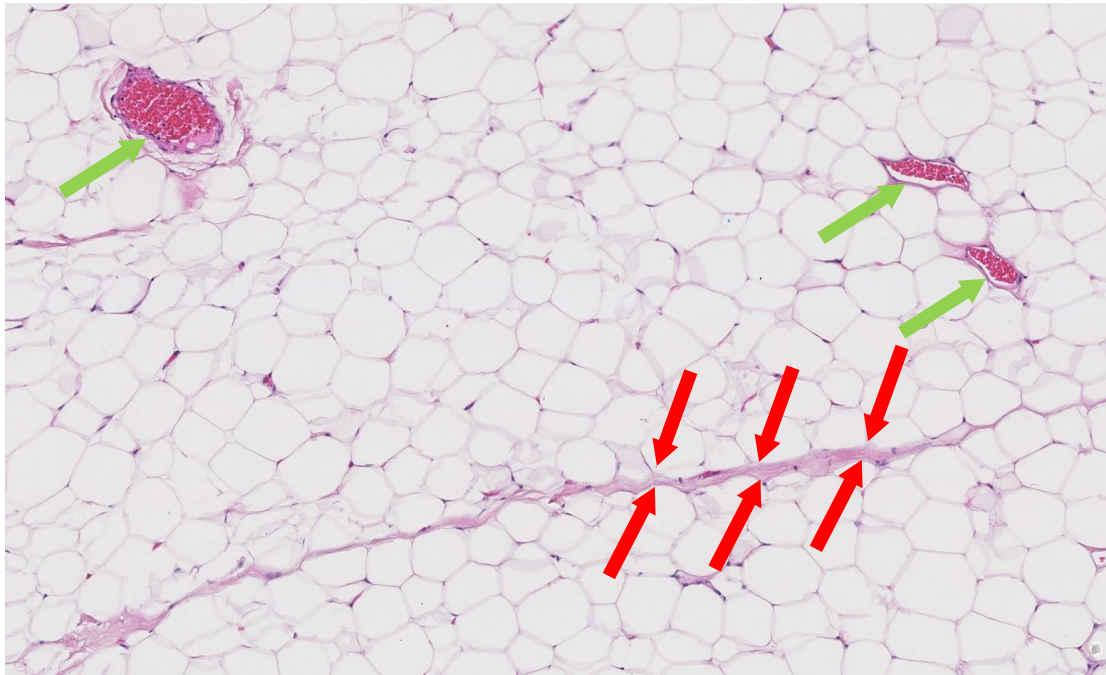


Fig. 3

